

Hambleton VALLEY

Group Magazine

*Hambleton
with Frieth
& Skirmett
Fawley
Findest
Medmenham
Turville*

Annual Subscription £16

For Payment please see inside front cover

£2.00
Jan 2023



The Hambleton Valley Group of Churches
"To see our lives and communities transformed by the love of God"



Cover: Cold Medmenham morning. This page: Snowy hedges, Colstrop Lane.

In This Issue

Group Letter	1
Group Notes and News	4
Wildlife	11
Hambleden	11
From the Registers	14
Calendar	15
Fawley	17
Frieth	18
Skirmett	21
Turville and Northend	22
Medmenham	23
Classified Advertisements	24
Church and Village Activities and Contacts	26

Weekday Services

Wednesday - 9.30am, Zoom

Daily Prayer - 10.15am, Holy

Communion, Turville

Emergencies:

If you are unable to contact the Group

Priests, please get in touch with your

churchwarden.

Annual Subscription £16: Please pay by bank transfer to the account 'Hambleden Valley Group of Churches Executive Committee'.

Account 70439002.

Sort Code 20-39-53.

As reference show your name and location. eg. WSmith/Hambleden

OR a cheque payable to Hambleden Valley Group of Churches Executive Committee or in cash and hand to your magazine distributor.

All contributions are welcome, to the Editor, Penny McLeish
hambledenvalleyeditor@gmail.com (please note change of email address)
3 Abbey Cottages, Ferry Lane,
Medmenham SL7 2HB
Telephone 01491 571288

Please keep articles within 350 words. Copy deadline is 15th of the month.

Printed by Higgs and Co., Henley.
Tel. 01491 419429

Dear Friends,



Happy New Year! It is certainly a new year. I do hope and pray it will be a happier one for us all.

Thank you to everyone who worked so hard to

make the Christmas services happen (at the time of writing everything took place as planned!) and for those who attended. We hope that you found some comfort and joy in the midst of the difficulty of the season.

As we turn towards a new year, I wonder what your hopes and plans are for 2023? It can sometimes feel dangerous to make plans in times of uncertainty. However, life can feel cold and hard if there is nothing to look forward to. We might not know what is coming next, but we can trust that God does. The prophet Jeremiah lived in very difficult times. Like all of God's prophets he had an unpopular message to deliver to people who did not want to listen. But in the midst of the uncertainty and pain, Jeremiah brought a message of hope and promise. Jeremiah 29:11 *'For I know the*

plans I have for you,' declares the Lord, 'plans to prosper you and not to harm you, plans to give you hope and a future.' It might feel like a big step to make plans and have hope for the future. Trust your plans to God. He knows!

Sue Morton has been busy making plans over the last few months for her sabbatical. We wish Sue and Mark safe travels and a time of refreshment. Sue will be off from mid-January until mid-April (returning after Easter). Please contact the Church Wardens or myself if you have any pastoral needs.

We are delighted to have Revd Andy Storch and Revd Peter Viney covering some Sunday services for us during this time.

The parishes of the Hambleden Valley are planning for various events this year too. We have a good number of weddings this spring and summer. There will be parties and services for the Coronation of King Charles III in May. Events well worth celebrating!

We may not know what the future holds, but we can know who holds the future.

New Year Blessings to all!

Revd Sue Lepp

HIGGS PRINTING & OFFICE SUPPLIES

Booklets • Brochures • Magazines • Leaflets • Business Cards • Letterheads
Banners • Posters • Pull up Banners

Design • Print • Copying • Office Supplies • Publishing

Publishers of the *Henley Standard*

Printers of the *Hambleden Valley Group Magazine*

Caxton House, 1 Station Road, Henley-on-Thames, Oxon RG9 1AD

T: 01491 419429 E: henley@higgsgroup.co.uk W: www.higgsprinting.co.uk



Opening Hours Monday - Sunday
 Breakfast: 8 - 10 am Lunch: 12 - 2.30pm Dinner: 6 - 9.30pm

The Stag & Huntsman
 at Hambleden
 Tel: 01491 571227
www.thestagandhuntsman.com



Hambleden Sports & Social Club

Hambleden Sports and Social Club is a community organisation providing sporting facilities on the Dene in Hambleden, as well as a Social Club in the village centre.

The current sporting sections are cricket, tennis, football and pool.

Take a look at our website at www.hambledenssc.co.uk for more information.



The **Social Club** is situated in the centre of Hambleden Village, to the left of the Post Office/Shop. The club is a members club which allows us to provide alcohol and soft drinks at low prices, for consumption by our members and their guests. The Social Club offers fruit machines, pool table, darts, TV, comfortable seating and a friendly atmosphere!

Membership:- £25 per year or £13 for OAPs and Students

Opening hours:- 8pm - 11pm (Tuesday – Saturday)

HIRE the Social Club for meetings during the day and functions in the evening

HIRE the Dene & Pavilion – funerals, weddings, christenings, meetings, events etc.

Please contact **Pat Eldridge 01491 576067** or email hambledenssc@gmail.com

We are lucky to have this facility in our wonderful valley, please do pop in and take a look for yourself!

BLOCKED EARS?

Lucinda is a qualified NHS audiologist with over 20 years experience. Now providing a home service for Earwax Removal. Let her visit you in your own home to help relieve the symptoms of blocked ears.

Full PPE equipment used to comply with recommended Covid safety measures.

07795 268866

Lucinda@hearingscreening.co.uk

facebook.com/blockedear

instagram.com/blocked_ear

HPCP registered. Registered NHS Audiologist. Professional indemnity insurance
Hearing Screening and Testing Limited. Registered in England No.07810066



LUCINDA
HEARING
SCREENING
& TESTING
ELLIS


OAKEN GROVE
VINEYARD



Open for tours & tastings,
drinks on the terrace,
Sunday jazz afternoons
and available to hire for
private events.

For full listings of our
events, to book tickets or to
purchase our wines, please
visit our website.

We look forward to welcoming
you to the vineyard soon!

oakengrovevineyard.co.uk
info@oakengrovevineyard.co.uk

**Benhams Lane, Fawley,
Henley-on-Thames RG9 6JG**

GROUP NOTES AND NEWS

Group Magazine

Dear distributors, subscribers and readers of the Hambleton Valley Group magazine, here we are looking forward to the New Year and all of us involved with producing the monthly publication take this opportunity to wish you a very happy and healthy year ahead.

Although print costs are rising you will see from the front cover of January's edition that we are holding the annual subscription price at £16. The monthly per copy cover charge will remain at £2. We continue to rely on our loyal and extensive range of advertisers who cover a significant share of the printing costs.

Annual Subscriptions: Wherever possible we ask that annual dues are paid by way of a **bank transfer** directly into the Group bank account and now the majority of subscriptions are paid in this way. It avoids handling cash and cheques which has proved especially helpful in an era of bank closures. We urge you again to please make magazine subscription payments in this way during 2023. The Hambleton Valley Group of Churches Executive Committee account is at Barclays Bank: Sort Code 20-39-53 and account number 70439002. When setting up the £16 transfer please show your name and village/location in the reference section. For example, Mr W H Smith of Hambleton would insert an abbreviated "WHSmith/Ham" in this section. Abbreviation may be necessary because there is only space for a maximum 18 characters. The subscriptions received as bank transfers in each month are notified to the distributors so they are aware of all relevant receipts. In practice the great majority of subscriptions come through during the first two months of the year which is much appreciated.

With our best wishes to you all.

Sue Lepp, Priest in Charge

Sue Morton, Associate Priest.

Penny McLeish, Editor

Stephen Sidders, Group Treasurer

David Napier - thank you!

Not all heroes wear capes! David Napier has been a solid and loyal hero of the Hambleton Valley for the last 25 years. He has served as a Church Warden in Fawley for a number of years along with being the Group Treasurer which also involved looking after the parish magazine of the Hambleton Valley Churches. We have been so fortunate to have his wise guidance, determination and gentle sense of humour to keep things moving. David's ability to get on with the job with minimal fuss is his super power!

David has also found his replacement for the Group Treasurer in Stephen Sidders. We warmly welcome Stephen to this role for which he is amply qualified.

Thank you, David for your faithful service to the Hambleton Valley. God bless you.

Welcome Stephen!

Revd Sue Lepp

Further to Sue Lepp's article above and on behalf of the Churchwardens of the Hambleton Valley I should like to add my appreciation of the work that David has done for the valley churches over the past 25 years.

I have known David since he became Churchwarden at Fawley and as Group Treasurer he has always given his best in keeping the finances of the Valley on an even keel by making sure we pay our Parish Share on time and getting value for money for the group magazine through his dealings with the printers and also the advertisers.

Thank you, David.

Brian Barnes

As David Napier retires as Group Treasurer of the Hambleton Valley Churches I have been reflecting with grateful thanks on his faithful commitment and dedication to this role over the last 25 years. Without wishing to embarrass David, I'd like to acknowledge his ability to quietly get on with things, often behind the scenes. His work is always completed in a well-organised way and without any fuss or bother, approaching people thoughtfully and kindly. And at the same time David has been

Continued on page 7

**Hambleden
Village Hall**

The perfect venue in the middle of the beautiful village of Hambleden.

Large hall, full kitchen facilities, patio, WiFi, hearing loop, parking.

Hire by the hour or by session.



For more details and prices contact Jamie Baker on 01491 410669 or email: enquiries@hambledenvillagehall.org visit www.hambledenvillagehall.org



**HAMBLEDEN VILLAGE STORES
& POST OFFICE**

**Local Artisan Produce - Freshly Ground Coffee & Teas
Filled Rolls & Toasties - Homemade Sausage Rolls
Organic Cakes - Fresh Bread & Pastries - Ice Creams
Seating Area - Post Office**



**That groovy little store!
All locally sourced and made with love!**

**Mon 8am-4pm
Tues-Sat 8am-5pm
Sun 8.30am-4pm**

58 The Village. Hambleden. info@hambledenvillagestores.com. 01491 571201

The Pedestal

Henley-on-Thames' auctioneers with world class expertise, local and international reach we offer a calendar of specialist and single owner auctions as well as our 24/7 online Shop

Inviting consignments for our forthcoming auctions of Fine Interiors and Design For Living



For a free auction valuation please contact:

Guy Savill or Sally Stratton MRICS on: +44 (0)1491 522733 or email: valuations@thepedestal.com

The Pedestal

The Dairy, Stonor Park, Henley-on-Thames, Oxfordshire RG9 6HF

www.thepedestal.com

juggling the role of church warden at Fawley for many years - much of that time as sole warden, arriving at services early to set up and staying late to tidy away – and has overseen the financial aspects of this Parish Magazine, including the advertisers and its distribution. I'm sure there are many more things too...!

David, as you step back from being Group Treasurer, I'd like to thank you for all you have done for all of us and for finding your successor in Stephen Sidders. We hold you both in our prayers in this time of transition.

May God bless you and Lizzie,

Sue Morton

Wild Church!



Wild Nativity

A loudly lowing cow with twin calves, sheep watched over by Spring the sheepdog (with angel wings), Wise Men on ponies, a Wild Choir in seasonal fancy dress, Mimi, Tiger and baby Elvis, (or in this context Mary, Joseph and baby Jesus) and a supporting cast of thousands, (well at least 60+ local people, 11 children and dogs, some in fancy dress) a strategically placed gazebo-styled stable, and not forgetting Mikey the Monkey (animated by Ellie). These were the ingredients for the Hambleden Valley Churches' Wild Nativity which took place on Northend Common, in front of the Turville Northend Village Hall, on Sunday 11th December 2022.



The Reverend Sue Morton related the traditional Christmas story through the eyes of Mikey and his quest to find the baby Jesus after seeing the mysterious star in the heavens. She was supported by readings from two of the young Kings (Lottie & Ollie Sturt) and carols and Christmas songs sung by the Wild Choir and local residents, who had been warming up at the Village Hall Christmas Party held just beforehand.

It was an enjoyable advent celebration which warmed the spirit on what was a very cold and frosty afternoon. Sue Morton extended her thanks to everybody who had contributed to the success of the event including the local residents who had brought along the animals. One year, Sue hopes to find a llama so that the shepherds hear the words: 'Fear not! Do not be a-llama-ed!

David Faragher



Wild Church coming up:

Wild Plough Sunday: 8th January at 3pm Hanger Farm, Fingest. Please bring a fold-up chair and a flask of tea/drink. There will be cake! Do look out for more details.

The Wild Church Team will then be on sabbatical and resume on Sunday 14th May 2023

At Wild Church we will sing a couple of well-known hymns, hear a Bible reading and simple prayer. As always do **dress for the weather**

-we will meet come rain or shine! **To find out more, please get in touch with one of the Wild Church Team: Mary Campbell grandma. marycampbell@googlemail.com; Mardi Wilkins mardi43@btinternet.com; Rev Sue Morton 01491 639286 or suemorton131@gmail.com

Sue Morton

Community Matters Update

Here is the monthly update for December from Community Matters in Lane End. Sue Morton

Because of the overwhelming compassion of the Hambleton Valley Churches, we have had a good opening to the Advent season.

Hambleton churches have donated food, household items, Christmas goods and very generous amounts of financial donations to our charity. We have 3 foodbank sessions in December and have already been able to distribute much needed support to families that are finding life very difficult and expensive beyond their means. We have bought some ASDA vouchers to give as Christmas gifts, helped families with utility bills and have used some of your financial donations to buy a tumble dryer for a family.

Thank you all very much for your continued and much needed support.

Much love and blessings to you,

Barbara and Lucy

On the Chilean Trail...



With routes, plans, destinations and church visits gradually coming together in readiness to begin the Chilean Trail, we are having a



last-minute revision of our flights. We will now be flying to Santiago via the Cayman Islands. Why? You may well ask! Our daughter, son-in-law and grandsons George (8) and Bertie (4) are going to live there for three years, so - having got out the atlas (or, more precisely, Google maps) - we realised that we could visit them en route, flying Miami – Cayman – Miami – Santiago. Do take a look at the flight plans above. We will go from walking barefoot in the sand on palm shaded beaches of Grand Cayman, to the capital city of Santiago, then fly north to the Atacama Desert, said to be the driest place on earth and the best place to see the night sky. Then we travel south to Valparaiso and on to Patagonia.

In preparation for - and as part of - a sabbatical it is helpful to have a question or heading to help our focus and reflection on our time away. After much prayer and consideration my question is: 'Does your church speak my language?' This question has come out of prayer and preparation for Wild Church as I have pondered on the language we have used in fields, woods and commons and as we have reflected on the beauty of God's creation which often needs no words, yet speaks to us in so many ways. The liturgy we use in church is equally important, both overlapping and diverging from the sacred spaces outside its walls.

I have been trying out the question 'Does your church speak my language?' and this has resulted in some interesting conversations. Some people have told me of church services that have powerfully touched them, even though they have not understood a word of what was being said. Others have appreciated

Continued on page 11



Your **local** experts

If you're thinking of selling your home, or require any advice on the current market in the Hambleton Valley, please get in touch. We'd love to help you.

Nick Warner
Office Head, Partner
nick.warner@knightfrank.com

Matt Davies
Partner
matt.davies@knightfrank.com

Jason Applebey
Associate
jason.applebey@knightfrank.com

Knight Frank Henley
20 Thameside
Henley-on-Thames RG9 2LJ
01491 818416
henley@knightfrank.com

knightfrank.co.uk



Your partners in property

Graham Blake soft furnishing

- Loose Covers • Curtains •
- Re-Upholstery • Tracks and Poles •

TEN YEAR GUARANTEE

For personal, helpful service, please call

Tel: 01844 261769 • Mob: 0780 1182 400

grahamblake123@btconnect.com

www.grahamblake.com

Midway Chimney Sweeps and Linings

Chimney Sweeping and Boiler Cleaning

Member of National Association of Chimney Sweeps

Recommended by Coal, S.F.A.S. and Gas Board

ESTABLISHED OVER 30 YEARS

TELEPHONE: HIGH WYCOMBE (01494) 564321

Mobile 07850 196616

G M PAGE FURNITURE RESTORATION

**ALL ASPECTS OF FURNITURE RESTORATION
UNDERTAKEN, BOTH ANTIQUE AND MODERN**

DINING TABLES REFINISHED
FRENCH POLISHING AND MODERN FINISHES
RE-UPHOLSTERY
CANE AND RUSH WORK
SPECIALIST VENEER REPAIRS
DESKS RE-LEATHERED

INSURANCE WORK UNDERTAKEN

TELEPHONE: 01494 511234
MOBILE: 07754533128
EMAIL: page1830@aol.com
WEBSITE: gmpagerestoration.co.uk



EST. 1988

the language of silence which transcends all words.

If you have any thoughts or experiences of: 'Does your church speak my language?' do get in touch. I'd love to hear from you! What language or languages do our churches speak here in the Hambleton Valley? Are there areas where we need to improve or change our vocabulary? And I will let you know how we get on as we visit churches which speak different languages on many different levels.

Thank you so much for your interest in my sabbatical and, above all, your prayers for us as we prepare to go on the Chilean Trail!

I will be on sabbatical from 17th January to 15th April

Sue Morton

WILDLIFE

In praise of Green Woodpeckers (*Picus viridis*)

These are the largest of our native woodpeckers and numbers are good although being secretive birds you would be forgiven for thinking otherwise. Their plumage consists of shades of olive green, a pale breast, a yellow rump, a black face and a red crown. The males sport a red moustache which is pretty much the only difference between the sexes. Their feet are zygodactylous, meaning two toes face forward and two toes face backward. These creatures are shy and skittish. I watch them through windows but outside, I only ever see their posteriors fleeing with their distinctive swooping flight and accompanying alarm call. Green woodpeckers are mainly ant eaters and benefit from a five-inch sticky tongue which lies coiled and poised around their brains within their skulls. Having disturbed an ant hill into a frenzy, this appendage enables them to lap up ants, their larvae and eggs by the score and is also exceptionally useful to extract all sorts of other delicacies from cracks and crevices. Brevis herba is where green woodpeckers are most visible on an ant nest raid. As the weather warms and wild flora grows, ant colonies rise simultaneously creating mini mogul runs. These anthills present easier access to the bounty but

both bird and the spectacle are hidden from view. In frozen conditions ants are hard to unearth, so berries, fallen apples, seeds, insects and beetles are also on the menu. Green woodpeckers pair for life but lead solitary lives after their young have fully fledged. The males excavate nest cavities in trees and these can take anything up to a month to complete and are usually in soft, rotting wood because their beaks are weaker than other woodpeckers. Nests are often used every year by the same pair and both sexes incubate the eggs of which there can be between five and seven laid in May. I have discovered the fully fledged young prefer not to drift too far from where they were born; information gleaned from ringing no doubt and I like it. Their weaker beaks hamper their ability to communicate by drumming so they don't, but instead re-establish their bond every Spring during a period of courtship and calls. Folklore suggests they call frequently if rain is imminent hence rain-bird or Oiseau de Pluie as the French have named them. John Aubrey in the 16th century suggested the birds were used for divination and I quote "to this day country folk do divine of raine by their cry". I am sticking with a weather app.

Sarah Ronan

HAMBLEDEN

Wreath laying on the Grave of Major George Howson

John Newbury from the Poppy Factory visited Pheasants Hill cemetery on 28th November to lay a wreath on the grave of George Howson on the anniversary of his death in 1936.

George Howson, who lived at The Hyde, founded the Royal British Legion Poppy factory after the First World War with five disabled servicemen. Major Howson was determined to do something to improve the prospects of the many former soldiers who had returned from the conflict with life-changing injuries.

By 1931 the factory was making nearly 30 million poppies a year. Over 300 men, women and children lived on the estate in rows of purpose-built flats, with a busy social club and regular sporting contests. In a few short years, they had laid the bedrock of a community that



still exists today.

Each year a representative from the Poppy factory lays a wreath on his grave, and this year a small group came together, led by Rev Sue Morton, to say prayers in his memory.

Sharon Howgego

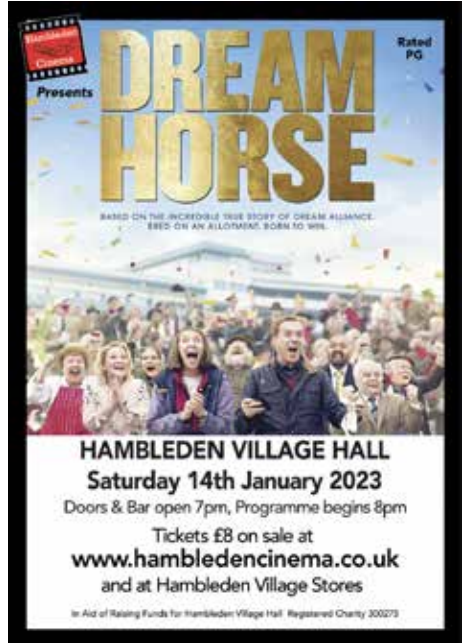
Hambleden Cinema

Come and join us on the 14th January 2023 with a cheery film, Dream Horse, rated PG, starring Toni Collette and Damien Lewis. Dream Alliance is an unlikely race horse bred by small-town Welsh bartender Jan Vokes. With no experience, Jan convinces her neighbours to chip in their meagre earnings to help raise Dream in the hopes he can compete with the racing elites, based on a true story.

Doors open 7pm, programme begins 8pm. Tickets £8 each can be bought from www.hambledencinema.co.uk and from Hambleden Village Stores.

There will be a bar selling soft drinks, wine, beer and tempting delicious cinema snacks! In aid of raising funds for Hambleden Village Hall Registered Charity 30027

Gwyneth Ashcroft



Charity Sale

Quality of Allsorts

Saturday 25th March
2.00 - 4.30pm
Hambleden Village Hall

Afternoon Teas Served Raffle

Entrance
50p

Funds to:

H.C.P.T
Life-Changing Pilgrimage Holidays
for Children & Adults

www.hcpt.org.uk
Charity no:281074

Continued on page 17

Absolutely Fabulous

CARPET, RUGS, UPHOLSTERY & STONE FLOOR CLEANING

EXTENDING THE LIFE OF YOUR CARPETS, RUGS, UPHOLSTERY & STONE FLOORS

The most thorough cleaning you've ever seen... or it's FREE.

For Absolutely Fabulous cleaning of your carpets, upholstery, rugs or stone floors, give us a call today **01491 540005**



We have our own dedicated rug wash facility
Free collection and delivery of all rugs.



All floor tiles and grout cleaned, full restoration of
all natural stone floors (incl. marble floor polishing).



"Excellent time keeping, very courteous, excellent workmanship" ★★★★★

"Honest, friendly, efficient and reliable" ★★★★★

"Thorough, prompt, friendly, knowledgeable" ★★★★★

"I would definitely recommend this company to all my friends and family." ★★★★★

www.abfab.uk.com

Henley based plumbing, heating and bathroom specialist



**ALLHEAT
SOLUTIONS**

07596 018344

PAUL@ALLHEATSOLUTIONS.COM



FOLLOW US



**Oil Boiler Servicing,
Breakdown & Repair.**



Oil Boiler Installations.



**Bathroom Design &
Installation Service.**



Full Tiling Service.



**General Plumbing
Maintenance & Repair.**



**Heating System Power
Flushing.**



**Underfloor Heating
Installation & Repair.**



SCAN ME

Church Services and Events

www.hamleden-valley-churches.org.uk

From The Registers

Holy Baptism

Nov 27	Remy Bertrand	Hamleden
Nov 27	Amber and Kenny Dunne	Hamleden

Rest in Peace

Dec 5	Stanley and Nancy Baldwin, and their son Dr Ian Baldwin	Burial of ashes, Frieth
Dec 16	Rex and Beryl Cadwaldr	Burial of ashes, Turville
Dec 17	James Horner	Burial of ashes, Medmenham
Dec 19	Anthony Ainslie	Funeral and Burial, Pheasants Hill
Dec 19	Wendy Towers	Burial of ashes, Turville



Hamleden Valley Prayer Group

We have formed a contemplative listening and confidential prayer group, forming a circle round the valley with God at the centre. If you would like prayer please send a request to the email below:

hamledenvalleyprayergroup@gmail.com

Telephone
01491 574644



Established
1906

FAMILY RUN INDEPENDENT MEMORIAL MASONS

36 READING ROAD, HENLEY ON THAMES, RG9 1AG
www.etsheppard.co.uk info@etsheppard.co.uk
Private Car Parking

CALENDAR FOR JANUARY 2023

Sunday Services

Pattern of Worship January 2023

Please see below for Sunday services. There will also be Zoom services at 9:30am and the 10.15am midweek Holy Communion at Turville on Wednesdays and 12noon Prayers at Fawley on Fridays. Currently, the calendar is subject to change so please check our website www.hambleden-valley-churches.org.uk for latest updates or contact our administrator Jenny on 07769 599616 – hambledenvalleyoffice@gmail.com with any query

www.hambleden-valley-churches.org.uk

	Fawley	Fingest	Frieth	Hambleden	Medmenham	Turville	Zoom
1st Jan 2023					10am Group Service		
8th Jan	11am Holy Communion	9am Holy Communion 3pm Wild Church, Hanger Farm		11am Holy Communion			
15th Jan			9am Holy Communion/Zoom	8am BCP Holy Communion 10am Lay-led Morning Worship	11am Holy Communion		9am
22nd Jan	11am Holy Communion	6pm Evensong	9am Holy Communion/Zoom	11am Holy Communion		9.30am Holy Communion	9am
29th Jan		6pm Candlemas Evensong	8am, BCP Holy Communion				
5th Feb				10am Group Service			

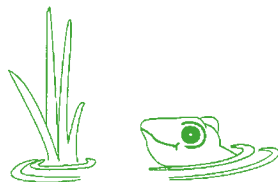
The Frog at Skirmett, Henley-on-Thames

(Closed Sunday Evening — November to May)

Non-smoking Restaurant with an unusual selection of New English, French and Mediterranean style food.

Food is served for LUNCH and DINNER 7 days a week, May to November

Family room for children. En-suite accommodation. 36 seat function room



Tel: 01491 638996 Fax: 01491 638045

Gerrards Cross
38 Oak End Way
Tel: 01753 891892

Slough
273 Farnham Road
Tel: 01753 535556

High Wycombe
891 London Road
Tel: 01494 472572

Marlow
21 -23 Little Marlow Road
Tel: 01628 898866

Beaconsfield
32 Gregories Road
Tel: 01494 685000

www.arnold-funerals.co.uk

Traditional, Alternative & Green Funerals
Pre -Payment Plans ~ Stonemasonry ~ Floristry



6 Generations of Service in the Community
24 Hour Service

ARNOLD FUNERAL SERVICE INDEPENDENT FAMILY FUNERAL DIRECTORS



COAT & TAILS

All breeds of Dogs and Cats • Long Coats a speciality
Collection or home service by arrangement

MAIDENHEAD-MARLOW-HENLEY
PROFESSIONAL & CARING
With 35 Years' Experience
Clipping/Hand Stripping

Rotten Row Farm • Hambleden
Henley-on-Thames • Oxon
Tel: 01491 636140

www.coatandtails-Hambleden.co.uk

Whatever you want to store...

...for whatever reason - house sale and purchase not coinciding, travelling, house building work, paperwork overload or even "de-cluttering" to sell your house more quickly - we offer a friendly and flexible local service.

With competitive rates, secure storage and hassle free 24/7 access, contact us now!



01189 404163 www.barn-store.co.uk

FAWLEY

Railway Nativity



This year's Christmas celebrations kicked off in Fawley, thanks to Judy McAlpine, with the annual Nativity held at Fawley Hill Station. The usual chaos ensued as the village children and their families gathered for what must be one of the most magical moments in the local calendar. It began with the Angel Gabriel, arriving by steam train (!) to inform Mary, seated under the arches on bales of hay with her trusty Bernese Mountain dogs, that she was to have a baby. Mary understandably questions this news on the basis of her marital status.



Before long, Sue Lepp as narrator (ably ad-libbing with aplomb) is announcing the late running train from Nazareth is due into Bethlehem where the Imperial Registration will allow the collection of taxes. Joseph being a poor carpenter cannot afford the train fare so he brings Mary on, not a donkey but, a pony - despite the risk assessment. Interspersed by mulled wine fuelled Carol singing along the platforms Mary and Joseph visit three Inns looking, to no avail, for accommodation. Mary was tired, Joseph was chastised for not booking ahead online and then a stable is offered and gratefully received. As the crowds watch on and sing a few verses of Silent Night a REAL baby Tate joins Mary on stage for his acting debut, age 5 months!

Gabriel announces the birth of Jesus and a flock of angels and shepherds, who have been patiently waiting for their moment under the spotlight, scurry to join the tableau. At which point, it's time for another train. This time carrying three Wise Men, and as they argue amongst themselves as to which gift is the most valuable the scene is set and Fawley breaks into song.

I have no doubt that this year's cast will look back in years to come and consider the

FRIETH

Fawley Hill Nativity one of the most bonkers, eccentric and magical moments in their childhood.

Sarah Snow

FRIETH

Frieth School

We had a very festive Saturday full of merriment a few weeks back at our Christmas Fair. A huge thank you goes out to our PTA for raising a large sum of money for the school which will be used to enrich the children's education. Needless to say, an extra special thanks also goes to Father Christmas and his elves for taking the time out of their busy schedule to visit Frieth! The pinnacle of the day was the eagerly awaited XMAS Factor, where we witnessed some amazing performances. However, in the end, there could only be one winner...congratulations therefore to our worthy winners Eliza Rigden and Clara Knight for letting their light shine with their spectacular singing and dancing!

The netball team continue to let their light shine in their 6-1 win against Bledlow Ridge and 13-2 win over Monks Risborough. All the practice is clearly paying and the team are looking forward defending the High Wycombe District Cup after Christmas when league matches start. A special well done award must be given to Ava Cruise who notched up an amazing 8 goals!

It also gave me great pleasure to learn that last year's netball captain, Bonnie Hodsdon, has been scouted for a professional team. Bonnie started her netball journey last year at Frieth, which just goes to show how important it is



that we provide these sporting opportunities. Not everyone will go on to be superstars, but if the children find something they enjoy, then hopefully they will go on to reap the numerous benefits that sport brings.



Continued on page 21



Skirmett Village Hall

A bright lovely hall with fully equipped kitchen in the Hambleton Valley available for meetings, workshops classes and parties. Website: Skirmettvillagehall.org. For bookings Contact Mandy Heller 01491638355



J & D Mooney

In Association with Henley Chic Decor

YOUR "CLEAN" RELIABLE QUALITY PAINTERS & DECORATORS DOMESTIC & COMMERCIAL

Family run business for over 30 years!
Summer bookings being taken



- NVQ qualified
- Many references available in and around Henley
- No job too small!
- Interior & exterior work done!
- Free competitive quotes! No obligation
- Prompt and friendly service!
- C.I.S registered business
- Full public liability insurance
- Specialist in rural run down property

T:01189 9344230 M:07961 366535

darrenjomooney@hotmail.com henleyschicdecor.com



Over 150 years of River and Boating Service

- Luxury Passenger Boat Charter
- Self Drive Adventure
- Luxury Boating Holidays
- River Trips
- Moorings and Storage
- Edwardian Chauffeured Launches



For bookings and enquiries
please contact Hobbs of Henley
on 01491 572035
or boats@hobbsofhenley.co.uk





Danesfield Gardens

Henley Road, Medmenham, Near Marlow, SL7 2EU

Your local nursery for bedding and patio plants for spring and autumn
Baskets filled, compost, chimney pots and ornaments

Phone: 01628 484509

Betty Ryan
and Isabel McCrindle




Denning Montessori Nursery and Forest School - Fawley
www.DenningMontessoriSchool.com - Tel: Jenny 07982 620710

T&S

Tomalin & Son

A Family Run Independent Funeral Service

24 hours service | Private client parking | Private chapel of rest
 Free home visits | Pre-paid funeral plans | Full written estimate



Tel: (01491) 573370

www.tomalins.co.uk office@tomalins.co.uk
 Anderson House, 38 Reading Road, Henley-On-Thames, RG9 1AG




W. J. Webb & Son Ltd.

(Established 1968)

BUILDERS and DECORATORS

CONVERSIONS and GENERAL REPAIRS

Hambleden, Henley-on-Thames

Tel: 01491 571366

e-mail: wjwebbandson@googlemail.com

A huge well done to some of our choir members who had the opportunity to perform at Christmas in the Park. The children sang their hearts out and sounded amazing. Next stop Wembley Arena where the full choir will be performing at Young Voices.



Let me introduce you to our Eco Council and Energy Squad. Saving the planet is high on the priority list at Frieth and these children will be working hard to ensure we are environmentally friendly and energy efficient. Lots of opportunities available as we will be tying in with our forest school and making links with the local community.

Martin Gosling,
Headteacher

SKIRMETT All Saints

A “chapel of ease” is not somewhere to nap during the sermon but “a chapel for the convenience of parishioners who live at a distance from the Parish Church”. Skirmett’s was tiny and, by 1886, no longer *Fit For Purpose* (it became the school and, later, part of *Ramblers*) so HW Cripps donated



land and locals raised £700 to build All Saints. The architect was Alfred Marden M o w b r a y , pupil of Gothic Revival masters C. Buckeridge and G. E. Street, designer of the

Royal Courts of Justice.

Don and Mary Poppy bought *All Saints* in 1979, three years after decommissioning. Excavations failed to find the font and altar buried in the garden! The original conversion added the two huge windows. Don designed a garden room and an open walkway, “The Cloister”, in the same Gothic style, receiving rare praise in the Skirmett Conservation Area Character Survey.

Don worked as a Civil Engineer all over the world: in Ethiopia drilling for Geothermal Energy for a French charity; in Abu Dhabi constructing roads, bridges, shopping centres and more. When only 31 he began re-building Addenbrooke’s Hospital, which took seven years.

Mary was a school nurse at Highdown Comprehensive in Caversham and Meadway in Tilehurst. She was named “The Nit Nurse” for her scrupulous elimination protocols. Later she loved driving her half-timbered white Mini Traveller to do hearing tests in village schools.

They lived at *All Saints* happily for 40 years and were *crucial* to the social life of Skirmett. Mary chaired the Village Hall Committee and



TURVILLE AND NORTHEND

walked the footpaths to keep them open, touching up faded signs with a paintbrush.

Don bought part of Goddards Wood and planted native rowan, field maple, holm oak and spindleberry. He was a skilled draughtsman whose journals faithfully record the wildlife he observed. After Mary died, he continued to host the village at *All Saints* and managed a shoot in the wood for local friends. When he held a hog roast in his field it poured with rain and a barrel of beer was drunk!

In his last years, on a good day he would take his dear black Labrador Bella for a walk in Goddards wood.

Deborah Poppy and Caroline Davis

TURVILLE AND NORTHEND

Christmas Wreath Workshop

Following the success of last year, Juliet Bennett from Babylon Flowers returned to

host the Christmas Wreath making workshop.

On a very cold day in December the village hall was full of lovely foliage and dried flowers in pinks, gold and orange. This year we were provided with ready prepared mossed circles so we could focus on our elaborate decorations. We chose green foliage of many different types sourced from Juliet's nursery and the local area. Once the base was on it was time to choose our dried flowers from the vast selection available. Juliet and Eddie helped us wire up the more fragile stems and gave us experienced guidance on what might work well together whilst leaving us with the selection and creative decisions. All of our bases started off looking the same but our final creations were vastly different and all of them absolutely beautiful.

We will be proudly displaying our wreaths on our doors over the festive period. After 2 successful years of this popular workshop, we hope Juliet and Eddie will host us again in



Healthy Ovens
HEALTHY, HAPPY OVENS IN A JIFFY
www.healthyovens.co.uk

Professional Oven Cleaning Services
A CLEAN OVEN IS A HAPPY OVEN!

Healthy, Happy Ovens In A Jiffy
Get Your Oven Cleaned TODAY!

☎ **01491 714012**

✉ **info@healthyovens.co.uk**

2023 in the Village Hall.

Left: Juliet from Babylon Flowers and some of our wonderful creations

Clare Barrows

MEDMENHAM

Article 6 - in the 30s



The 1930s were the proverbial curate's egg for the Guttridge family. Good in parts. The older children had married and left home, Bob, Joe and Hilda in the 1920s, Tom in 1932. The remainder were still at home, although all except Arthur would marry and fly the nest as war clouds gathered in the late 1930s

Arthur, like his brothers, passed for grammar school. But unlike them, and because of a changing education system, he was able to take up a place at Borlase school in nearby Marlow. And the sons of the approachable Westons, by then at Wittington House, were class mates and friends. Changing times indeed.

The Bendirs remained at the Abbey. They built a swimming pool and tennis courts roughly where the water research buildings would later be. The Abbey gardens were



probably at their peak in this period.

Dad left the Abbey in 1936 to take charge of the glass houses at Cliveden, but returned frequently in the years before his marriage.

Harry continued the ferry service, mostly by then in the dinghy.

In Medmenham the floods were a continuing problem, particularly at Abbey Cottages. 1937 was particularly bad and photos show planked walkways in place down ferry lane.

By then Emily's health was poor. Following an incident on the weekly shopping bus to Henley, she suffered greatly from ulcerated legs.

Her death in 1938 was a hard blow to Harry. He could not bring himself to return to the church where he had buried his wife the previous year when my parents were married at Medmenham on June 3rd 1939. To make things worse, he also lost his mother, too, in 1938.

Before she died, Emily had promised former neighbour, Mrs Potter, that she would look after her husband William after her death. She was as good as her word. William Potter was still living with the family in the 1939 census, and was, unlike Harry, present in dad and mum's wedding photo. At the Abbey, Jack Roberts had replaced Mr Clarke as head gardener. But in the village, Charlotte Sartin, Harry's step cousin once removed, remained as village postmistress into the war years, by then well into her 70s.

As war loomed, some of the older children returned to Medmenham. Both Ron and Tom were living there, with their wives, as the 1939 census was taken.

Joe Guttridge

ADVERTISEMENTS

Corfu — comfortable sea-edge villa in Durrell country to let privately. Between Kassiope and St Stefanos. Direct BA flights from LHR Ter.5. www.corfubeachhouse.co.uk Armstrong 01491 571324

North Cornwall, Harlyn Bay Padstow 4 miles. Family cottage with garden. Sleeps 6. Quiet lane with footpath leading to huge sandy beach. Excellent surfing, walking, golf. Very reasonable rents. Beck- Burridge 01491 413171.

Computer Problems?

Local help in fixing problems, selecting systems and personal tuition including email/ internet. Contact Matt on 01491 575998 or 07821 592928.

Mulberry Flooring.

Specialists in wood floor restoration. Please call for free quote 01494 535348.

Rock, North Cornwall. Old cottage by the beach, newly refurbished, sleeps 8. Available for holiday lets. Contact Mandy Heller on 01491 638355 or johnheller@poyhattscottage.com

Salcombe, South Devon. Three bedroom cottage, recent refurb, stunning estuary views, quiet &

close to town centre, sleeps six, easy access beaches/walks, holiday lets throughout year, 01491 577344

The Pet Feeders - We look after your pets when you can't. Local firm, insured/CRB checked. www.thepetfeeders.com. Mobile: 0753 100 7419. Email: info@thepetfeeders.com

Valencia Large Luxury Family Villa with Pool and Tennis Court. 15 mins from the City Centre, 10 mins from the Airport. Sleeps 14 comfortably, 6 bedrooms / 4 bathrooms. Visit www.homeaway.co.uk/p1029900 to see our reviews. Contact Virginia or Andy Coombes for more information on 01491639419/ 07860847256

Snowdonian Cottage. Cosy and comfortable traditional 3 bed stone cottages sleeps 6, wood burner and wi-fi, in coastal village, Llwyngwrl in the Welsh Coastal Path. An ideal base to enjoy and explore 'the most dramatic and alluring region in Wales'. Beaches, mountains, River Mawdach and Dyfi Estuaries, lakes and so much more. Dog Friendly. Contact Euan McCrindle 07713 952495 / 01628 475644 or email euanmccrindle@hotmail.com for more information and detail.

Music Teacher! - Qualified musician offering great value

Piano and Vocal lessons. 5 Years Experience, Fun and engaging lessons for all ages and abilities. Contact Sasha Steventon (BMus) on 07740 289467 or bluemusic@outlook.com www.bluemusic.co.uk

Isle of Mull. The Bothy sleeps 4, available for weekly holiday lets, and The Studio sleeps 2, available for 2-5 nights. An ideal peaceful location for exploring this beautiful island. Wonderful panoramic views, walks, beaches, wildlife. Visit www.thesmithymull.co.uk for more information.

Dairy Lane Dog Grooming Hand-stripping, Clipping, Scissoring, Bathing, Nails. Louise McTeague, 4 Dairy Lane, Hambleden, Henley-on-Thames, Oxon RG9 3AS Tel 01491 579442 Member of British Dog Groomers Association and Pet Care Trust

Snowdonia National Park Elegant Welsh stone house in Dolgellau available to rent for weekends, short breaks as well as full weeks. Ideally situated for walking, cycling and the beach. Sleeps six, three bedrooms, pet friendly. Go to www.dioni.co.uk/cottage/ty-gobaith for details or contact charlottedigby4@gmail.com 07771 576856 for further information and to book.



Turville Northend Village Hall

Large Hall, Committee Room, Kitchen, Private Terrace, Parking.
Available for: Meetings, Workshops, Parties, Weddings, Classes.

For further information & bookings visit: www.thevillagehall.co.uk
Turville Northend Village Hall, Northend, Henley-on-Thames, Oxfordshire RG9 6LJ

Protecting your wealth and loved ones

- Everyone should have a Will, but 2 out of 3 people have not yet made one, and those that **have may not have the correct Will** in place.
- If you own a business or a share of a business, your spouse/partner and children may not necessarily inherit your share.
- An estimated 70,000 people per year have to sell their homes to **pay for care**.
- Effective planning can also protect the **inheritance of future generations** from **divorce or separation** settlements.
- By setting up **lasting powers of attorney** you can rest assured that your finances and personal welfare are in safe hands.

In association with Countrywide Tax & Trust Corporation Limited, I provide a professional, tailor-made service to help individuals to safeguard assets, regardless of their value and protect their loved ones.

My decision to get involved in Wills and Estate Planning was a result of personal experience. I learnt first-hand how unpreparedness adds to the stress of dealing with long-term illness and death. Get in touch for advice that can guide you to make informed decisions that suit your needs.

Visit www.personalestateplanning.co.uk for further information.

Judy Bonfanti, FCCA, STEP Affiliate

judy.bonfanti@hotmail.com

0781 0642 505



Are you getting over an operation?

Do you struggle with your mobility or balance?

Are you getting stiffer and losing flexibility?

Or just worried about aches and pains?



The physios at Physiologic are experts in both pain and movement.

They will find out why you are in pain or not moving well, help address this as quickly as possible and get you moving and doing what you love again.

We are open 7 days a week with free parking at the Henley Rugby Club.

Call 01491 598043 or book online at physiologic.co.uk
Dry Leas Sports Ground, Marlow Road, Henley, Oxfordshire, RG9 2JA

CHURCH AND VILLAGE ACTIVITIES AND CONTACTS

Hambleton Valley Group of Churches

Priest-in-Charge: The Revd. Sue Lepp,
07930 520562, revdsuelepp@gmail.com

Associate Priest: The Revd Sue Morton,
01491 639286, suemorton131@gmail.com

Director of Music and Choir:

Christine Wells BEM, 01491 571588,
c@wells.vnworks.net

Group Treasurer: Stephen Sidders,
01491 639271 stephensidders@sky.com

Group Administrator: Jenny Neagle,
07769 599616,
hambledenvalleyoffice@gmail.com

Weddings and Blessings: Jenny Neagle,
07769 599616,
hambledenvalleyoffice@gmail.com

Tea Club: St. Katharine's, Parmoor,
Currently suspended

Barney's Toddler Group: Frieth Village Hall,
Currently suspended

Website:
www.hambleton-valley-churches.org.uk

Fawley (St Mary the Virgin)

Churchwarden: David Napier,
01491 574230,
david_napier@btopenworld.com

**Clerk to Fawley Parish Meeting and
Village Hall booking:**
David Burton - davidburtn83@hotmail.co.uk

Fingest (St Bartholomew)

Churchwardens:
Brian Barnes, 01494 882613,
brianbarnes346@gmail.com

Jill Dean, 01491 638678,
jill@sundawn.uk.com

Frieth (St John the Evangelist)

Churchwarden: Judy Hunt, 01494 882227,
ajh.claypit1@btinternet.com

Village Hall Bookings:
website www.friethvillagehall.org
email friethvillagehall@gmail.com
Tel 01494 880737

Frieth Natural History Society:
Alan Gudge, 01494 881464

Frieth Village Society: Caroline Walker
01494 882333

Frieth Cricket Club:
Ben Smiley
friethcricket@btinternet.com

Frieth Lunch Club: meets on last
Friday of the month at the Yew Tree Pub.
Judy Hunt, 01494 882227
ajh.claypit1@btinternet.com

Pilates: Mondays at 2pm - 3pm. Wednesdays
at 2pm - 3pm. Lauren Owen
www.pilat-ease.co.uk

Hambleton (St Mary the Virgin)

Churchwarden:
Jill Steward 01491 571320
jillsteward@hambleton.com

Deputy Churchwarden:
Sharon Smith 01628 487458 sharon-
smith0505@btinternet.com

Bell Ringing: Fri 7.45pm practice, Helen or
Karen, hambletonbells@mycomputer.email

Village Hall Bookings: Jamie Baker,
01491 410669, www.hambletonvillagehall.org

Pilates: Mondays 11 – 12 Fran Presho,
07951 019594

Bridge Club: Fridays 1.30 – 4.30
Frances Cugnoni, 01491 576409

Hambleton Social and Sports Club: Open
daily from 8 pm Pat Eldridge,
01491 576067

Tennis Club: Heather Symons,
01491 577344, heathersymons16@hotmail.com

Tennis Coaching: Chris Marshall,
07801 999230, chrismarshall20@hotmail.com

Indoor Market: Hambleton, 2nd Saturday in
Month (except January)

Medmenham (St Peter and St Paul)

Churchwarden:

Vacant. Please contact Rev. Sue Lepp, 07930 520562, revsuelepp@gmail.com

Village Hall Bookings: Emma Tentori, 07759 014396

Uniformed organisations:

1st Danesfield Scouts, Cubs and

Beavers: leader Nick Currie, enquiries@danefieldscouts.org.uk

Medmenham News:

medmenhamnews@icloud.com

Skirmett

Village Hall Bookings: Mandy Heller, 01491 638355 www.skirmettvillagehall.org

Tai Chi: Friday 9.30am - 10.30am.

Contact: junekingsburytaichi@gmail.com

Hambleden Valley Garden Club: Meetings

Oct-Mar on first Tuesday each month at Skirmett Village Hall 7.30. Contact Celia Warren, 01491 638691.

Turville (St Mary the Virgin)

Church Warden:

Caroline Sants, 01491 638994 turvillechurchwardens@gmail.com

Deputy Churchwarden:

Vicky Hollier vickyhollier@aol.com

Bell Ringing: Wed practice,

Rachel Wallace, 01494 883025 rachel@markjwallace.com

Pilat-ease Reformer and Matwork Studio.

Privates & semi-private Pilates classes (weekdays). Lauren Owen www.pilat-ease.co.uk

Sunday School: Sara Harman, 01491 639211

Artists' studios: Turville Studios open the first Sunday of every month 11am-4pm.

Angela Fois turvillestudios@aol.com www.turvillestudios.co.uk

Turville Northend

Village Hall Bookings:

David & Susan Faragher 01491 638960 or 07563 903678, davidfaragher@fastmail.fm smfaragher@fastmail.fm

Yoga: Saturday 8.45-9.45am, Tiffany 07785 615583

Parish Council Contacts

Hambleden: Parish Clerk Lorna Coldwell 01494 881483, clerk@hambleden.org.uk, www.hambleden.org.uk

Medmenham: Parish Clerk Carole Burslem 01494 449215, mpc.clerk@gmail.com

Turville: Parish Clerk Lorna Coldwell, 01494 881483, turvilleparishcouncil@gmail.com, www.turvilleparishcouncil.org.uk

Fawley: Clerk to Fawley Parish Meeting Mr Ross McDonald, 07769 971252 r.mcdonald2007@yahoo.co.uk

Magazine details

Editor: Penny McLeish,

01491 571288, hambledenvalleyleditor@gmail.com

New subscriptions: Penny McLeish,

01491 571288, penny_mcleish@hotmail.com

Advertising Manager: David Napier,

01491 574230, david_napier@btopenworld.com

Distributors:

Fawley: Hilary Beck-Burridge, 01491 413171; Fingest: Brian Barnes, 01494 882613; Frieth: Tony Parkins, 01494 882170; Hambleden: Samantha Webb, 01491 414418; Medmenham: Jim Tilbury, 01628 487135; Mill End: Robert Spicer, 01491 577747; Northend: Susie Phillips, 01491639584; Elizabeth Arnott, 01491 638337, Sarah Evans, 01491 639240; Pheasants Hill: Kate Hussey, 01491 576913; Skirmett: Bessie Webb, 01491 638574; Southend: Valmai Pickett 01491 638523; Turville: Christine Massey, 01491 638679; Woodend: Helen Balkwell, 01628 471403.

Postal Distributor: Stephen Sidders, 01491 639271 stephensidders@sky.com



ROWLANDSCAPES

CREATIVE LANDSCAPE GARDENING

- Patios & paths • Brickwork • Planting & hedging
- Fencing • Driveways • Wildflower meadows
- Lawns • Garden maintenance • Tree surgery
- Woodland management • Agricultural fencing

Telephone: 01844 351919 **Mobile:** 07718 257104

Email: rowlandscapes@googlemail.com **Website:** www.rowlandscapes.com

YOGA IN YOUR HOME

Qualified and experienced yoga teacher at reasonable prices

- 1 to 1 teaching
- Small Groups
- Seniors welcomed
- Hambleden Valley based

Please contact:

Susannah Trombetti

Email: susannahtrombetti@gmail.com

Mobile: 07917 683162

▲▲ D. J. Macleod ▲▲

Tree Surgery, Felling, Planting and Hedge Cutting

Fencing and Gates Supplied and Erected

Quality Firewood for Sale

Producer and Supplier of Wood Chips

Cedar Cottage, Parmoor, Henley-on-Thames RG9 6NN

Mobile 07850 724023

01494 882901

www.donlogs.com

e-mail: donlogs@hotmail.com

Peter Freebody & Co

BOATBUILDERS OF THE THAMES EST[®] OVER 300 YEARS



BOATBUILDERS • RESTORERS • BROKERS

TELEPHONE: 01628 824382 WWW.PETERFREEBODY.COM
THAMES BOATHOUSES, MILL LANE, HURLEY, BERKSHIRE, SL6 5ND

greens
catering



We are special event caterers in
Oxfordshire, Buckinghamshire and
the surrounding areas.

Have an event coming up?
We love to chat food.

Call us today on 01865 400341.

01865 400341 | events@greencatering.co.uk
www.greencatering.co.uk



Advice you
can trust,
experience you
can depend on.

Local people, looking after Local people.

Tel: 01491 411066

sales@timpeers.com | lettings@timpeers.com

Tim Peers Estate Agents | 19 Duke Street
Henley-on-Thames | Oxfordshire | RG9 1UR



www.timpeers.com