

# Hambleton VALLEY

## Group Magazine



Annual Subscription £16

£2.00  
Dec 2022



The Hambleton Valley Group of Churches  
"To see our lives and communities transformed by the love of God"

Hambleton  
with Frieth  
& Skirmett  
Fawley  
Findest  
Medmenham  
Turville



Cover: Hambleden's Angel made by Caroline Cook. This page: Laying of wreaths on Remembrance Day at Hambleden.

## In This Issue

Group Letter	1
Group Notes and News	4
Wildlife	11
Hambleden	12
From the Registers	14
Calendar	15
Fawley	18
Frieth	21
Fingest	22
Medmenham	22
Classified Advertisements	24
Church and Village Activities and Contacts	26

## Weekday Services

**Wednesday - 9.30am, Zoom**

**Daily Prayer - 10.15am, Holy**

**Communion, Turville**

### Emergencies:

If you are unable to contact the Group  
Priests, please get in touch with your  
churchwarden.

All contributions are welcome, to the  
Editor, Penny McLeish  
hambledenvalleyeditor@gmail.com (please  
note change of email address)  
3 Abbey Cottages, Ferry Lane,  
Medmenham SL7 2HB  
Telephone 01491 571288

Please keep articles within 350 words. Copy  
deadline is 15th of the month.

Printed by Higgs and Co., Henley.  
Tel. 01491 419429

### Group Letter December 2022



When our four daughters were small they loved to have an Advent Calendar (in fact they still do...!) to count the days through Advent as Christmas approached. We spent several years living in Germany while the girls were young, the country considered as the birthplace of the Advent Calendar, and there was a most wonderful choice of styles and shapes, each with enticing closed doors that led towards Christmas Day.

The word 'Advent' originates from the Latin 'coming toward' and for many of us, as we begin with that wonderful Advent Candlelit Service in Hambleden – this year on Sunday 27th November at 6pm – we know that we are coming toward that special day in our Church calendar: Christmas Day, heralding the birth of Christ.

Before the advent of the Advent Calendar in the early 1900s, many devised their own way of counting the days by making marks in chalk on their door. The chalk marks or

smudges on their doors were rubbed off, one by one, through Advent as they came toward Christmas.

In this month of December, whether you are opening the doors of your own Advent Calendar or not, you will find the doors of our churches open for all kinds of special services - do take a look inside this magazine or see the newly-designed Hambleden Valley Christmas cards with details coming through your own front door. There is something for everyone, from outdoor Nativities, Christingles, Carol Services to Midnight Mass!

The final doors to be opened on our daughters' Advent Calendars on Christmas Day, were usually stable doors which opened wide, revealing the baby Jesus lying in a manger, inviting us to come toward him. For he is the one who has come to rub out all the smudges and marks in our lives that are not life-giving and to replace them with his love. He is the one who invites us to open the doors of our hearts, to receive the love that he has to offer and to share it with others.

May we each know that love this Christmas.

Christmas Blessings,  
**Sue**

---

# HIGGS GROUP

Design • Print • Copying • Office Supplies • Publishing

Publishers of the *Henley Standard*

Printers of the *Hambleden Valley Group Magazine*

Caxton House, 1 Station Road, Henley-on-Thames, Oxon RG9 1AD

T: 01491 419429 E: [henley@higgsgroup.co.uk](mailto:henley@higgsgroup.co.uk) W: [www.higgsprinting.co.uk](http://www.higgsprinting.co.uk)

---



**Opening Hours** Monday - Sunday  
 Breakfast: 8 - 10 am    Lunch: 12 - 2.30pm    Dinner: 6 - 9.30pm

**The Stag & Huntsman**  
 at Hambleden  
 Tel: 01491 571227  
[www.thestagandhuntsman.com](http://www.thestagandhuntsman.com)

Come to explore  
& get mucky  
in a home-from-home  
atmosphere

# Turville Nursery, Preschool & Forest School

*Expanding Educational Boundaries*

**Small classes and tailored learning  
for children aged from 0 - 5 years old.**

*We would love to meet you!*

01491 638 071    [turvilleschool@evolution-childcare.co.uk](mailto:turvilleschool@evolution-childcare.co.uk)

# BLOCKED EARS?

Lucinda is a qualified NHS audiologist with over 20 years experience. Now providing a home service for **Earwax Removal**. Let her visit you in your own home to help relieve the symptoms of blocked ears.

Full PPE equipment used to comply with recommended Covid safety measures.



**07795 268866**

**[Lucinda@hearingscreening.co.uk](mailto:Lucinda@hearingscreening.co.uk)**

[facebook.com/blockedear](https://facebook.com/blockedear)  
[instagram.com/blocked\\_ear](https://instagram.com/blocked_ear)

HCPC registered  
Registered NHS Audiologist  
Professional indemnity insurance  
Hearing Screening and Testing Limited.  
Registered in England No.07810066

**LUCINDA**  
HEARING  
SCREENING  
& TESTING  
**ELLIS**

## GROUP NOTES AND NEWS

### Harvest Service Reflections

How beautiful the Hambleton Valley looks as the seasons pass. With the rolling by of the months we marvel at the breathtaking landscape, most recently the biscuit-gold of the wheat fields flanked by the deep green hedgerows laden with berries. It is easy to take the beauty of our countryside for granted, without a thought for those who steward it year-round.

Under warm autumnal sunshine on Sunday 18th September, the community gathered to celebrate Harvest Festival at St Mary the Virgin, Hambleton. Many brought offerings for the local families helped by Community Matters in Lane End, an ongoing project enthusiastically supported by the congregation and visitors to the valley's churches. But the highlight of the service was the bringing of wheat sheaves by local farming families. Placed in the centre of the church alongside the choir, they served as a reminder to the congregation, filing past to receive communion, of where our food comes from. It's so easy to pop some sliced wholegrain into the toaster, or tear the end from a fresh baguette, without considering those whose life's work it is to provide it for us.

Whilst the spiritual message of the day, delivered by visiting curate Reverend Andy Storch, reminded us that we should always seek the living bread, in the figure of Christ, as our guide to nourishment and salvation; the Reverend Sue Lepp asked us also to consider the toil and difficulties faced by the producers, the farmers themselves, who are working ever harder for decreasing return. Margins for produce are now so desperately squeezed that many farms run at a loss. Rev Sue highlighted the appalling statistic that, on average, three farmers a week take their own lives. She entreated us to remember this in our prayers and to reach out to those we know or may be concerned for.

In my job, as a Cognitive Behavioural Psychotherapist, I help people every day who have reached out. From 11 to 91, from every walk of life and corner of society, I treat people who need help with their feelings or troubling thoughts, or who are simply at their wits' end. It takes courage to pick up the phone or send

a tentative email, and even more to sit with a stranger to go through it all; but I have rarely found they have regretted making that call.

So, as we survey the changing landscape and pause to watch the game gathered on the ploughed fields in the coming months, I join with Rev Sue and encourage all of us in rural communities to pay close attention to our neighbours. And to really listen when you ask the question 'How are you? Is everything ok?' We may not feel 'qualified' to ask, or might even be afraid of the answer, but sometimes that first contact and the genuine offer of an ear may be all it takes for someone to feel heard and supported. There are always professionals who are available to pick up the reins and carry on what you started. And to those who shy firmly away from the prospect of psychological help I always offer this: If you broke your leg you'd go to a medical professional to get it fixed. If you want help with your faith you'd call the local vicar. If your emotional wellbeing feels broken, why not speak to a professional who could help you fix it?

For immediate 24 hours a day, 7 days a week support call the Samaritans free on 116 123.

The Campaign Against Living Miserably (CALM) is free to call every day from 5pm-Midnight on 0800 585858.

[www.psychologytoday.com](http://www.psychologytoday.com) can help you find a therapist in your area.

### Victoria Whittle

[victoriawhittlecbt@outlook.com](mailto:victoriawhittlecbt@outlook.com)



### Wild Church:

#### Act of Remembrance Sunday 13th November 2022 at 2pm

It was the warmest, sunniest, most still, perfect November day in decades. Over one hundred people and five dogs gathered together at

*Continued on page 7*

# Hambleden Village Hall

The perfect venue in the middle of the beautiful village of Hambleden.

Large hall, full kitchen facilities, patio, WiFi, hearing loop, free parking.

Hire by the hour or by session.



**For more details and prices contact Jamie Baker on 01491 410669 or email: [enquiries@hambledenvillagehall.org](mailto:enquiries@hambledenvillagehall.org) visit [www.hambledenvillagehall.org](http://www.hambledenvillagehall.org)**



## HAMBLEDEN VILLAGE STORES & POST OFFICE

**Local Artisan Produce - Freshly Ground Coffee & Teas  
Filled Rolls & Toasties - Homemade Sausage Rolls  
Organic Cakes - Fresh Bread & Pastries - Ice Creams  
Seating Area - Post Office**



**That groovy little store!  
All locally sourced and made with love!**

**Mon 8am-4pm  
Tues-Sat 8am-5pm  
Sun 8.30am-4pm**

**58 The Village. Hambleden. [info@hambledenvillagestores.com](mailto:info@hambledenvillagestores.com). 01491 571201**

# The Pedestal

Henley-on-Thames' auctioneers with world class expertise, local and international reach we offer a calendar of specialist and single owner auctions as well as our 24/7 online Shop

## UPCOMING AUCTIONS

### **Design For Living**

6 December 2022

### **Winter Timed Auction**

Bidding opens 10 January 2023

### **Fine Interiors**

7 March 2023



### **For an auction valuation please contact:**

Guy Savill or Sally Stratton MRICS on: +44 (0)1491 522733 or email: [valuations@thepedestal.com](mailto:valuations@thepedestal.com)

### **The Pedestal**

The Dairy, Stonor Park, Henley-on-Thames, Oxfordshire RG9 6HF

[www.thepedestal.com](http://www.thepedestal.com)





*photo 1 The Piper Cub flypast was flown by James Cooling photo 3 The cross was made of parts of the Spitfire found at the site. Photos taken by Mardi Wilkins and Teresa Russ.*

Turville Heath under a canopy of beech trees, resplendent in their autumn-coloured leaves. We gathered there to commemorate the lives of those lost at the D-Day landings, and in particular a young reconnaissance Spitfire pilot, Peter John Spencer, who lost his life on 1st December 1943 in a crash just off Balhams Lane.

On a simple table sat a cross. It was fashioned from parts of that Spitfire that had been found on the crash site by a local researcher, Malcolm Bailey, some years earlier. A photo board displayed pictures of Pilot Officer Peter Spencer, his plane, and his gravestone in Botley cemetery.

Reverend Sue Morton welcomed everyone to the Wild Church's Act of Remembrance and led the opening prayers. We were told of the duties of the photo-reconnaissance unit and a description of the last flight that Pilot Officer Peter Spencer took, and which had such a sad outcome. We learned how Turville Heath was used to train troops for the D-Day landings, because the road was so similar to those in France.

We listened to Mark Morton's reading from the Bible and David Redhouse read the prayers. Oscar Deakin read the Exhortation, resplendent in his Marine Cadet uniform.

We listened to the haunting, moving sound of the Last Post, played by Richard Simpson on his oboe. The two-minute silence was ended by him playing Reveille.

The *Airman's Hymn* started the service, which closed with the rousing Jerusalem with the help of the Wild Choir. While we were enjoying Mary's wonderful refreshments, we were then treated to flypasts by a local pilot, James Cooling. As we all looked up through the bright orange foliage into the beautiful blue sky, and waved and clapped as James flew overhead, we (unintentionally) stopped the traffic!

Our thanks go to all the volunteers who helped make this event happen. Graham Wheeler and Paul Marston Weston did the sound. Angela Magee, Judy and Alistair Hunt and Lynda Marston Weston were stewards. Mary Campbell and Mardi Wilkins are part of the Wild Church Team and did so many things.

As the sun went down, one couldn't help thinking, in our own way "*We have remembered them.*"

**Val Mosedale**



**Niece of 20-year-old Pilot Officer Peter Spencer**

**Wild Church coming up:**

**Sunday 11th December: Wild Nativity 2pm\* on Northend Common**

All children (and adults too if you wish...) are invited to come along dressed as a character from the Nativity Story, following on from the Village Hall Christmas drinks 12-2pm.

Join us to sing some well-known Christmas carols!

**Sunday 8th January 2023: Wild Church Plough Sunday 3pm\* - more details to follow!** \*Please note times

At Wild Church we will sing a couple of well-known hymns, hear a Bible reading and simple prayer. As always do **dress for the weather** –we will meet come rain or shine! \*\*To find out more, please get in touch with one of the Wild Church Team: Mary Campbell grandma. marycampbell@googlemail.com  
Mardi Wilkins mardid43@btinternet.com  
Rev Sue Morton 01491 639286 or suemorton131@gmail.com

**Community Matters Update**

*Lucy Smith, from Community Matters in Lane End, has been so grateful on behalf of the families for the donations they have received from the Hambleton Valley and has sent us this update, Sue Morton.*

This past month of November, Community Matters was so pleased to receive all the harvest contributions. Here are a few stories of how the families have been supported.

A phone call came in early on in the day from a mum who asked if somebody could help as the children were off school with illness. She needed some bread and milk. It is this sort of event when our team share and one of us can step in and get this shopping. Foodbank is our main activity but we can sometimes step up to the plate and help.

This month we have been able to contribute to the cost of a school residential trip. These trips are quite costly these days and children are not left out due to their parents' income. So, it was great that Community Matters could help two families. These school trips were in the summer so parents have to spread the cost until it is fully paid.

Barbara Ewing (part of the Community Matters Team) has been taking some people to medical appointments. These are fitted in the week at all sorts of times. There is so much appreciation that we can do this. It is also a chance for good conversations.

We are now noticing the tough choices for families. Keeping warm or eating. We are so glad that we have funds to help with fuel bills.

**Lucy Smith**

**December 2022**

**On the Chilean Trail...**



Chile is edging a little closer and the plans for my sabbatical for 2023 are beginning to take shape! We're gradually becoming more familiar with the geography of this ribbon-shaped country - around 2,700 miles from north to south - sandwiched between the Pacific Ocean and Argentina.

My sabbatical will begin on 17th January, returning to ministry on 15th April. For about six of those weeks, we plan to fly to Santiago

and will spend some time in northern Chile in the Atacama Desert, before travelling south to Temuco - the Lake District - and then even further south to the Chilean part of Patagonia. We shall then return to Santiago to begin meeting with clergy and pastors and visiting churches both in the city and in more rural areas of Temuco. It will be fascinating to explore the shape and style of worship in these places great and small and to see how their love for God flows through the suburbs and villages around them. There will, I'm sure, be differences and similarities with the Hambleton Valley!

Thank you so much to all of you who have been in touch with stories of visits and connections with Chile – I've loved hearing them! Above

Continued on page 11

*For the perfect relationship...*



Savills Henley  
01491 843 000

[savills.co.uk](http://savills.co.uk)

don't rely on luck, rely on



## Graham Blake soft furnishing

- Loose Covers • Curtains •
- Re-Upholstery • Tracks and Poles •

TEN YEAR GUARANTEE

For personal, helpful service, please call

Tel: 01844 261769 • Mob: 0780 1182 400

grahamblake123@btconnect.com

www.grahamblake.com

## Midway Chimney Sweeps and Linings

*Chimney Sweeping and Boiler Cleaning*

Member of National Association of Chimney Sweeps

Recommended by Coal, S.F.A.S. and Gas Board

ESTABLISHED OVER 30 YEARS

TELEPHONE: HIGH WYCOMBE (01494) 564321

Mobile 07850 196616

## G M PAGE FURNITURE RESTORATION

**ALL ASPECTS OF FURNITURE RESTORATION  
UNDERTAKEN, BOTH ANTIQUE AND MODERN**

DINING TABLES REFINISHED  
FRENCH POLISHING AND MODERN FINISHES  
RE-UPHOLSTERY  
CANE AND RUSH WORK  
SPECIALIST VENEER REPAIRS  
DESKS RE-LEATHERED

INSURANCE WORK UNDERTAKEN

TELEPHONE: 01494 511234  
MOBILE: 07754533128  
EMAIL: page1830@aol.com  
WEBSITE: gmpagerestoration.co.uk



**EST. 1988**

all, I thank you for your prayers as we continue with our preparations. More details will unfold in the next magazine!

God bless you,  
**Sue Morton**

## WILDLIFE

### In praise of mowing with a scythe



I have been mowing my small meadow with a scythe. I was initially inspired some time ago, watching a lady in her nineties slashing her way through pasture using one. I now understand they are heralded as the best tool to cut wildflower meadows and other areas of long grass so the moment

had arrived. Unsure where to begin with buying my own but bursting with enthusiasm, I borrowed a beautifully crafted instrument made in Austria from a friend. I will confess that after ten minutes at my first attempt I was beginning to wish I hadn't. Several hours later any thoughts of returning it and admitting defeat were a distant memory as I literally got into the swing, trying to remember to bend my knees, swivel my hips and pull the blade through the grass with my left hand. I had watched a number of YouTube videos which made it look easy. Easier it certainly is with a razor-sharp blade but the knack of whetstone sharpening the cutting edge is a craft in itself. It came with a choice of three blades which attach with a hex key to a carved wooden handle known as a snath. They are surprisingly light and deemed to be ergonomic, some more than others. The dictionary definition of ergonomic is 'relating to or designed for efficiency and comfort in the working environment'. I have not mastered the technique sufficiently for the word 'comfort' as I understand it to feature in any way whatsoever during my two-hour sessions between downpours; this is one heck

of a work out but when I swing it properly, a scythe is certainly very efficient at mowing. Scything hitherto mown grass has to be considerably easier than my meadow and overgrown lawn where yellow rattle still hasn't quite got a stranglehold on the tough grasses. Using a scythe requires a relaxed stance to lawn maintenance; there will be no parallel lines but in areas where you wish your grass to be short, it is very achievable. Damp grass is apparently preferable so starting early with a morning dew is perfect. The peaceful silence and lack of fumes is a joy. One swish and an area of tall, dying vegetation is magically swept aside to reveal a deep green carpet of healthy new wild flower seedings a couple of inches or so high everywhere; shuffle forward and repeat. I am completely smitten and will be acquiring my own.

Also, a plea not to rake up all your leaves. I watched a small flock of redwings here this morning tossing leaves around and feasting on all sorts of delicacies too small for my binoculars to identify. Please view fallen leaves as a temporary blanket under which thousands of cocoons, larvae and other insects seek protection from frost and predators. Over time worms pull leaves underground, digest them and improve our soil. It is a perfect cycle if only we could relax, live with this beautiful autumnal mantle and let nature do it her way ultimately to the benefit of us all.

**Sarah Ronan**

### More Visitors

A large grey cat with orange eyes sat on the green carpet. I was about to say "Shoo!" but realised this would be rude. The thing to say was "How do you do". It's important to begin on the right note when your visitor's manners are impeccable. Distracted by television, I was reminded of mine when a large paw slowly descended over my eye to prevent further viewing. One day his owner told me they were moving. "Oh dear!" said Joe Foster sympathetically. "Does he know High Wycombe? Have they told him?"

## HAMBLEDEN



An Estate Agent's flyer asked "Who is living in your house?" On it, in my mother's handwriting: "ME, spiders, silver fish, earwigs, wood-lice, flies, ladybirds, cat, a few mice, beetles, butterflies, moths." When a squirrel moved in as well, she was relieved the Pest Officer's bait was not taken: "I am just going up into the attic to annoy the squirrel".

Phil Dean told me Jackdaws would rather fly all the way to Fawley to get a new twig than pick up one of the fifty-five they have dropped below their (completely hopeless) nest under the eaves. As well as noise, there's a lot of kindling.

The best way to get a photo of a robin for a Christmas card is to arrange some sparkly decorations in the garden and wait for it to perch on them. It will then ignore them and fly into the house through the open front door so you can get the pic. Here it is.

**Caroline Davis**

## HAMBLEDEN

### Coffee Afternoon

£529.70 was raised for the Air Ambulance following the Coffee Afternoon in the Sports Club in Hambleden at the end of October. A Big Thank You to everybody who supported it.

**Pat Eldridge**

### Hambleden Christmas Tree Festival

Once again Hambleden is hosting its Christmas Tree Festival at Hambleden Village Hall.

This year it will take place on Saturday 10th December 2022.

A delightful way to begin the festive season, there will be around 18 Christmas trees on display, all of which have been individually decorated by local families, businesses and clubs. Mince pies and cakes will be served, all to be washed down with a glass of warming mulled wine or tea. Some live festive entertainment will also be provided.

Do come and join in the seasonal fun. Doors open to all from 1pm to 5pm. Entry is FREE!

**Helen Turner**

**Hambleden Christmas Tree Festival**

**Hambleden Village Hall**  
**Saturday 10th December**  
**1.00pm – 5.00pm**

Come and get in the festive spirit. See over 18 Christmas trees in one room, each decorated by a local family, school, club or company. Sample the seasonal refreshments and enjoy some live Yuletide entertainment.

**Free Entry**  
Mulled Wine and Mince Pies, Teas and Cakes, plus Christmas carols and entertainment for all the family

Registered Charity No: 300275

**All in aid of raising funds for Hambleden Village Hall**

### Hambleden Cinema

Come and join us on Saturday 17th December at 3pm, for a fun family matinee watching and singing along to The Greatest Showman, rated

Continued on page 17

# Absolutely Fabulous

CARPET, RUGS, UPHOLSTERY & STONE FLOOR CLEANING

EXTENDING THE LIFE OF YOUR CARPETS, RUGS, UPHOLSTERY & STONE FLOORS

**The most thorough cleaning you've ever seen... or it's FREE.**

For Absolutely Fabulous cleaning of your carpets, upholstery, rugs or stone floors, give us a call today **01491 540005**



We have our own dedicated rug wash facility  
**Free collection and delivery of all rugs.**



All floor tiles and grout cleaned, full restoration of  
all natural stone floors (incl. marble floor polishing).



"Excellent time keeping, very courteous, excellent workmanship" ★★★★★

"Honest, friendly, efficient and reliable" ★★★★★

"Thorough, prompt, friendly, knowledgeable" ★★★★★

"I would definitely recommend this company to all my friends and family." ★★★★★

[www.abfab.uk.com](http://www.abfab.uk.com)



**Holiday Villa to Let**  
[www.corfubeachhouse.co.uk](http://www.corfubeachhouse.co.uk)





# CALENDAR FOR DECEMBER 2022

## Sunday Services

	Fawley	Fingest	Frieth	Hambleden	Medmenham	Turville	Zoom
27th Nov Advent 1	11am Holy Communion			11am Holy Communion 6pm Advent Candlelit Service		9.30am Holy Communion	none
4th Dec Advent 2			10am, Group Service			4pm, Christmas Lights and Carols	none
11th Dec Advent 3	11am Holy Communion 4pm Railway Nativity	9am Holy Communion		11am Holy Communion	6pm Carol Service	2pm Wild Church, Northend Common	none
Fri 16th Dec			6pm Christingle and Carols				
Sat 17th Dec	4pm Carol Service						
18th Dec Advent 4		6pm Carol Service	9am Holy Communion/Zoom	8am BCP Holy Communion 10am Lay-led Morning Worship 7pm Carol Service			9am
Tues 20th Dec					3pm Christingle		
Sat 24th Dec Christmas Eve				5pm Christingle 11.30pm Midnight Mass		3pm Crib Service 11.30pm Midnight Mass	none
25th Dec Christmas Day	11am Family Communion	9am Family Communion	9am Family Communion	11am Family Communion			none
1st Jan 2023					10am Group Service		none

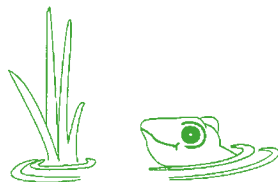
# The Frog at Skirmett, Henley-on-Thames

(Closed Sunday Evening — November to May)

Non-smoking Restaurant with an unusual selection of New English, French and Mediterranean style food.

Food is served for LUNCH and DINNER 7 days a week, May to November

Family room for children. En-suite accommodation. 36 seat function room



**Tel: 01491 638996 Fax: 01491 638045**

Gerrards Cross  
38 Oak End Way  
Tel: 01753 891892

Slough Slough  
273 Farnham Road  
Tel: 01753 535556

High Wycombe  
891 London Road  
Tel: 01494 472572

Marlow  
21 -23 Little Marlow Road  
Tel: 01628 898866

Beaconsfield  
32 Gregories Road  
Tel: 01494 685000

Traditional, Alternative & Green Funerals  
Pre -Payment Plans ~ Stonemasonry ~ Floristry



6 Generations of Service in the Community  
24 Hour Service

## ARNOLD FUNERAL SERVICE INDEPENDENT FAMILY FUNERAL DIRECTORS



## COAT & TAILS

All breeds of Dogs and Cats • Long Coats a speciality  
Collection or home service by arrangement

MAIDENHEAD-MARLOW-HENLEY  
PROFESSIONAL & CARING  
With 35 Years' Experience  
Clipping/Hand Stripping

Rotten Row Farm • Hambleden  
Henley-on-Thames • Oxon  
Tel: 01491 636140

[www.coatandtails-Hambleden.co.uk](http://www.coatandtails-Hambleden.co.uk)

## Whatever you want to store...

...for whatever reason - house sale and purchase not coinciding, travelling, house building work, paperwork overload or even "de-cluttering" to sell your house more quickly - we offer a friendly and flexible local service.

With competitive rates, secure storage and hassle free 24/7 access, contact us now!



**01189 404163** [www.barn-store.co.uk](http://www.barn-store.co.uk)

PG. This film is a bold and original musical that celebrates the birth of show business. Inspired by the ambition and imagination of P T Barnum, *The Greatest Showman* tells the true story of a visionary who rose from nothing to create a mesmerising spectacle that became a worldwide sensation. Since its release in 2017 the film has become one of the most successful musicals of recent times. Celebrate the party season with this fun sing-a-long version with lyrics on the screen so you can join in as loudly as you want. Fancy dress is encouraged and full audience participation is essential!

Doors open 2pm, programme begins 3pm.

Tickets £8 each can be bought from [www.hambledencinema.co.uk](http://www.hambledencinema.co.uk) and from Hambleton Village Stores

There will be a bar selling soft drinks, wine, beer and tempting delicious cinema snacks!

In aid of raising funds for Hambleton Village Hall Registered Charity 30027

### **Hambleton Cinema Team**



ORIGINAL MOTION PICTURE SOUNDTRACK Rated PG  
CASTING BY JACKMAN EYRON WILLIAMS DIRECTED BY MICHAEL O'KEEFE  
**THE GREATEST SHOWMAN**  
ORIGINAL SONGS BY BENJ PASEK & JUSTIN PAUL  
Presents **SING-A-LONG EDITION** Special Family Christmas matinee

**HAMBLETON VILLAGE HALL**  
**Saturday 17th December 2022**  
Doors & Bar open 2pm, Programme begins 3pm  
Tickets £8 on sale at  
[www.hambledencinema.co.uk](http://www.hambledencinema.co.uk)  
and at Hambleton Village Stores

Children under 16, need to be accompanied by an adult over 18  
Everyone welcome, you don't need a child to attend  
Cashless and Contactless payments  
In Aid of Raising Funds for Hambleton Village Hall Registered Charity 30027

### **The Quality Sale is Back!**

Saturday, 25th March 2023

Hambleton Village Hall

2 - 4.30pm in aid of Handicapped Children's Pilgrimage Trust

Charity no. 281074 [www.hcpt.org.uk](http://www.hcpt.org.uk)

I would be most grateful to receive ANY quality goods when you are having a sort out. Also, raffle prizes, cakes, donations and help is required on the day, please.

Thank you.

**Teresa Russ 01491 571451**

### **George Cook, Hambleton Sexton, 1922-1948**



*George and Granddaughter, Joy c.1943*

This year marks 100 years since my grandfather, Alfred George Cook, took up the post of sexton at Hambleton church.

George (he never used his first name), who was 39, had been head gardener at a large house in

Holyport, Berks. The arrival of his third child, Alfie, in 1922 meant that he had to look for a new job. A condition of his employment and a tied cottage was that two children were the limit and George and his wife, Carrie, already had two daughters, Florrie and Edie.

Rector Stanton had already interviewed him and found him, as a practicing Anglican and bellringer, suitable for the role and asked him to come to Hambleton and start as soon as possible. So, sometime in 1922, Carrie walked from Henley station with her two daughters aged 14 and 7, pushing Alfie in a pram, whilst

## FAWLEY

George followed with the carter and all their worldly goods.

That was the beginning of George's 26 years as sexton and gravedigger at Hambleden under Stanton and then Wilfrid Watts. In those days the responsibilities of the full-time sexton or verger included keeping the church clean and tidy, attending services, stoking the heating furnace and lighting the oil lamps in winter and mowing the churchyard by scythe in summer. Wilfrid Watts said that he had never seen a man so skilled with the scythe.

The family lived in the Old School House and Carrie looked after the Parish Rooms. This included catering for large parties and it helped that she had been cook to a large household in Henley. A three-course lunch would cost half-a-crown. She also baked bread for holy communion in the days before the introduction of wafers.

George and Carrie retired in 1948, stayed on in the village and are buried together in the 'New Cemetery', George stipulating cremation as he had dug too many graves to wish to burden someone else with the task.

What of the children? Florrie moved to Wakefield after marrying the bishop's chauffeur. Alfie married Ethel Plumridge from Pheasants Hill and ended up in West Wittering via Twyford. Edie stayed in the village marrying Arthur Wheeler (later the "Best Butcher in Hambleden") and dying at 94.

She always remembered that walk out from Henley in 1922.

### Robert Wheeler

## FAWLEY

### Halloween on the Hill



Reflective of the young families who now live in Fawley, Halloween on the Hill has become a popular and much anticipated annual event. 35 children, dressed in all manner of spooky costumes, some using various modes of transport - bikes, scooters, parents' shoulders and even horses, followed the Halloween trail, looking for pumpkins denoting houses where treats could be found. Even villagers whose houses weren't on the trail got involved; the well on The Green was transformed into a well stuffed with treasure but guarded by an army of sinister skeletons. The highlight was the surprise of a ghoulish figure who had taken over the disused phone box, jumping out at not only the trick or treaters but a couple

Continued on page 21



## Peter the Painter

T/A Ideal Decorations

### Interior and Exterior Decoration

32 Green Dragon Lane, Flackwell Heath, Bucks HP10 9JZ

Telephone: 01628 527865 Mobile: 07976 513652

[peterthepainter@live.co.uk](mailto:peterthepainter@live.co.uk)

# T&S

Tomalin & Son

## A Family Run Independent Funeral Service

24 hours service | Private client parking | Private chapel of rest  
Free home visits | Pre-paid funeral plans | Full written estimate

# Tel: (01491) 573370

[www.tomalins.co.uk](http://www.tomalins.co.uk)    [office@tomalins.co.uk](mailto:office@tomalins.co.uk)  
Anderson House, 38 Reading Road, Henley-On-Thames, RG9 1AG



Golden  
Charter  
Funeral  
Plans

## J. A. BRAKSPEAR PLUMBING & HEATING LTD

TEL/FAX: 01491 575428

E-MAIL: [JOHNBRAKSPEAR@GMAIL.COM](mailto:JOHNBRAKSPEAR@GMAIL.COM)



Registered  
Business

**Bathroom renovations • Boilers Replaced  
Heating system Maintenance and Installation  
Free Estimates • No Job Too Small**



## Skirmett Village Hall

A bright lovely hall with fully equipped kitchen in the Hambleden Valley available for meetings, workshops classes and parties.

Website: [Skirmettvillagehall.org](http://Skirmettvillagehall.org). For bookings  
Contact Mandy Heller 01491638355

# ▲▲ D. J. Macleod ▲▲

Tree Surgery, Felling, Planting and Hedge Cutting

Fencing and Gates Supplied and Erected

**Quality Firewood for Sale**

Producer and Supplier of Wood Chips

Cedar Cottage, Parmoor, Henley-on-Thames RG9 6NN

Mobile 07850 724023

# 01494 882901

[www.donlogs.com](http://www.donlogs.com)

e-mail: [donlogs@hotmail.com](mailto:donlogs@hotmail.com)



# Danesfield Gardens

Henley Road, Medmenham, Near Marlow, SL7 2EU

Your local nursery for bedding and patio plants for spring and autumn  
Baskets filled, compost, chimney pots and ornaments

Phone: 01628 484509

Betty Ryan  
and Isabel McCrindle




**Denning Montessori Nursery and Forest School - Fawley**  
[www.DenningMontessoriSchool.com](http://www.DenningMontessoriSchool.com) - Tel: Jenny 07982 620710



*J & D Mooney*  
 YOUR "CLEAN" RELIABLE QUALITY  
 PAINTER & DECORATORS  
 — DOMESTIC & COMMERCIAL —  
*Family run business for over 30 years!*  
 Telephone 0118 934 4230  
 Mobile: 07961 366535  
[darrenjomooney@hotmail.com](mailto:darrenjomooney@hotmail.com)  
[henleyschicdecor.co.uk](http://henleyschicdecor.co.uk)

- N.V.Q. Qualified
- Many references available in and around Henley
- No job too small!!!
- Interior and Exterior work done!
- Free Competitive Quotes! — No Obligation
- Prompt and Friendly Service!
- C.I.S. Registered Business
- Full Public Liability Insurance
- Specialist in Rural run down property



# W. J. Webb & Son Ltd.

(Established 1968)

**BUILDERS and DECORATORS**  
**CONVERSIONS and GENERAL REPAIRS**

Hambleden, Henley-on-Thames  
 Tel: 01491 571366  
 e-mail: [wjwebbandson@googlemail.com](mailto:wjwebbandson@googlemail.com)

of unsuspecting walkers resting on the bench opposite. Luckily the defibrillator did not have to be used. The finale, a party at Fawley Hill, begarbed with spiders, cobwebs and inhabited by Fawley's witch extraordinaire (Lady J), was the perfect finish to a brilliant Halloween.

**Marina Fogle**

**FRIETH**

**Frieth School**



With so much packed into such a super Science Week it's been a great start to this half term. We were lucky to welcome in a Mad Scientist, Planetarium and Berkshire Reptiles (I still can't believe how brave the children were holding them!). Also, a huge thank you to our super parents who came

in and delivered some fantastic workshops! The children all learnt about a famous scientist and the teachers provided a range of exciting experiments for the classes to do. What a week it was!

Jolyon Marshall also came into the school again who told the children all the about the science involved in clockwork and in particular the restoration of the Frieth Village Clock. Jolyon has also set the children a challenge of designing a clock face which represents our school vision 'let your light shine'. The winning design is then going to be made into a real clock and displayed at school! I can't wait to see it!



The netball season kicked off with a super performance against Holy Trinity Cookham. It was a great game that could have gone either way but in the end a draw was definitely a fair result. The team is looking forward to the next one!

Thank you to all our parents who attended our Remembrance Service on the 11th November. The children were a credit throughout and delivered the poems and song beautifully. It is so important that the children understand the significance of this day, what we fought for and continue to fight for, and to remember those who have lost their lives.

A big 'well done' to all pupils involved in our Open Evening. As always, they were an absolute credit to the school! Miss Steventon has clearly been doing a

## FINGEST AND MEDMENHAM

phenomenal job with the choir who I know made quite an impression on the prospective parents! Of course, a special 'well done' needs to be given to our Head Boy and Head Girl who delivered their speeches so professionally. I would also like to thank our wonderful teaching staff for all their hard work and our fantastic Governing Body for their support. It was a real team effort!

**Martin Gosling**

**Head Teacher**

### FINGEST

#### Fingest Past

**Parish Meetings (1)** – Keeping the Peace - Great-great-uncle John Hussey, of Pound Farm, Cadmore End, is listed as one of twelve jurors at a Court Leet and View of Frankpledge at Fingest Manor Court on 25th October, 1780 and again in 1790 at the house of John Hobbs of the Kings Head, Bolter End. The Court Leet was a criminal court to try small offences and the View of Frankpledge where all men in the village and their households were bound together to keep the peace. The Frankpledge was replaced by a system of justice where a group of ten men from the village paying tithes formed a jury.

Guardian of the Poor - John's great nephew, Thomas Hussey of Stud Farm, Skirmett, was one of four ratepayers at a meeting to elect a Guardian of the Poor for the Parish of Fingest held on 25th March, 1837. From the minutes, "*Mr. John Biggs was nominated and elected to that office. Present, Charles Handcock Esq., Mr. John Mead, Mr. Thomas Hussey, Revd. J. Peers*".

Vestry Meetings - In 1844 and 1855 the Vestry Meetings for St. Bartholomew, Fingest were held at the Peacock Inn, Bolter End. Records of Vestry Meetings for the

Parish of Fingest held from 1846 to 1892 are missing. Meetings were held at the Old Rectory, Fingest from April 1893 until April 1914 and then in the church vestry. During this period, it was the custom for the Rector to appoint one Churchwarden, the Rector's Warden, and for the parishioners to elect a People's Warden. From the minutes of the 1910 Vestry Meeting, "*The Rector re-appointed Mr. Cannon as Churchwarden and Mr. Bennett was re-elected by the parishioners*".

**Don Boreham**

### MEDMENHAM

#### Jennifer Beresford



(Born 10th Feb 1928, Died 20th Sept 2022)

Jennifer Beresford lived in Medmenham for 67 years and died peacefully at home with her family around her on 20th September this year. She was very active and hardworking and had a real impact on Medmenham and on the wider Hambleton Valley. Her enthusiasm and love of life were palpable and inspired many of those around her to get involved in their community.

She, and her beloved husband Christopher, developed numerous clubs in Medmenham including a play reading group and a book club, and initiated many community events such as Open Gardens, the hilarious village



pantomime and a very popular all-age barn dance. She also set up initiatives in the wider Hambleden Valley such as the Funbaree – a summer holiday children’s playscheme. She was a church warden for many years and completely transformed and renovated the church cottages providing good rental accommodation and an excellent income for the church.

Jennifer – who was initially a committed social worker in Marlow and High Wycombe – went on to run a centre to support the families of disabled children. After retiring she was very involved in campaigning for women priests and for women to have a stronger voice in the church – she ran confidence building courses for women and wrote a very successful book “Creating Confidence in women”.

She loved to share her beautiful garden and swimming pool and hosted many events including regular garden parties for the interfaith group (which she ran for over 40 years) and retreats through the “Quiet Garden” movement. She also held

the Medmenham fete there (instituting the famous egg throwing competition) as well as wonderful bonfire night parties for the village.

When Jennifer’s daughter Emma married Tam, an Ethiopian, Jennifer rose to the challenge and embraced her new family in Ethiopia. She became particularly interested in a group that were very discriminated against called the Negede Weyeto. She raised over £12,000 from the Hambleden Valley and transformed their lives with running water, toilets and blankets. Money is currently being raised in her memory to provide much needed books for a library used by the Negede Weyeto – if you’d like to donate, please send money to Partners for Change Ethiopia, Sort code: 158000 Account no: 11624149. Please mention “Jennifer Beresford” as the reference.

Jennifer was a remarkable woman who lived a very generous and very full life and left a wonderful legacy behind her.

### **Emma Beresford**



## **Turville Northend Village Hall**

Large Hall, Committee Room, Kitchen, Private Terrace, Parking.  
Available for: Meetings, Workshops, Parties, Weddings, Classes.

For further information & bookings visit: [www.thevillagehall.co.uk](http://www.thevillagehall.co.uk)  
Turville Northend Village Hall, Northend, Henley-on-Thames, Oxfordshire RG9 6LJ

## ADVERTISEMENTS

**Corfu** — comfortable sea-edge villa in Durrell country to let privately. Between Kassiope and St Stefanos. Direct BA flights from LHR Ter.5. [www.corfubeach-house.co.uk](http://www.corfubeach-house.co.uk) Armstrong 01491 571324

### North Cornwall,

**Harlyn Bay** Padstow 4 miles. Family cottage with garden. Sleeps 6. Quiet lane with footpath leading to huge sandy beach. Excellent surfing, walking, golf. Very reasonable rents. Beck-Burridge 01491 413171.

### Computer Problems?

Local help in fixing problems, selecting systems and personal tuition including email/ internet. Contact Matt on 01491 575998 or 07821 592928.

### Mulberry Flooring.

Specialists in wood floor restoration. Please call for free quote 01494 535348.

**Rock, North Cornwall.** Old cottage by the beach, newly refurbished, sleeps 8. Available for holiday lets. Contact Mandy Heller on 01491 638355 or [johnheller@poyonnattscottage.com](mailto:johnheller@poyonnattscottage.com)

**Salcombe, South Devon.** Three bedroom cottage, recent refurb, stunning estuary views, quiet & close to town centre, sleeps six, easy access beaches/walks, holiday lets throughout year, 01491 577344

**The Pet Feeders** - We look after your pets when you can't. Local firm, insured/CRB checked. [www.thepetfeeders.com](http://www.thepetfeeders.com). Mobile: 0753 100 7419. Email: [info@thepetfeeders.com](mailto:info@thepetfeeders.com)

**Valencia** Large Luxury Family Villa with Pool and Tennis Court. 15 mins from the City Centre, 10 mins from the Airport. Sleeps 14 comfortably, 6 bedrooms / 4 bathrooms. Visit [www.homeaway.co.uk/p1029900](http://www.homeaway.co.uk/p1029900) to see our reviews. Contact Virginia or Andy Coombes for more information on 01491639419/ 07860847256

**Snowdonian Cottage.** Cosy and comfortable traditional 3 bed stone cottages sleeps 6, wood burner and wi-fi, in coastal village, Llwyngwrl on the Welsh Coastal Path. An ideal base to enjoy and explore 'the most dramatic and alluring region in Wales'. Beaches, mountains, River Mawdach and Dyfi

Estuaries, lakes and so much more. Dog Friendly. Contact Euan McCrindle 07713 952495 / 01628 475644 or email [euancmccrindle@hotmail.com](mailto:euancmccrindle@hotmail.com) for more information and detail.

**Music Teacher!** - Qualified musician offering great value Piano and Vocal lessons. 5 Years Experience, Fun and engaging lessons for all ages and abilities. Contact Sasha Steventon (BMus) on 07740 289467 or [bluemusic@outlook.com](mailto:bluemusic@outlook.com) [www.bluemusic.co.uk](http://www.bluemusic.co.uk)

**Isle of Mull.** The Bothy sleeps 4, available for weekly holiday lets, and The Studio sleeps 2, available for 2-5 nights. An ideal peaceful location for exploring this beautiful island. Wonderful panoramic views, walks, beaches, wildlife. Visit [www.thsmithymull.co.uk](http://www.thsmithymull.co.uk) for more information.

**Dairy Lane Dog Grooming** Hand-stripping, Clipping, Scissoring, Bathing, Nails. Louise McTeague, 4 Dairy Lane, Hambleden, Henley-on-Thames, Oxon RG9 3AS Tel 01491 579442 Member of British Dog Groomers Association and Pet Care Trust



## HAMBLEDEN SPORTS & SOCIAL CLUB



### Have you ever ventured inside the Hambleden Social Club?

**Hambleden Sports and Social Club** is a community organisation providing sporting facilities on the Dene in Hambleden, as well as a Social Club in the village centre. The current sporting sections are cricket, tennis, football and pool.

Take a look at our website at [hambledenssc.co.uk](http://hambledenssc.co.uk) for more information.

The **Social Club** is situated in the centre of Hambleden Village, to the left of the Post Office/Shop. The club is a members club which allows us to provide alcohol and soft drinks at low prices, for consumption by our members and their guests. The Social Club offers fruit machines, pool table, darts, TV, comfortable seating and a friendly atmosphere!

**Membership:-** £25 per year or £13 for OAPs and Students

**Opening hours:-** 8pm - 11pm (Tuesday – Saturday)

You can also hire the Social Club for meetings during the day and functions in the evening. Please contact **Pat Eldridge 01491 576067** for more information.

***We are lucky to have this facility in our wonderful valley, please do pop in and take a look for yourself!***

## Protecting your wealth and loved ones

- Everyone should have a Will, but 2 out of 3 people have not yet made one, and those that **have may not have the correct Will** in place.
- If you own a business or a share of a business, your spouse/partner and children may not necessarily inherit your share.
- An estimated 70,000 people per year have to sell their homes to **pay for care**.
- Effective planning can also protect the **inheritance of future generations** from **divorce or separation** settlements.
- By setting up **lasting powers of attorney** you can rest assured that your finances and personal welfare are in safe hands.

**In association with Countrywide Tax & Trust Corporation Limited, I provide a professional, tailor-made service to help individuals to safeguard assets, regardless of their value and protect their loved ones.**

My decision to get involved in Wills and Estate Planning was a result of personal experience. I learnt first-hand how unpreparedness adds to the stress of dealing with long-term illness and death. Get in touch for advice that can guide you to make informed decisions that suit your needs.

**Visit [www.personalestateplanning.co.uk](http://www.personalestateplanning.co.uk) for further information.**

Judy Bonfanti, FCCA, STEP Affiliate

[judy.bonfanti@hotmail.com](mailto:judy.bonfanti@hotmail.com)

0781 0642 505

# Lawn Master®

professional lawn care

Your lawn, our  
expertise...  
*perfect!*



A Corporate Member

IOG



UKALA  
Certificate Number 8302  
(2010)

SEE RESULTS IN JUST  
**10 DAYS**

For a FREE quotation call  
Tel: 0800 326 5017  
[www.lawnmaster.co.uk](http://www.lawnmaster.co.uk)



/LawnMasterUK



@LawnMasterUK



/LawnMasterTV

Or just text 'lawn' and your postcode to 60777 and we will call you.

## CHURCH AND VILLAGE ACTIVITIES AND CONTACTS

### **Hambleden Valley Group of Churches**

**Priest-in-Charge:** The Revd. Sue Lepp,  
07930 520562, revdsuelepp@gmail.com

**Associate Priest:** The Revd Sue Morton,  
01491 639286, suemorton131@gmail.com

**Director of Music and Choir:**  
Christine Wells BEM, 01491 571588,  
c@wells.vnworks.net

**Group Treasurer:** David Napier, 01491  
574230, david\_napier@btoopenworld.com

**Group Administrator:** Jenny Neagle, 07769  
599616,  
hambledenvalleyoffice@gmail.com

**Weddings and Blessings:** Paul and Lynda  
Marston-Weston 01494 883188  
hambledenvalleyweddings@gmail.com

**Tea Club:** St. Katharine's, Parmoor,  
Currently suspended

**Barney's Toddler Group:** Frieth Village Hall,  
Currently suspended

**Website:**  
www.hambleden-valley-churches.org.uk

### **Fawley (St Mary the Virgin)**

**Churchwarden:** David Napier,  
01491 574230,  
david\_napier@btoopenworld.com

**Clerk to Fawley Parish Meeting and  
Village Hall booking:**  
David Burton - davidburtn83@hotmail.co.uk

### **Fingest (St Bartholomew)**

**Churchwardens:**  
Brian Barnes, 01494 882613,  
brianbarnes346@gmail.com

Jill Dean, 01491 638678,  
jill@sundawn.uk.com

### **Frieth (St John the Evangelist)**

**Churchwarden:** Judy Hunt, 01494 882227,  
ajh.claypit1@btinternet.com

**Village Hall Bookings:**  
website www.friethvillagehall.org  
email friethvillagehall@gmail.com  
Tel 01494 880737

### **Frieth Natural History Society:**

Alan Gudge, 01494 881464

**Frieth Village Society:** Caroline Walker  
01494 882333

### **Frieth Cricket Club:**

Ben Smiley  
friethcricket@btinternet.com

**Frieth Lunch Club:** meets on last  
Friday of the month at the Yew Tree Pub.

Judy Hunt, 01494 882227  
ajh.claypit1@btinternet.com

**Pilates:** Mondays at 2pm - 3pm. Wednesdays  
at 2pm - 3pm. Lauren Owen  
www.pilat-ease.co.uk

### **Hambleden (St Mary the Virgin)**

#### **Churchwarden:**

Jill Steward 01491 571320  
jillsteward@hambleden.com

#### **Deputy Churchwarden:**

Sharon Smith 01628 487458 sharon-  
smith0505@btinternet.com

**Bell Ringing:** Fri 7.45pm practice, Helen or  
Karen, hambledenbells@mycomputer.email

**Village Hall Bookings:** Jamie Baker,  
01491 410669, www.hambledenvillagehall.org

**Pilates:** Mondays 11 – 12 Fran Presho,  
07951 019594

**Bridge Club:** Fridays 1.30 – 4.30  
Frances Cugnoni, 01491 576409

**Hambleden Social and Sports Club:** Open  
daily from 8 pm Pat Eldridge,  
01491 576067

**Tennis Club:** Heather Symons,  
01491 577344, heathersymons16@hotmail.com

**Tennis Coaching:** Chris Marshall,  
07801 999230, chrismarshall20@hotmail.com

**Yoga:** Monday 7pm-8.30pm  
Debbie Flavell, 01491 414403,  
debby@debbyflavell.com

**Indoor Market:** Hambleden, 2nd Saturday in  
Month (except January) **Circle Dance** Thurs-  
day 7pm – 8.30pm  
Debbie Flavell 01491 414403  
debby@debbyflavell.com

## **Medmenham (St Peter and St Paul)**

### **Churchwarden:**

Vacant. Please contact Rev. Sue Lepp, 07930 520562, revsuelepp@gmail.com

**Village Hall Bookings:** Emma Tentori, 07759 014396

### **Uniformed organisations:**

#### **1st Danesfield Scouts, Cubs and**

**Beavers:** leader Nick Currie, enquiries@danefeldscouts.org.uk

### **Medmenham News:**

medmenhamnews@icloud.com

## **Skirmett**

**Village Hall Bookings:** Mandy Heller, 01491 638355 www.skirmettvillagehall.org

**Tai Chi:** Friday 9.30am - 10.30am.

Contact: junekingsburytaichi@gmail.com

**Hambleden Valley Garden Club:** Meetings

Oct-Mar on first Tuesday each month at Skirmett Village Hall 7.30. Contact Celia Warren, 01491 638691.

## **Turville (St Mary the Virgin)**

### **Church Warden:**

Caroline Sants, 01491 638994  
turvillechurchwardens@gmail.com

### **Deputy Churchwarden:**

Vicky Hollier vickyhollier@aol.com

**Bell Ringing:** Wed practice,

Rachel Wallace, 01494 883025  
rachel@markjwallace.com

### **Pilat-ease Reformer and Matwork Studio.**

Privates & semi-private Pilates classes (weekdays). Lauren Owen  
www.pilat-ease.co.uk

**Sunday School:** Sara Harman, 01491 639211

**Artists' studios:** Turville Studios open the first Sunday of every month 11am-4pm.

Angela Fois turvillestudios@aol.com  
www.turvillestudios.co.uk

## **Turville Northend**

### **Village Hall Bookings:**

David & Susan Faragher 01491 638960 or 07563 903678, davidfaragher@fastmail.fm  
smfaragher@fastmail.fm

**Yoga:** Saturday 8.45-9.45am,  
Tiffany 07785 615583

## **Parish Council Contacts**

**Hambleden:** Parish Clerk Lorna Coldwell 01494 881483, clerk@hambleden.org.uk, www.hambleden.org.uk

**Medmenham:** Parish Clerk Carole Burslem 01494 449215, mpc.clerk@gmail.com

**Turville:** Parish Clerk Lorna Coldwell, 01494 881483, turvilleparishcouncil@gmail.com, www.turvilleparishcouncil.org.uk

**Fawley:** Clerk to Fawley Parish Meeting  
Mr Ross McDonald, 07769 971252  
r.mcdonald2007@yahoo.co.uk

## **Magazine details**

**Editor:** Penny McLeish,

01491 571288,  
hambledenvalleyleditor@gmail.com

**New subscriptions:** Penny McLeish,

01491 571288, penny\_mcleish@hotmail.com

**Advertising Manager:** David Napier,

01491 574230, david\_napier@btopenworld.com

## **Distributors:**

Fawley: Hilary Beck-Burridge, 01491 413171;  
Fingest: Brian Barnes, 01494 882613;  
Frieth: Tony Parkins, 01494 882170;  
Hambleden: Samantha Webb, 01491 414418;  
Medmenham: Jim Tilbury, 01628 487135;  
Mill End: Robert Spicer, 01491 577747;  
Northend: Susie Phillips, 01491639584;  
Elizabeth Arnott, 01491 638337,  
Sarah Evans, 01491 639240;  
Pheasants Hill: Kate Hussey, 01491 576913;  
Skirmett: Bessie Webb, 01491 638574;  
Southend: Valmai Pickett 01491 638523;  
Turville: Christine Massey, 01491 638679;  
Woodend: Helen Balkwell, 01628 471403.

**Postal Distributor:** Stephen Sidders,  
01491 639271 stephensidders@sky.com



# ROWLANDSCAPES

## CREATIVE LANDSCAPE GARDENING

- Patios & paths • Brickwork • Planting & hedging
- Fencing • Driveways • Wildflower meadows
- Lawns • Garden maintenance • Tree surgery
- Woodland management • Agricultural fencing

**Telephone:** 01844 351919 **Mobile:** 07718 257104

**Email:** rowlandscapes@googlemail.com **Website:** www.rowlandscapes.com

Telephone  
01491 574644



Established  
1906

FAMILY RUN INDEPENDENT MEMORIAL MASONS

36 READING ROAD, HENLEY ON THAMES, RG9 1AG

[www.etsheppard.co.uk](http://www.etsheppard.co.uk) [info@etsheppard.co.uk](mailto:info@etsheppard.co.uk)

Private Car Parking

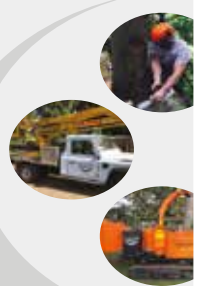
City & Guilds  
NPTC

# TWIGGER TREES



## TOTAL TREE CARE and FOREST MANAGEMENT

- Arboricultural tree climbing
- Dangerous tree removal
- Woodland thinning
- Directional winch felling
- Building site tree clearance
- Eco friendly material disposal
- NPTC qualified and Fully insured
- Competitive pricing with free quotations
- 24/7 EMERGENCY CALL OUT



**T** 07951 274 259 **E** [troy@twiggertrees.co.uk](mailto:troy@twiggertrees.co.uk)

# Peter Freebody & Co

BOATBUILDERS OF THE THAMES EST<sup>®</sup> OVER 300 YEARS



BOATBUILDERS • RESTORERS • BROKERS

TELEPHONE: 01628 824382 WWW.PETERFREEBODY.COM  
THAMES BOATHOUSES, MILL LANE, HURLEY, BERKSHIRE, SL6 5ND



## Your local experts

If you are thinking of selling your home, or would like some advice on the current market in the Hambleden Valley, please contact the Henley office.

Nick Warner  
Office Head, Partner  
nick.warner@knightfrank.com

Matt Davies  
Partner  
matt.davies@knightfrank.com

Knight Frank Henley  
20 Thameside, Henley-on-Thames  
RG9 2LJ, United Kingdom  
01491 818416  
henley@knightfrank.com

[knightfrank.co.uk](http://knightfrank.co.uk)



Advice you  
can trust,  
experience you  
can depend on.

Local people, looking after Local people.

Tel: 01491 411066

[sales@timpeers.com](mailto:sales@timpeers.com) | [lettings@timpeers.com](mailto:lettings@timpeers.com)

Tim Peers Estate Agents | 19 Duke Street  
Henley-on-Thames | Oxfordshire | RG9 1UR



[www.timpeers.com](http://www.timpeers.com)