

# Hambleton VALLEY

## Group Magazine

Annual Subscription £16

£2.00  
Nov 2022



The Hambleton Valley Group of Churches  
"To see our lives and communities transformed by the love of God"

Hambleton  
with Frieth  
& Skirmett  
Fawley  
Findest  
Medmenham  
Turville



Cover: Autumn colour in Fawley. This page: Fawley Harvest Festival Font with grapes from Fawley Vineyard and wild hops from Kate Waddington's hedge, photo Hilary Beck-Burridge.

## In This Issue

Group Letter	1
Group Notes and News	4
Wildlife	8
Hambleden	11
From the Registers	14
Calendar	15
Frieth	17
Fingest	18
Turville	21
Medmenham	22
Classified Advertisements	24
Church and Village Activities and Contacts	26

## Weekday Services

**Wednesday - 9.30am, Zoom**

**Daily Prayer - 10.15am, Holy**

**Communion, Turville**

### Emergencies:

If you are unable to contact the Group  
Priests, please get in touch with your  
churchwarden.

All contributions are welcome, to the  
Editor, Penny McLeish  
hambledenvalleyeditor@gmail.com (please  
note change of email address)  
3 Abbey Cottages, Ferry Lane,  
Medmenham SL7 2HB  
Telephone 01491 571288

Please keep articles within 350 words. Copy  
deadline is 15th of the month.

Printed by Higgs and Co., Henley.  
Tel. 01491 419429

**Dear Friends,**



The Church is on the cusp of the annual season of Remembrance. It begins with All Souls and All Saints (October 30 & 31) when we come together to

remember those whom we love but see no longer. This leads us to Remembrance Sunday (November 13th) where we join with our villages and as a Valley to remember those who served and died for their country.

The British Legion's central theme for 2022 is remembering and commemorating military and civilian service. Service, the act of defending and protecting the nation's democratic freedoms and way of life, is rarely without cost for those who serve. Physical, mental or emotional injury or trauma; the absence of time with family; or the pressures and dangers that come from serving, highlight why the Remembrance of service is so important. ([www.britishlegion.org.uk](http://www.britishlegion.org.uk))

Service is a fitting theme of remembrance given the recent death of Her Majesty Queen Elizabeth and her lifelong commitment to service. The coverage of her life was an extraordinary montage of her unwavering

service throughout her reign. She set a very high bar for all of us.

Closer to home, Pheasant's Hill cemetery is the last resting place of a Hambleden boy who was in the church choir but left it when he joined the RAF. Sgt Frank Oxlade served as a rear gunner on Lancaster bombers. Frank was killed in action on 18th December 1944, aged 19. A wreath and a wooden cross poppy will be on his grave this Remembrance Sunday to mark his ultimate service.

One of the major downsides to the Covid lockdowns was the suspension of all activities; especially volunteering. For some people this was permission to stop volunteering; for others it was the opportunity to start something new. The end result, unfortunately, is that there seems to be fewer people willing to serve their communities and churches. This is not a swipe at anyone (I promise!) but an observation from local experiences but also nationally in the church and secular society.

There is a need to take seriously the call to service whether to King and Country or to the local community and church. My prayer is that we will be inspired by the service of others and moved to action to continue to service our villages.

**Sue Lepp**

---

# HIGGS GROUP

Design • Print • Copying • Office Supplies • Publishing

Publishers of the *Henley Standard*

Printers of the *Hambleden Valley Group Magazine*

Caxton House, 1 Station Road, Henley-on-Thames, Oxon RG9 1AD

T: 01491 419429 E: [henley@higgsgroup.co.uk](mailto:henley@higgsgroup.co.uk) W: [www.higgsprinting.co.uk](http://www.higgsprinting.co.uk)

---





**Opening Hours** Monday - Sunday  
Breakfast: 8 - 10 am    Lunch: 12 - 2.30pm    Dinner: 6 - 9.30pm

**The Stag & Huntsman**  
at Hambleden  
**Tel:** 01491 571227  
[www.thestagandhuntsman.com](http://www.thestagandhuntsman.com)



Come to explore  
& get mucky  
in a home-from-home  
atmosphere

# Turville Nursery, Preschool & Forest School



*Expanding Educational Boundaries*

**Small classes and tailored learning  
for children aged from 0 - 5 years old.**

*We would love to meet you!*

01491 638 071    [turvilleschool@evolution-childcare.co.uk](mailto:turvilleschool@evolution-childcare.co.uk)

# BLOCKED EARS?

Lucinda is a qualified NHS audiologist with over 20 years experience. Now providing a home service for **Earwax Removal**. Let her visit you in your own home to help relieve the symptoms of blocked ears.

Full PPE equipment used to comply with recommended Covid safety measures.



**07795 268866**

**[Lucinda@hearingscreening.co.uk](mailto:Lucinda@hearingscreening.co.uk)**

[facebook.com/blockedear](https://www.facebook.com/blockedear)  
[instagram.com/blocked\\_ear](https://www.instagram.com/blocked_ear)

HCPC registered  
Registered NHS Audiologist  
Professional indemnity insurance  
Hearing Screening and Testing Limited.  
Registered in England No.07810066

**LUCINDA**  
HEARING  
SCREENING  
& TESTING  
**ELLIS**

## GROUP NOTES AND NEWS

### November 2022

#### On the Chilean Trail...

Priests who have been ordained for 10 years or more are able to take a sabbatical; I have now reached that point, having been with you all in the Hambleton Valley since 2012. So, having been granted a three-month sabbatical by the bishop, at the beginning of 2023 I shall be going to Chile for about 6 weeks. Why Chile you may wonder...? Well, Mark and I have degrees in Spanish (we're a little rusty, but we're working on it!) and I have always been curious to see how God would use the language I learnt many years ago; my hope is that a sabbatical in Chile would help to explore this.

In addition, following the Chilean mine collapse in 2010, we hosted the Revd Alf Cooper - then Chaplain to the President of Chile - on his visit to the UK. Alf was travelling to different churches to speak about how God was at work during the 69 days that the miners spent underground and he also invited me to come to Chile one day!

Having volunteered part-time for seven years with the Wycliffe Bible Translators before ordination I learnt much about their amazing work overseas so, while in Chile, I hope to visit the rural churches of the indigenous Mapuche people who already have a Bible in their own language. I also want to explore any creative church services that may be similar to Wild Church.

It is all very exciting and I would really appreciate your prayer support during this time of preparation; I would also love to hear from anyone who has any connections with Chile. I'm aware of some Kenrick family members from Hambleton in Valparaiso and, with help from Peter Steward, we are hoping to try to meet some of the Chilean Kenrick family. Do let me know if there are other connections, or if you can help with any contacts. Mark and I are also looking to practise our Spanish so if you have Chilean or South American friends or family who would be happy to have a chat, please do get in touch with me. Thank you so much!

There will be more Chilean Trail updates in the December magazine!

God bless you.

**Sue Morton**

### Animal Blessing



*photos Mark Morton*

The annual Animal Blessing Service took place on Saturday October 1st. There were dogs of every shape and size including two rescue dogs from Cambodia, Wilbur the whippet, several pugs who arrived in their custom pushchair and a huge contingent of labradors. Youngest participant was probably Lucy the miniature schnauzer aged 13 weeks. But, of course, dogs are not the only pets! There was a tortoise, two guinea pigs, several chickens and various cats that opted to observe proceedings from a safe distance. Harry the parrot has been a very regular member of the congregation for many years and was welcomed as an old friend. There were ponies and a horse who was just passing who couldn't really help but join in.

Rev. Sue Morton and Rev Sue Lepp went round and blessed all 40 animals. It really is a wonderful Turville institution and much enjoyed by everyone. A collection raised £150 for the Anglican Society for the Welfare of Animals. It is always on the first Saturday of October, close to the feast of St Francis on October 4th, so put it in the diary for next year if you've never been!

**Caroline Sants**



**Wild Church in Fawley  
Sunday 9th October, 2022**

Wild Church was held at a very special, indeed spectacular, site high up on the McAlpine estate with splendid views for miles of the surrounding countryside now tinged with autumnal tints. It was

*Continued on page 7*

# Hambleden Village Hall

The perfect venue in the middle of the beautiful village of Hambleden.

Large hall, full kitchen facilities, patio, WiFi, hearing loop, free parking.

Hire by the hour or by session.



For more details and prices contact **Jamie Baker** on **01491 410669** or email: [enquiries@hambledenvillagehall.org](mailto:enquiries@hambledenvillagehall.org) visit [www.hambledenvillagehall.org](http://www.hambledenvillagehall.org)



## HAMBLEDEN VILLAGE STORES & POST OFFICE

Local Artisan Produce - Freshly Ground Coffee & Teas  
Filled Rolls & Toasties - Homemade Sausage Rolls  
Organic Cakes - Fresh Bread & Pastries - Ice Creams  
Seating Area - Post Office



That groovy little store!  
All locally sourced and made with love!

Mon 8am-4pm  
Tues-Sat 8am-5pm  
Sun 8.30am-4pm

58 The Village. Hambleden. [info@hambledenvillagestores.com](mailto:info@hambledenvillagestores.com). 01491 571201

# The Pedestal

Henley-on-Thames' auctioneers with world class expertise, local and international reach we offer a calendar of specialist and single owner auctions as well as our 24/7 online Shop

## UPCOMING AUCTIONS

### Fine Interiors

8 November 2022

### Design For Living

6 December 2022

### Winter Timed Auction

Bidding opens 10 January 2023



### For an auction valuation please contact:

Guy Savill or Sally Stratton MRICS on: +44 (0)1491 522733 or email: [valuations@thepedestal.com](mailto:valuations@thepedestal.com)

### The Pedestal

The Dairy, Stonor Park, Henley-on-Thames, Oxfordshire RG9 6HF

[www.thepedestal.com](http://www.thepedestal.com)

Sold for prices include buyer's premium





last used for the Jubilee beacon chain linked to Windsor Castle over to the west. Though there was a strong wind and a nip in the air up there, it was a beautiful sunny and cloudless afternoon.

The emphasis was on world homelessness so adults and children eagerly constructed a bivouac of branches and greenery sufficiently large to accommodate all the children plus a dog under the guidance of Ray Wilk's military experience.

The children just loved it but at the same time it brought home to the adults that our world is full of homeless people who need our help. Led by the Wild Church choir, we sang two appropriate songs on the same theme. Then to our delight there was tea and delicious cakes.



Thank you Sue and your able assistants for organising a very poignant Wild Church service.

**Alfred Waller**

### **Wild Church Act of Remembrance**

Sunday 13<sup>th</sup> November, **2pm** at Turville Heath  
**(please note earlier time for Winter**

### **Wild Church)**

On 1<sup>st</sup> December 1943 a Spitfire aircraft crashed just off Balhams Lane, sadly killing its 20-year-old pilot, Pilot Officer Peter John Spencer. We invite you to join us at our special Wild Church Remembrance Service to be held at Turville Heath - with kind permission of Lord and Lady Sainsbury - close to where the aircraft came down, as we remember Peter Spencer and others, both known and unknown.

As part of our remembering you will hear how we have managed to contact Peter's family almost 70 years later and, to commemorate this young RAF pilot (weather permitting) there will be a flypast from our local pilot, James Cooling, flying a Piper Cub or PA28 Warrior aircraft. We will also be remembering the soldiers who trained at Turville Heath for the D-Day landings. Everyone is warmly welcome.

Please bring a fold up chair to sit on and do dress for the weather.

Directions for the venue and parking will be sent out via email.

To get in touch with one of the Wild Church Team please contact: Revd Sue Morton 01491 639286/07808 517347 or suemorton131@gmail.com; Mary Campbell grandma.marycampbell@googlemail.com; Mardi Wilkins mardi43@btinternet.com

### **Future Wild Church**

**Sunday 11th December 2pm:** Wild Nativity  
- Northend Common

**Christmas Eve 11.30pm** - Wild Midnight  
Mass, Turville Churchyard

### **Community Matters Update**

*Barbara Ewing, from Community Matters in Lane End, has been so grateful on behalf of the families for the donations they have received from the Hambleden Valley over the summer and beyond and has sent us this update, **Sue Morton***

In October we have given some amounts of money to help a few of our 25 foodbank families. The money was needed for things such as petrol to take children to school or to go to work, help with paying utility bills, paying for someone's phone that has been cut off.

# WILDLIFE

We also helped a young mum who has just been offered her “dream job” working part-time at a local school for autistic children. Even though this lady’s husband works full time, his salary is low, they struggle to make basic ends meet, and she needed some working clothes, such as joggers, sweat shirts, etc to do this new job. We gave her cash to purchase items from ASDA.

Another couple who has a severely autistic teenage son badly needed some help with buying on-line disposable sanitary underpants for this boy who neither speaks nor has any control over his bodily functions. Of course, they are given a certain amount of these underpants from the NHS but never enough. Sixty of these pants cost £46 and he uses 3-4 a day.

Sadly, our families are more in need now than ever before. We often see tears at the fortnightly foodbank and many of the families do not have cars and we have been driving them to medical appointments when required.

## Name-Dropping

“I’ve just been rescued by Deep Purple!” This was not an emotional rescue effected by profound and apposite song lyrics, but a bit of famous muscle kindly getting my mother’s car out of a ditch at Mill End.

“I’ve just been winked at by Leslie Philips!” seemed less exciting as this was probably his usual greeting to anyone of the opposite sex, whether or not (not, in my mother’s case) they had been introduced. She’d been to Turville where they were filming.

The original Hatchet Wood, home of budgerigar “Tiny Bird” (*March issue*), was demolished by Sir Joseph Lockwood, head of EMI, and replaced with six low, linked pavilions acclaimed in architecture magazines (though not in the Valley). It had a carpet in autumn colours made to look like a woodland floor, with woollen mounds in high relief for moss and boulders. The Beatles often went there and will have walked on - or tripped over - it.

The M40 is approached from the Hambleton Valley via John Hall Way, named after a former Wycombe MP. I once sat next to him at lunch at Rebecca West’s house in Ibstone. He can’t have enjoyed being put next to a speechless teenager distracted by her hostess adjusting her wig as though it were a hat.

**Caroline Davis**

# WILDLIFE

## In praise of natural light

For millions of years, life on our planet has revolved around the predictability of day following night. Our circadian rhythm is set daily by blue light waves emitting from sunlight, starting with those first rays at dawn gently awakening our brains, stirring us into our arrangements for the day ahead and perhaps peaking at midday. During Spring and Summer, natural light is plentiful and we are as busy as bees. Nature around us flourishes; seeds germinate, trees burst into leaf, plants flower into an abundance of colours and blades of grass grow at a prodigious rate. Wild creatures of all sizes intent on procreation, are making the most of the sunlight and warmth crucial for successfully nourishing the next generation in one way or another. In Autumn temperatures drop, daylight hours dwindle and nature pauses. We would benefit from pausing too except we don’t because artificial light enables us to prolong our working days. Artificial light is a mixed blessing and the emergence of energy efficient LED lights while good in one sense, has made matters much worse for all living creatures after sunset, humans included. The issue is the levels of blue light in LED bulbs is greater than in halogen or candle light. These blue light waves, a natural characteristic of sunlight, trick our brains into thinking it’s still daytime and disrupt our preparation for bedtime. As the sun descends below the horizon, our incredible brains start secreting melatonin, ultimately leading us towards a night of welcome recuperative rest during which our bodies heal. It’s worth noting that light penetrates closed eyelids through photosensitive cells therefore complete darkness equates to deeper and better sleep. We would benefit from trying harder to use daylight hours to complete tasks required to make our impression on the world and synchronise our life style more with the fading light at dusk. Mammals, amphibians, insects, birds and plants are also affected by artificial lights. Amphibians appear to stop their nocturnal croaking which disrupts reproduction patterns, female glow worms’ flashing posteriors can’t be seen by the males flying past and robins amongst other songbirds are unable to sleep and often sing through the night. Prey species need dark for cover so nocturnal ecology is suffering in areas

Continued on page 11

*For the perfect relationship...*



Savills Henley  
01491 843 000

[savills.co.uk](http://savills.co.uk)

don't rely on luck, rely on



## Graham Blake soft furnishing

- Loose Covers • Curtains •
- Re-Upholstery • Tracks and Poles •

TEN YEAR GUARANTEE

For personal, helpful service, please call

Tel: 01844 261769 • Mob: 0780 1182 400

grahamblake123@btconnect.com

www.grahamblake.com

## Midway Chimney Sweeps and Linings

*Chimney Sweeping and Boiler Cleaning*

Member of National Association of Chimney Sweeps

Recommended by Coal, S.F.A.S. and Gas Board

ESTABLISHED OVER 30 YEARS

TELEPHONE: HIGH WYCOMBE (01494) 564321

Mobile 07850 196616

## G M PAGE FURNITURE RESTORATION

**ALL ASPECTS OF FURNITURE RESTORATION  
UNDERTAKEN, BOTH ANTIQUE AND MODERN**

DINING TABLES REFINISHED  
FRENCH POLISHING AND MODERN FINISHES  
RE-UPHOLSTERY  
CANE AND RUSH WORK  
SPECIALIST VENEER REPAIRS  
DESKS RE-LEATHERED

INSURANCE WORK UNDERTAKEN

TELEPHONE: 01494 511234  
MOBILE: 07754533128  
EMAIL: page1830@aol.com  
WEBSITE: gmpagerestoration.co.uk



**EST. 1988**



illuminated all night. A leap in electricity prices may hopefully bring a reduction in light pollution but we can help ourselves and our wildlife by making the most of every valuable minute of natural daylight and dimming our environments inside and out after sunset.

**Sarah Ronan**

## HAMBLEDEN

### In appreciation of the Hambleden Bell Ringers



Three cheers for the bell ringers! Together they have contributed so much by enhancing life in the community of Hambleden and beyond. The sound of the church bells ringing before a church service, after weddings, occasionally after a funeral and even more rarely, marking significant national events, is something that most people appreciate but have no knowledge of what is involved in making it happen. A lot goes on behind the scenes: training new ringers, weekly practice evenings, maintenance of the bells, cleaning the bell chamber, co-ordinating each team for public occasions etc.

And so, a party was held in the Sports Club on the evening of Friday 23rd September, which was planned to celebrate the end of a busy summer of ringing for 20 weddings. In the event, it also marked the conclusion of much extra ringing following the death of Queen Elizabeth II and the beginning of the reign of Charles III; a toast to our dear friend, Maureen Cleary and to celebrate a significant birthday of star ringer, Gay.

The bell ringing band is made up of 12 committed ringers of all ages. There is a ring of 8 bells, although if 8 ringers are not available, only 6 bells

are used. The tower captain, Helen, has worked brilliantly to put together each team needed for the 20 weddings and then more recently, co-ordinated the ringing protocol following the announcement of the death of the Queen on 8th September.

Following the announcement, Helen's husband, Mark, quickly secured the purpose made leather muffles onto the clappers of bells 4 and 5, ready for the band to toll these from 12 noon until 12.50 on Friday 9th September. Several people gathered outside the church porch to hear the ringing, before joining with others in the church for prayers led by the Revd Sue Lepp, for the Queen, our nation, and for the new King.

Their next task was to prepare for the ringing following the proclamation of Charles being declared King Charles III. The muffles were removed, and Helen worked hard on Sunday morning to ring each of the bells into the 'up' position ahead of 20 minutes of joyous ringing shortly before 5pm on Sunday 10th September, while many people were in the churchyard enjoying church teas.

The following week provided a short rest from ringing until Monday 19th September, the day of the State Funeral. Few of us would realise that for this to happen, the bells had to be rung down (into the safe position) so that muffles could be placed on each clapper, and then rung up (into the ringing position), ready for 10am on the day.

Seven ringers assembled in the ringing room, and on the dot of 10am the ringing started. There were several periods of 10 minutes of ringing, and Daniel skilfully called the team into various changes: Queens, Kings, Princes and Princesses. Outside, anyone hearing this ringing would mostly have been aware of the slow tolling of the unmuffled 12th stroke in each round. In between the 10-minute periods, most of the band took a rest while a ringer tolled one muffled bell 96 times. Just before 11am, the last of these single tolling sessions ended in time for the church clock to strike the hour.

On the 23rd, the bells rang again in joyful memory of one of our longest serving bell ringers, Maureen Cleary, following a service of thanksgiving.

And so, the busy summer of weddings ended with an even busier time prompted by the death of Her

Majesty. The ringers have all said that they found it a privilege to take part in it, and there have been many positive comments from local residents. Thank you, ringers!

**Sarah Helweg-Larsen**

## Hambleton Harvest

Harvest Festival was held at Hambleton Church



in September, with the traditional ceremony of carrying in the local wheat, Harvest hymns and sermon by Revd Andrew Storch. The wheat was grown at Rockwell End and donated by Isobel and Chris Connell. We are very appreciative of this. They, their sons, and Tom Lumley with Angus Armstrong, carried it into the church in the traditional Hambleton ceremony.

Many from the congregation enjoyed a buffet of refreshments, and talking, in the churchyard afterwards.

**Jill Steward**

## Hambleton Cinema

Come and watch the endearing film *The Duke*, rating 12, starring Jim Broadbent and Helen Mirren, with us on Saturday 12th November. In 1961, a 60-year-old taxi driver steals Goya's portrait of the Duke of Wellington from the National Gallery in London. He sends ransom notes saying that he will return the painting if the government invests more in care for the elderly. Our wonderful new built-in screen, 4K HD projector and 5.1 surround sound gives a fabulous viewing experience!

Watch the trailer <https://www.youtube.com/watch?v=2B2bxcnt4S4>

[watch?v=2B2bxcnt4S4](https://www.youtube.com/watch?v=2B2bxcnt4S4)

Doors open 7pm, programme begins 8pm. Tickets £8 each can be bought from [www.hambletoncinema.co.uk](http://www.hambletoncinema.co.uk) and from Hambleton Village Stores. There will be a bar selling soft drinks, wine, beer and tempting delicious cinema snacks!

In aid of raising funds for Hambleton Village Hall Registered Charity 30027

**Hambleton Cinema Team**



## Quiz 25th November

Tickets are now on sale in Hambleton Stores for the annual Village Hall Quiz to be held on November 25th at 7.30pm sharp. A light supper will be provided.

An absolute bargain at **£12** a head! Note: small price increase on last year in line with government guidelines!

**Chris Whitehead**

# Absolutely Fabulous

CARPET, RUGS, UPHOLSTERY & STONE FLOOR CLEANING

EXTENDING THE LIFE OF YOUR CARPETS, RUGS, UPHOLSTERY & STONE FLOORS

**The most thorough cleaning you've ever seen... or it's FREE.**

For Absolutely Fabulous cleaning of your carpets, upholstery, rugs or stone floors, give us a call today **01491 540005**



We have our own dedicated rug wash facility  
**Free collection and delivery of all rugs.**



All floor tiles and grout cleaned, full restoration of  
all natural stone floors (incl. marble floor polishing).



"Excellent time keeping, very courteous, excellent workmanship" ★★★★★

"Honest, friendly, efficient and reliable" ★★★★★

"Thorough, prompt, friendly, knowledgeable" ★★★★★

"I would definitely recommend this company to all my friends and family." ★★★★★

[www.abfab.uk.com](http://www.abfab.uk.com)



**Holiday Villa to Let**  
[www.corfubeachhouse.co.uk](http://www.corfubeachhouse.co.uk)





# CALENDAR FOR NOVEMBER 2022

## Pattern of Worship November 2022

Please see below for Sunday services. There will also be Zoom services at 9:30am and the 10.15am midweek Holy Communion at Turville on Wednesdays. Please refer to our website for the most up-to-date information or contact Jenny Neagle on [hambledenvalleyadmin@gmail.com](mailto:hambledenvalleyadmin@gmail.com) (07769 599616).

[www.hambleden-valley-churches.org.uk](http://www.hambleden-valley-churches.org.uk)

## Sunday Services

	Fawley	Fingest	Frieth	Hambleden	Medmenham	Turville	Zoom
30th Oct			8am, BCP Holy Communion		11am Holy Communion	3pm All Souls Service	
6th Nov	10am Group Service						
13th Nov Remembrance		9am Remembrance Prayers	9am Remembrance Service	10.50am Remembrance Service		3pm Wild Church, Turville Heath	
20th Nov			9am Holy Communion/Zoom	8am BCP Holy Communion 10am Lay-led Morning Worship			9am
27th Nov Advent 1	11am Holy Communion			11am Holy Communion 6pm Advent Candlelit Service		9.30am Holy Communion	9am
4th Dec Advent 2			10am, Group Service				

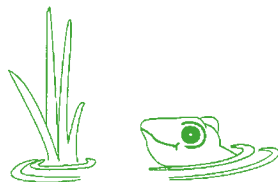
# The Frog at Skirmett, Henley-on-Thames

(Closed Sunday Evening — November to May)

Non-smoking Restaurant with an unusual selection of New English, French and Mediterranean style food.

Food is served for LUNCH and DINNER 7 days a week, May to November

Family room for children. En-suite accommodation. 36 seat function room



**Tel: 01491 638996 Fax: 01491 638045**

Gerrards Cross  
38 Oak End Way  
Tel: 01753 891892

Slough Slough  
273 Farnham Road  
Tel: 01753 535556

High Wycombe  
891 London Road  
Tel: 01494 472572

Marlow  
21 -23 Little Marlow Road  
Tel: 01628 898866

Beaconsfield  
32 Gregories Road  
Tel: 01494 685000

Traditional, Alternative & Green Funerals  
Pre -Payment Plans ~ Stonemasonry ~ Floristry



6 Generations of Service in the Community  
24 Hour Service

## ARNOLD FUNERAL SERVICE INDEPENDENT FAMILY FUNERAL DIRECTORS



## COAT & TAILS

All breeds of Dogs and Cats • Long Coats a speciality  
Collection or home service by arrangement

MAIDENHEAD-MARLOW-HENLEY  
PROFESSIONAL & CARING  
With 35 Years' Experience  
Clipping/Hand Stripping

Rotten Row Farm • Hambleden  
Henley-on-Thames • Oxon  
Tel: 01491 636140

[www.coatandtails-Hambleden.co.uk](http://www.coatandtails-Hambleden.co.uk)

## Whatever you want to store...

...for whatever reason - house sale and purchase not coinciding, travelling, house building work, paperwork overload or even "de-cluttering" to sell your house more quickly - we offer a friendly and flexible local service.

With competitive rates, secure storage and hassle free 24/7 access, contact us now!



**01189 404163** [www.barn-store.co.uk](http://www.barn-store.co.uk)

**Christmas Concert**



The University College London Chamber Choir will give a festive concert of Christmas music in Hambleden church on Saturday, 3rd December at 7pm. Tickets are £15 and can be reserved in advance by emailing: northendconcerts@gmail.com or will be available on the door (subject to availability). Further information: www.northendconcerts.co.uk

**Phil Cashian**

**FRIETH**

**Frieth Harvest Festival**



Frieth's Harvest Festival was a great success, the much talented Sue Morton made pizzas with the children, they read prayers and bible passages and we all enjoyed tea, cake and pizza afterwards. A collection for the One Can Trust made £113 and we were also able to donate lots of provisions. A very happy afternoon.



**Hambleden Village Hall  
Saturday 10th December  
1.00pm – 5.00pm**

Come and get in the festive spirit. See over 18 Christmas trees in one room, each decorated by a local family, school, club or company. Sample the seasonal refreshments and enjoy some live Yuletide entertainment.

All in aid of raising funds for Hambleden Village Hall

Registered Charity No: 3100275



**Free Entry**  
Mulled Wine and Mince Pies, Teas and Cakes, plus Christmas carols and entertainment for all the family



**Judy Hunt**

**Frieth School**

I can't believe we are already nearly at the end of the first half term! It's been a great start to the school year and lots more excitement to come!

We had a wonderful Harvest Service and it was so lovely to welcome in so many parents. Following tradition, all the classes gave performances and our Year 6 children led the service. How lucky we are to have this beautiful church on our doorstep.

## FINGEST



Kites Class had a fantastic afternoon taking part in a rugby festival at John Hampden School. Great to see so much determination, skill, teamwork and sportsmanship on show. Well done to all the children for letting their light shine!



Massive thank you to Jolyon Marshall who came in to talk to the children about the restoration of the Frieth Village Hall Clock and its link to Big Ben. It's so important the children learn about local history and they were fascinated throughout.

Our sports fixtures start next week with two home matches. On Thursday our football team will host

Radnage and on Friday our netball team will play Holy Trinity Cookham. I'm already looking forward to enjoying a coffee and biscuit on the sideline and cheering the teams on!



**Martin Gosling**  
Headteacher

## FINGEST

### Fingest Past

**Church Fetes (1)** – Churches, in the Church of England, under the Churches Measure Act 1955, are required to undergo an inspection of the state of repair of a church building every five years: the Quinquennial Inspection. The inspection is carried out by an approved architect. The cost of any repairs falls on the parishioners with the Parochial Church Council having the task of raising the money to pay for the work to be carried out, as well as the week to week running costs of the church. Repair costs are expensive, especially for an ancient Grade I listed building such as Fingest Church with its late eleventh century Norman tower. Consequently,

Continued on page 21



# Peter the Painter

T/A Ideal Decorations

## Interior and Exterior Decoration

**32 Green Dragon Lane, Flackwell Heath, Bucks HP10 9JZ**

**Telephone: 01628 527865 Mobile: 07976 513652**

**[peterthepainter@live.co.uk](mailto:peterthepainter@live.co.uk)**



# T&S

Tomalin & Son

## A Family Run Independent Funeral Service

24 hours service | Private client parking | Private chapel of rest  
Free home visits | Pre-paid funeral plans | Full written estimate

### Tel: (01491) 573370

[www.tomalins.co.uk](http://www.tomalins.co.uk)    [office@tomalins.co.uk](mailto:office@tomalins.co.uk)  
Anderson House, 38 Reading Road, Henley-On-Thames, RG9 1AG



Golden  
Charter  
Funeral  
Plans

## J. A. BRAKSPEAR PLUMBING & HEATING LTD

TEL/FAX: 01491 575428

E-MAIL: [JOHNBRAKSPEAR@GMAIL.COM](mailto:JOHNBRAKSPEAR@GMAIL.COM)



Registered  
Business

**Bathroom renovations • Boilers Replaced  
Heating system Maintenance and Installation  
Free Estimates • No Job Too Small**



## Skirmett Village Hall

A bright lovely hall with fully equipped kitchen  
in the Hambleden Valley available for  
meetings, workshops classes and parties.

Website: [Skirmettvillagehall.org](http://Skirmettvillagehall.org). For bookings  
Contact Mandy Heller 01491638355

# ▲▲ D. J. Macleod ▲▲

Tree Surgery, Felling, Planting and Hedge Cutting

Fencing and Gates Supplied and Erected

**Quality Firewood for Sale**

Producer and Supplier of Wood Chips

Cedar Cottage, Parmoor, Henley-on-Thames RG9 6NN

Mobile 07850 724023

### 01494 882901

[www.donlogs.com](http://www.donlogs.com)

e-mail: [donlogs@hotmail.com](mailto:donlogs@hotmail.com)



# Danesfield Gardens

Henley Road, Medmenham, Near Marlow, SL7 2EU

Your local nursery for bedding and patio plants for spring and autumn  
Baskets filled, compost, chimney pots and ornaments

Phone: 01628 484509

Betty Ryan  
and Isabel McCrindle




**Denning Montessori Nursery and Forest School - Fawley**  
[www.DenningMontessoriSchool.com](http://www.DenningMontessoriSchool.com) - Tel: Jenny 07982 620710



*J & D Mooney*  
 YOUR "CLEAN" RELIABLE QUALITY  
 PAINTER & DECORATORS  
 — DOMESTIC & COMMERCIAL —  
*Family run business for over 30 years!*  
 Telephone 0118 934 4230  
 Mobile: 07961 366535  
 darrenjomooney@hotmail.com  
 henleyschicdecor.co.uk

- N.V.Q. Qualified
- Many references available in and around Henley
- No job too small!!!
- Interior and Exterior work done!
- Free Competitive Quotes! — No Obligation
- Prompt and Friendly Service!
- C.I.S. Registered Business
- Full Public Liability Insurance
- Specialist in Rural run down property



# W. J. Webb & Son Ltd.

(Established 1968)

**BUILDERS and DECORATORS**  
**CONVERSIONS and GENERAL REPAIRS**

Hambleden, Henley-on-Thames  
 Tel: 01491 571366  
 e-mail: [wjwebbandson@googlemail.com](mailto:wjwebbandson@googlemail.com)

*“There is only one other church like this in England . . . its tower is a thousand years old. Please help us to maintain it”*



**SOUVENIR PROGRAMME**  
of the FETE in aid of  
THE PARISH CHURCH OF ST. BARTHOLOMEW, FINGEST  
SATURDAY, JULY 196, 1952. One Shilling

\*\*\*\*\*  
\* ALL THE FUN \*  
\* OF THE FETE \*  
\*  
\* OPENING \*  
\* CEREMONY \*  
\* BY \*  
\* PAUL TEMPLE \*  
\*  
\* Children's Fancy \*  
\* Dress Parade \*  
\* Bowling for a Pig \*  
\* Hoopla \*  
\* White Elephant Stall \*  
\* Darts \*  
\* Country Produce \*  
\* Pony Rides \*  
\* Fancy Stall \*  
\* Hammering the Nail \*  
\* Bran Tubs \*  
\* DANCING IN \*  
\* THE EVENING \*  
\*\*\*\*\*

substantial fund-raising efforts are required to meet the cost of repairs. Fetes were held in 1952, 1966, 1989 and 1991 on the field behind the church; the Cricket Pitch field also known as “The Lawn” in the 1800s. In the early 1950s the church tower was in need of repair. To raise funds for the repairs, a fete was held on Saturday 19th July, 1952. It was opened by “Paul Temple” from the radio series; for those of us who remember, the introductory and closing music was Coronation Scot. The fete offered the usual attractions including pony rides, a children’s fancy dress parade, hoopla, white elephant stall, darts,

hammering the nail, bran tubs and in those days of rationing bowling for pig. There was also dancing in the evening.

The following is from the programme, “The roof of the tower is in need of urgent repair. For nearly a thousand years the Church has withstood time, tempest and battle. Now the need to restore and reinforce much of the fabric is dire and compelling. St. Bartholomew’s was built not long after the year A.D. 1100. Help us to maintain it now, in 1952”

**Don Boreham**

**TURVILLE**

**Garsington Community Opera - Dalia**



photo © Craig Fuller

What might it be like to live in, or to have to flee from a war zone? Could it be possible, after enduring the unimaginable and losing everything – loved ones, home, community – to begin again in a new land and rediscover value, connection and purpose there? For Roxanna Panufnik and Jessica Duchon (composer and librettist respectively of ‘Dalia’, a new ‘community opera’ commissioned by Garsington Opera to feature as part of its main season in July 2022) the answer seems to be a cautiously optimistic “Yes”. Whether or not a life so shattered can truly succeed in repairing itself and flourishing, though, may hang in no small part on the reception the new human family - both immediate and extended - is willing to offer to the devastated ‘outsider’ and this, together with the capacity of sport and teamwork to raise individuals above petty prejudices, is one of the themes confronted and explored in ‘Dalia’, which takes its name from the protagonist, a young Syrian refugee girl who, after enduring sometimes bitter

## MEDMENHAM

hostility and mistrust within her new community in England, is eventually accepted and recognised by most as a fellow human-being and source of enrichment to many.

Following the hugely successful Road Rage (2013) and Silver Birch (2017 – also created by Panufnik and Duchen) this was Garsington Opera's third newly commissioned 'community opera' in which, under the expert guidance of and side-by-side with top professionals, amateurs of all ages had the chance to contribute musically and dramatically to the unfolding of an important, deeply thought-provoking and topical story. From the first breathless rehearsal amidst a roomful of strangers (all surely no less nervous than oneself!), to the culmination of the adventure in performance amongst fellows (as they had quickly become) on the wonderful stage at Wormsley, the entire shared experience of endeavour, commitment and achievement was truly unforgettable.

For those of us fortunate enough to have experienced at first hand the warmth, support and inclusiveness, as well as imagination and professionalism of Garsington Opera's Learning and Participation team, the fact that such an ongoing programme should be situated at Wormsley - almost on our Hambleden Valley doorsteps! – seems scarcely credible: a near-unbelievable piece of good fortune. Does this sound like a plug? – It is! - And here's a link to prove it: [www.garsingtonopera.org/get-involved!](http://www.garsingtonopera.org/get-involved!) Expert guidance free of charge for all ages and backgrounds within an ongoing programme stiff with opportunities to learn, grow and contribute... What's not to like about that?!

**Kate Hussey**

### Artists at Turville Studios

Did you know..... there is a high-quality contemporary group of Art Studios in the valley?

The Artists at Turville Studios are a group of professional artists, working in a variety of media - painting, printing, photography, ceramics and more.

They open to the public every first Sunday of the month from 11-4pm but are also open by appointment and at other times in the week.



Wander down to the Bull & Butcher in Turville and you will find them there working, showing and selling their artwork.

On November 19th and 20th they will be having an Open Weekend from 11-4pm each day. This is a wonderful opportunity to browse and buy some unique and original art and cards from local Hambleden Valley artists in the run up to Christmas, with prices to suit all pockets, refreshments and a raffle. Parking and disabled access available.

For more information we are at [www.turvillestudios.co.uk](http://www.turvillestudios.co.uk)

We look forward to seeing you.

**AATS**

## MEDMENHAM

### Article 5 – In the '20s

Fabulously wealthy, Bendir ran the Abbey in style through the interwar period. Photographs of the Abbey gardens in the late 1920s show well-manicured, formal gardens.

But the Bendirs were often elsewhere, Mr Bendir in London where his business was thriving, and Mrs Bendir at their property in southern France. But the Abbey was well tended and offered employment during the great depression of the 20s.

The Guttridge family increased further in 1925 with the birth of the youngest, Arthur, now a spritely 97-year-old to whom I still speak quite regularly.

The Bendir family also increased in number with the birth of Janine.

School for the Guttridges was up in the village school, where education was in the hands of the Wests, mother and daughter

But children were also marrying and leaving home, Bob and Hilda in 1927, Joe in 1929.





*Harold in the Abbey grounds c 1930*

Many of the boys were apprenticed at the Abbey gardens, my father amongst them.

In the gardens, under Head Gardener Mr Clark, the old order remained in place. A story Dad told me sticks in my mind. He suffered from back problems when younger. One day he was knelt down, weeding, when Mr Clark accosted him.

“Why are you kneeling Guttridge?” Clark asked. To which Dad replied “because my back hurts sir”. Clark’s riposte? “Your back’s meant to b--dy hurt when you’re weeding, Guttridge, now stand up!”. But Mr Clarke came to value him, as witnessed by Dad’s references from the Abbey.

Family life for the Guttridges continued as before. My grandmother, Emily, used to take the bus to Henley each week to do the family shopping. And there was the very occasional trip to the seaside,



by charabanc.

*Medmenham Abbey*

But as the 1920s gave way to the ‘30s, the motor car started to appear in the village. Even young Bob Guttridge could afford a motorbike. And the old social order was giving way. Mrs Hornby Lewis of Danesfield died in 1930, Lord Devonport in 1934

It was in some ways the end of an era. The autocratic Devonport was replaced at Wittingham by the Westons, remembered by my uncle Arthur, who was at Borlase school with the sons, as an easygoing, socially approachable Canadian family.



## Turville Northend Village Hall

Large Hall, Committee Room, Kitchen, Private Terrace, Parking.  
Available for: Meetings, Workshops, Parties, Weddings, Classes.

For further information & bookings visit: [www.thevillagehall.co.uk](http://www.thevillagehall.co.uk)  
Turville Northend Village Hall, Northend, Henley-on-Thames, Oxfordshire RG9 6LJ

## ADVERTISEMENTS

**Corfu** — comfortable sea-edge villa in Durrell country to let privately. Between Kassiope and St Stefanos. Direct BA flights from LHR Ter.5. [www.corfubeach-house.co.uk](http://www.corfubeach-house.co.uk) Armstrong 01491 571324

### North Cornwall,

**Harlyn Bay** Padstow 4 miles. Family cottage with garden. Sleeps 6. Quiet lane with footpath leading to huge sandy beach. Excellent surfing, walking, golf. Very reasonable rents. Beck-Burridge 01491 413171.

### Computer Problems?

Local help in fixing problems, selecting systems and personal tuition including email/ internet. Contact Matt on 01491 575998 or 07821 592928.

### Mulberry Flooring.

Specialists in wood floor restoration. Please call for free quote 01494 535348.

**Rock, North Cornwall.** Old cottage by the beach, newly refurbished, sleeps 8. Available for holiday lets. Contact Mandy Heller on 01491 638355 or [johnheller@poyonnattscottage.com](mailto:johnheller@poyonnattscottage.com)

**Salcombe, South Devon.** Three bedroom cottage, recent refurb, stunning estuary views, quiet & close to town centre, sleeps six, easy access beaches/walks, holiday lets throughout year, 01491 577344

**The Pet Feeders** - We look after your pets when you can't. Local firm, insured/CRB checked. [www.thepetfeeders.com](http://www.thepetfeeders.com). Mobile: 0753 100 7419. Email: [info@thepetfeeders.com](mailto:info@thepetfeeders.com)

**Valencia** Large Luxury Family Villa with Pool and Tennis Court. 15 mins from the City Centre, 10 mins from the Airport. Sleeps 14 comfortably, 6 bedrooms / 4 bathrooms. Visit [www.homeaway.co.uk/p1029900](http://www.homeaway.co.uk/p1029900) to see our reviews. Contact Virginia or Andy Coombes for more information on 01491639419/ 07860847256

**Snowdonian Cottage.** Cosy and comfortable traditional 3 bed stone cottages sleeps 6, wood burner and wi-fi, in coastal village, Llwyngwrl on the Welsh Coastal Path. An ideal base to enjoy and explore 'the most dramatic and alluring region in Wales'. Beaches, mountains, River Mawdach and Dyfi

Estuaries, lakes and so much more. Dog Friendly. Contact Euan McCrindle 07713 952495 / 01628 475644 or email [euancrindle@hotmail.com](mailto:euancrindle@hotmail.com) for more information and detail.

**Music Teacher!** - Qualified musician offering great value Piano and Vocal lessons. 5 Years Experience, Fun and engaging lessons for all ages and abilities. Contact Sasha Steventon (BMus) on 07740 289467 or [bluemusic@outlook.com](mailto:bluemusic@outlook.com) [www.bluemusic.co.uk](http://www.bluemusic.co.uk)

**Isle of Mull.** The Bothy sleeps 4, available for weekly holiday lets, and The Studio sleeps 2, available for 2-5 nights. An ideal peaceful location for exploring this beautiful island. Wonderful panoramic views, walks, beaches, wildlife. Visit [www.thesmithymull.co.uk](http://www.thesmithymull.co.uk) for more information.

**Dairy Lane Dog Grooming** Hand-stripping, Clipping, Scissoring, Bathing, Nails. Louise McTeague, 4 Dairy Lane, Hambleden, Henley-on-Thames, Oxon RG9 3AS Tel 01491 579442 Member of British Dog Groomers Association and Pet Care Trust



## HAMBLEDEN SPORTS & SOCIAL CLUB



### Have you ever ventured inside the Hambleden Social Club?

**Hambleden Sports and Social Club** is a community organisation providing sporting facilities on the Dene in Hambleden, as well as a Social Club in the village centre. The current sporting sections are cricket, tennis, football and pool.

Take a look at our website at [hambledenssc.co.uk](http://hambledenssc.co.uk) for more information.

The **Social Club** is situated in the centre of Hambleden Village, to the left of the Post Office/Shop. The club is a members club which allows us to provide alcohol and soft drinks at low prices, for consumption by our members and their guests. The Social Club offers fruit machines, pool table, darts, TV, comfortable seating and a friendly atmosphere!

**Membership:-** £25 per year or £13 for OAPs and Students

**Opening hours:-** 8pm - 11pm (Tuesday – Saturday)

You can also hire the Social Club for meetings during the day and functions in the evening. Please contact **Pat Eldridge 01491 576067** for more information.

***We are lucky to have this facility in our wonderful valley, please do pop in and take a look for yourself!***

## Protecting your wealth and loved ones

- Everyone should have a Will, but 2 out of 3 people have not yet made one, and those that **have may not have the correct Will** in place.
- If you own a business or a share of a business, your spouse/partner and children may not necessarily inherit your share.
- An estimated 70,000 people per year have to sell their homes to **pay for care**.
- Effective planning can also protect the **inheritance of future generations** from **divorce or separation** settlements.
- By setting up **lasting powers of attorney** you can rest assured that your finances and personal welfare are in safe hands.

**In association with Countrywide Tax & Trust Corporation Limited, I provide a professional, tailor-made service to help individuals to safeguard assets, regardless of their value and protect their loved ones.**

My decision to get involved in Wills and Estate Planning was a result of personal experience. I learnt first-hand how unpreparedness adds to the stress of dealing with long-term illness and death. Get in touch for advice that can guide you to make informed decisions that suit your needs.

**Visit [www.personalestateplanning.co.uk](http://www.personalestateplanning.co.uk) for further information.**

Judy Bonfanti, FCCA, STEP Affiliate

[judy.bonfanti@hotmail.com](mailto:judy.bonfanti@hotmail.com)

0781 0642 505

# Lawn Master®

professional lawn care

Your lawn, our  
expertise...  
*perfect!*



A Corporate Member

IOG



UKALA  
Certificate Number 8302  
(2010)

SEE RESULTS IN JUST  
**10 DAYS**

For a FREE quotation call  
Tel: 0800 326 5017  
[www.lawnmaster.co.uk](http://www.lawnmaster.co.uk)



/LawnMasterUK



@LawnMasterUK



YouTube

Or just text 'lawn' and your postcode to 60777 and we will call you.

/LawnMasterTV

## CHURCH AND VILLAGE ACTIVITIES AND CONTACTS

### **Hambleden Valley Group of Churches**

**Priest-in-Charge:** The Revd. Sue Lepp,  
07930 520562, revdsuelepp@gmail.com

**Associate Priest:** The Revd Sue Morton,  
01491 639286, suemorton131@gmail.com

**Director of Music and Choir:**  
Christine Wells BEM, 01491 571588,  
c@wells.vnworks.net

**Group Treasurer:** David Napier, 01491  
574230, david\_napier@btoopenworld.com

**Group Administrator:** Jenny Neagle, 07769  
599616,  
hambledenvalleyoffice@gmail.com

**Weddings and Blessings:** Jenny Neagle,  
07769 599616  
hambledenvalleyweddings@gmail.com

**Tea Club:** St. Katharine's, Parmoor,  
Currently suspended

**Barney's Toddler Group:** Frieth Village Hall,  
Currently suspended

**Website:**  
www.hambleden-valley-churches.org.uk

### **Fawley (St Mary the Virgin)**

**Churchwarden:** David Napier,  
01491 574230,  
david\_napier@btoopenworld.com

**Clerk to Fawley Parish Meeting and  
Village Hall booking:**  
David Burton - davidburtn83@hotmail.co.uk

### **Fingest (St Bartholomew)**

**Churchwardens:**  
Brian Barnes, 01494 882613,  
brianbarnes346@gmail.com

Jill Dean, 01491 638678,  
jill@sundawn.uk.com

### **Frieth (St John the Evangelist)**

**Churchwarden:** Judy Hunt, 01494 882227,  
ajh.claypit1@btinternet.com

**Village Hall Bookings:**  
website www.friethvillagehall.org  
email friethvillagehall@gmail.com  
Tel 01494 880737

### **Frieth Natural History Society:**

Alan Gudge, 01494 881464

**Frieth Village Society:** Caroline Walker  
01494 882333

### **Frieth Cricket Club:**

Ben Smiley  
friethcricket@btinternet.com

**Frieth Lunch Club:** meets on last  
Friday of the month at the Yew Tree Pub.

Judy Hunt, 01494 882227  
ajh.claypit1@btinternet.com

**Pilates:** Mondays at 2pm - 3pm. Wednesdays  
at 2pm - 3pm. Lauren Owen  
www.pilat-ease.co.uk

### **Hambleden (St Mary the Virgin)**

#### **Churchwarden:**

Jill Steward 01491 571320  
jillsteward@hambleden.com

#### **Deputy Churchwarden:**

Sharon Smith 01628 487458 sharon-  
smith0505@btinternet.com

**Bell Ringing:** Fri 7.45pm practice, Helen or  
Karen, hambledenbells@mycomputer.email

**Village Hall Bookings:** Jamie Baker,  
01491 410669, www.hambledenillagehall.org

**Pilates:** Mondays 11 – 12 Fran Presho,  
07951 019594

**Bridge Club:** Fridays 1.30 – 4.30  
Frances Cugnoni, 01491 576409

**Hambleden Social and Sports Club:** Open  
daily from 8 pm Pat Eldridge,  
01491 576067

**Tennis Club:** Heather Symons,  
01491 577344, heathersymons16@hotmail.com

**Tennis Coaching:** Chris Marshall,  
07801 999230, chrismarshall20@hotmail.com

**Yoga:** Monday 7pm-8.30pm  
Debbie Flavell, 01491 414403,  
debby@debbyflavell.com

**Indoor Market:** Hambleden, 2nd Saturday in  
Month (except January) **Circle Dance** Thurs-  
day 7pm – 8.30pm  
Debbie Flavell 01491 414403  
debby@debbyflavell.com



## **Medmenham (St Peter and St Paul)**

### **Churchwarden:**

Vacant. Please contact Rev. Sue Lepp,  
07930 520562, revsuelepp@gmail.com

**Village Hall Bookings:** Emma Tentori,  
07759 014396

### **Uniformed organisations:**

#### **1st Danesfield Scouts, Cubs and**

**Beavers:** leader Nick Currie,  
enquiries@danefeldscouts.org.uk

### **Medmenham News:**

medmenhamnews@icloud.com

## **Skirmett**

**Village Hall Bookings:** Mandy Heller, 01491  
638355 www.skirmettvillagehall.org

**Tai Chi:** Friday 9.30am - 10.30am.  
Contact: junekingsburytaichi@gmail.com

**Hambleden Valley Garden Club:** Meetings  
Oct-Mar on first Tuesday each month at Skirmett  
Village Hall 7.30. Contact Celia Warren, 01491  
638691.

## **Turville (St Mary the Virgin)**

### **Church Warden:**

Caroline Sants, 01491 638994  
turvillechurchwardens@gmail.com

### **Deputy Churchwarden:**

Vicky Hollier  
turvillechurchwardens@gmail.com

**Bell Ringing:** Wed practice,  
Rachel Wallace, 01494 883025  
rachel@markjwallace.com

### **Pilat-ease Reformer and Matwork Studio.**

Privates & semi-private Pilates classes  
(weekdays). Lauren Owen  
www.pilat-ease.co.uk

**Sunday School:** Sara Harman,  
01491 639211

**Artists' studios:** Turville Studios open the  
first Sunday of every month 11am-4pm.  
Angela Fois turvillestudios@aol.com  
www.turvillestudios.co.uk

## **Turville Northend**

### **Village Hall Bookings:**

David & Susan Faragher 01491 638960 or  
07563 903678, davidfaragher@fastmail.fm

smfaragher@fastmail.fm

**Yoga:** Saturday 8.45-9.45am,  
Tiffany 07785 615583

### **Parish Council Contacts**

**Hambleden:** Parish Clerk Lorna Coldwell  
01494 881483, clerk@hambleden.org.uk,  
www.hambleden.org.uk

**Medmenham:** Parish Clerk Carole Burslem  
01494 449215, mpc.clerk@gmail.com

**Turville:** Parish Clerk Lorna Coldwell,  
01494 881483, turvilleparishcouncil@gmail.  
com, www.turvilleparishcouncil.org.uk

**Fawley:** Clerk to Fawley Parish Meeting  
Mr Ross McDonald, 07769 971252  
r.mcdonald2007@yahoo.co.uk

### **Magazine details**

**Editor:** Penny McLeish,  
01491 571288,  
hambledenvalleyeditor@gmail.com

**New subscriptions:** Penny McLeish,  
01491 571288, penny\_mcleish@hotmail.com

**Advertising Manager:** David Napier,  
01491 574230, david\_napier@btopenworld.  
com

### **Distributors:**

Fawley: Hilary Beck-Burridge, 01491 413171;  
Fingest: Brian Barnes, 01494 882613;  
Frieth: Tony Parkins, 01494 882170;  
Hambleden: Samantha Webb, 01491 414418;  
Medmenham: Jim Tilbury, 01628 487135;  
Mill End: Robert Spicer, 01491 577747;  
Northend: Susie Phillips, 01491639584;  
Elizabeth Arnott, 01491 638337,  
Sarah Evans, 01491 639240;  
Pheasants Hill: Kate Hussey, 01491 576913;  
Skirmett: Bessie Webb, 01491 638574;  
Southend: Valmai Pickett 01491 638523;  
Turville: Christine Massey, 01491 638679;  
Woodend: Helen Balkwell, 01628 471403.

**Postal Distributor:** Stephen Sidders,  
01491 639271 stephensidders@sky.com



# ROWLANDSCAPES

## CREATIVE LANDSCAPE GARDENING

- Patios & paths • Brickwork • Planting & hedging
- Fencing • Driveways • Wildflower meadows
- Lawns • Garden maintenance • Tree surgery
- Woodland management • Agricultural fencing

**Telephone:** 01844 351919 **Mobile:** 07718 257104

**Email:** rowlandscapes@googlemail.com **Website:** www.rowlandscapes.com

Telephone  
01491 574644



Established  
1906

FAMILY RUN INDEPENDENT MEMORIAL MASONS

36 READING ROAD, HENLEY ON THAMES, RG9 1AG

[www.etsheppard.co.uk](http://www.etsheppard.co.uk) [info@etsheppard.co.uk](mailto:info@etsheppard.co.uk)

Private Car Parking

City & Guilds  
NPTC

# TWIGGER TREES



## TOTAL TREE CARE and FOREST MANAGEMENT

- Arboricultural tree climbing
- Dangerous tree removal
- Woodland thinning
- Directional winch felling
- Building site tree clearance
- Eco friendly material disposal
- NPTC qualified and Fully insured
- Competitive pricing with free quotations
- 24/7 EMERGENCY CALL OUT



**T** 07951 274 259 **E** [troy@twiggertrees.co.uk](mailto:troy@twiggertrees.co.uk)

# Peter Freebody & Co

BOATBUILDERS OF THE THAMES EST<sup>®</sup> OVER 300 YEARS



BOATBUILDERS • RESTORERS • BROKERS

TELEPHONE: 01628 824382 WWW.PETERFREEBODY.COM  
THAMES BOATHOUSES, MILL LANE, HURLEY, BERKSHIRE, SL6 5ND



## Your local experts

If you are thinking of selling your home, or would like some advice on the current market in the Hambleden Valley, please contact the Henley office.

Nick Warner  
Office Head, Partner  
nick.warner@knightfrank.com

Matt Davies  
Partner  
matt.davies@knightfrank.com

Knight Frank Henley  
20 Thameside, Henley-on-Thames  
RG9 2LJ, United Kingdom  
01491 818416  
henley@knightfrank.com

[knightfrank.co.uk](http://knightfrank.co.uk)



Advice you  
can trust,  
experience you  
can depend on.

Local people, looking after Local people.

Tel: 01491 411066

[sales@timpeers.com](mailto:sales@timpeers.com) | [lettings@timpeers.com](mailto:lettings@timpeers.com)

Tim Peers Estate Agents | 19 Duke Street  
Henley-on-Thames | Oxfordshire | RG9 1UR



[www.timpeers.com](http://www.timpeers.com)