

# Hambleton VALLEY

## Group Magazine

Annual Subscription £16

£2.00  
Sep 2022



The Hambleton Valley Group of Churches  
"To see our lives and communities transformed by the love of God"

Hambleton  
with Frieth  
& Skirmett  
Fawley  
Findest  
Medmenham  
Turville



Cover: Drought in the Hambleden Valley. This page: Lovely new road surface in Hambleden.

## In This Issue

Group Letter	1
Group Notes and News	4
Wildlife	7
Hambleden	8
From the Registers	14
Calendar	15
Frieth	17
Fingest	17
Turville and Northend	18
Medmenham	21
Fawley	22
Classified Advertisements	24
Church and Village Activities and Contacts	26

## Weekday Services

**Wednesday - 9.30am, Zoom**

**Daily Prayer - 10.15am, Holy**

**Communion, Turville**

### Emergencies:

If you are unable to contact the Group  
Priests, please get in touch with your  
churchwarden.

All contributions are welcome, to the  
Editor, Penny McLeish  
hambledenvalleyeditor@gmail.com (please  
note change of email address)  
3 Abbey Cottages, Ferry Lane,  
Medmenham SL7 2HB  
Telephone 01491 571288

Please keep articles within 350 words. Copy  
deadline is 15th of the month.

Printed by Higgs and Co., Henley.  
Tel. 01491 419429

**Dear Friends,**



This time last year we were taking tentative steps coming out of lockdown as 'old' and 'new' activities resumed and 'ordinary' social interaction started again. I wrote that

Group Letter to encourage us to try new things despite the ongoing uncertainty many of us faced with the (hopeful) reassurance that God is always doing new things.

As the summer draws to a close, again we are on the cusp of a new season. Autumn brings changes to routine and activity for many. For those involved in education it always has been a time of new beginnings. I am looking forward to seeing the pupils at Frieth School; to hear about their summer holidays and to see how much they have grown. They always have a good story for Revd Sue! I also want to catch some of their enthusiasm for new things, the natural curiosity and refreshing outlook children have. The school motto is 'let your light shine' and everyone - pupils, staff and governors are encouraged to do that in a myriad of ways.

I would suggest that those of us not heading

back to school to take a lesson from the pupils at Frieth School. The world remains unsettled and dangerous for many people. The cost of living, the capacity of the NHS and the state of the government loom large. Maybe the prospect of new things and changes are more daunting than in years past. Despite not knowing what is going to come next - worldly, locally and personally - we can let our lights shine.

We can love our neighbours as ourselves, we can engage with our community activities and churches. We can pay attention to the world around us and do what we can to make it better for everyone. We can experience new things. It is true that we more often regret the things we do not do rather than the things we do.

Whatever we do, we can trust that God is with us, cheering us on, walking beside us when we lag behind and helping us up when we fall. Remember, *"You are the light of the world. A town built on a hill cannot be hidden. Neither do people light a lamp and put it under a bowl. Instead, they put it on its stand, and it gives light to everyone in the house. In the same way, let your light shine before others, that they may see your good deeds and glorify your Father in heaven. (Matthew 5:14-16)*

**Sue Lepp**

---

# HIGGS GROUP

Design • Print • Copying • Office Supplies • Publishing

Publishers of the *Henley Standard*

Printers of the *Hambleton Valley Group Magazine*

Caxton House, 1 Station Road, Henley-on-Thames, Oxon RG9 1AD

T: 01491 419429 E: [henley@higgsgroup.co.uk](mailto:henley@higgsgroup.co.uk) W: [www.higgsprinting.co.uk](http://www.higgsprinting.co.uk)

---



**Opening Hours** Monday - Sunday  
Breakfast: 8 - 10 am    Lunch: 12 - 2.30pm    Dinner: 6 - 9.30pm

The Stag & Huntsman  
at Hambleden  
Tel: 01491 571227  
[www.thestagandhuntsman.com](http://www.thestagandhuntsman.com)



# Turville Nursery, Preschool & Forest School

*Expanding Educational Boundaries*

**Small classes and tailored learning  
for children aged from 0 - 5 years old.**

*We would love to meet you!*

Come to explore  
& get mucky  
in a home-from-home  
atmosphere

01491 638 071    [turvilleschool@evolution-childcare.co.uk](mailto:turvilleschool@evolution-childcare.co.uk)

# BLOCKED EARS?

Lucinda is a qualified NHS audiologist with over 20 years experience. Now providing a home service for **Earwax Removal**. Let her visit you in your own home to help relieve the symptoms of blocked ears.

Full PPE equipment used to comply with recommended Covid safety measures.



**07795 268866**

**[Lucinda@hearingscreening.co.uk](mailto:Lucinda@hearingscreening.co.uk)**

[facebook.com/blockedear](https://www.facebook.com/blockedear)  
[instagram.com/blocked\\_ear](https://www.instagram.com/blocked_ear)

HCPC registered  
Registered NHS Audiologist  
Professional indemnity insurance  
Hearing Screening and Testing Limited.  
Registered in England No.07810066

**LUCINDA**  
HEARING  
SCREENING  
& TESTING  
**ELLIS**

## GROUP NOTES AND NEWS

### **Hambleden Valley Bible Study Turville, Tuesdays, 2.30 – 4.00 pm**

We have had a lovely first term studying Mark's Gospel. There are normally between 7 to 10 of us and not everyone can come every week - which is fine. It really is for everyone who has an interest in learning more - no prior knowledge necessary. We follow a simple study guide but I think everyone would agree that we have all learned most from listening to each other. Please do join us for the next term beginning on September 20th for 9 weeks. We're still thinking what book we will study next but there will definitely be tea and cake!

Any questions? Please contact  
Vicky Hollier vickyhollier@aol.com  
Sue Dawkes dawkessue@gmail.com  
Caroline Sants 07768 424333  
cobstonesbarn@gmail.com



### **Sunday 11<sup>th</sup> September 2022 at 3pm – join us for a Wild Harvest!**

In September, Wild Church is very excited to invite you to a special type of harvest! Our 'harvest' this year will be very much looking to the future as, with the kind permission of and guidance from Maria Spink, we will be planting in a "chalk scrape". A mixture of perennial wildflowers - some of which are quite rare, such as harebells, horseshoe vetch and slender bedstraw - will be planted by us in the scrape, with the aim of bringing back butterflies that have disappeared

from our land. There is so much more to find out...do come along to hear about it and to take part in September Wild Church!

We will meet on Maria's land off Parmoor Lane: follow the track beside the house named 'Pheasants' then Wild Church signs will guide you.

**Please wear sturdy shoes/boots for walking on the chalk, bring gardening gloves and a trowel.**

Refreshments will be provided and easy access is available for anyone who would prefer not to walk far.

At Wild Church we will sing a couple of well-known hymns, hear a Bible reading and simple prayer. As always do **dress for the weather** – we will meet come rain or shine! \*\*To find out more, please get in touch with one of the Wild Church Team: Mary Campbell grandma.marycampbell@googlemail.com  
Mardi Wilkins mardi43@btinternet.com  
Rev Sue Morton 01491 639286 or suemorton131@gmail.com

### **Future Wild Church**

**Sunday 9<sup>th</sup> October 3pm**  
Go Wild! Fawley Hill Estate RG9 6JA

**Sunday 13<sup>th</sup> November 2pm**  
Remembrance at Wild Church  
Turville Heath

**Sunday 11<sup>th</sup> December 2pm**  
Wild Nativity  
Northend Common

**Do join us – we would love to see you!**

Continued on page 7

# Hambleden Village Hall

The perfect venue in the middle of the beautiful village of Hambleden.

Large hall, full kitchen facilities, patio, WiFi, hearing loop, free parking.

Hire by the hour or by session.



**For more details and prices contact Jamie Baker on 01491 410669 or email: [enquiries@hambledenvillagehall.org](mailto:enquiries@hambledenvillagehall.org) visit [www.hambledenvillagehall.org](http://www.hambledenvillagehall.org)**



## HAMBLEDEN VILLAGE STORES & POST OFFICE

**Local Artisan Produce - Freshly Ground Coffee & Teas  
Filled Rolls & Toasties - Homemade Sausage Rolls  
Organic Cakes - Fresh Bread & Pastries - Ice Creams  
Seating Area - Post Office**



**That groovy little store!  
All locally sourced and made with love!**

**Mon 8am-4pm  
Tues-Sat 8am-5pm  
Sun 8.30am-4pm**

**58 The Village. Hambleden. [info@hambledenvillagestores.com](mailto:info@hambledenvillagestores.com). 01491 571201**

# The Pedestal

Henley-on-Thames' auctioneers with world class expertise, local and international reach we offer a calendar of specialist and single owner auctions as well as our 24/7 online Shop

## Now accepting consignments for our next auctions



Sold for £1,500



Sold for £3,500



Sold for £1,812



Sold for £1,750



Sold for £8,125



Sold for £875

**To request an auction valuation please contact:**

Guy Savill or Sally Stratton MRICS: +44 (0)1491 522733 or email: [valuations@thepedestal.com](mailto:valuations@thepedestal.com)

**The Pedestal**

The Dairy, Stonor Park, Henley-on-Thames, Oxfordshire RG9 6HF

[www.thepedestal.com](http://www.thepedestal.com)

Sold for prices include buyer's premium



**End of Drought**

With one week to go  
 To the Annual show,  
 And no rain at all since the Spring,  
 The Vicar's prize leeks,  
 That he'd nurtured for weeks,  
 Lay around on the ground like limp  
 string.

The Village, dismayed,  
 Went to Church and all prayed,  
 But the Vicar – he trusted the Lord.  
 He must have been right,  
 For the very next night,  
 It poured and it poured and it poured.

The parish complained,  
 When it rained and it rained,  
 And the waters continued to rise.  
 The flower show marquee,  
 Was marooned in a sea,  
 As the torrents fell down from the skies.

The W.I. float,  
 Made a good makeshift boat,  
 For the hero, the Vicar, to save.  
 That good man just roared,  
 "Put your faith in the Lord" -  
 And climbed on the roof of the nave.

Another boat tried,  
 "Jump aboard" they all cried,  
 But their offers of help were ignored.  
 As the waters rose higher,  
 He climbed up the spire,  
 And put all his trust in the Lord.

The flight from Culdrose  
 Fared no better than those,  
 Who entreated, cajoled and implored.  
 He would not budge an inch  
 For the man on the winch,  
 Saying, "I will be saved by the Lord".

He arrived somewhat late  
 At the heavenly gate,  
 Feeling cold, wet and tired and afraid.  
 And gave Peter 'Hell',  
 When he answered the bell,  
 And complained that his trust was  
 betrayed!

This Saint Peter rejected,  
 Saying "You weren't expected,  
 It's your fault you came such a cropper,  
 I gave orders downstairs,  
 When I answered your prayers,  
 And sent you, two boats and a  
 chopper".

**John Eve**

from 'By Hook or by Crook'

**WILDLIFE****In praise of the Wasp Spider  
(*Argiope bruennichi*)**

The wasp spider has spun its way over from the Mediterranean to our southern counties and looks unlike any other spider found in the UK. It was first recorded here in the 1920s in Rye and is slowly heading northwards. Even a glance at the photograph below and a functioning memory can lead you to a successful and confident ID. You cannot get this wrong but these moments may be accompanied by companion walkers making an immediate assumption you know the names of half a dozen or more mottled brown spider species as well. The female is large 14-17mm and is no shrinking violet. She is fearless of predators because every one of them thinks she is a wasp and a large one at that particularly when full of eggs. Her striking abdomen has

## HAMBLEDEN



yellow and black stripes and her legs are stripey too. Her third set of legs is much shorter and slimmer than the other three pairs. She spins an unusual orb shaped web in grass with a stabilimentum or web decoration of a straight silk zig-zag through the centre. This embellishment is thought to reflect UV light to attract her prey closer... even closer. On her menu are grasshoppers, crickets, flies, bees, butterflies and moths but also her mate. The males are much smaller 4-6mm and are pale brown with two thin yellow lines on the underneath of their abdomens. I have discovered the males hang patiently around the edge of the web waiting for the female to go through a moult and then scamper in to seduce her before her new mandibles have hardened thereby hoping to avoid being eaten in the process. Wasp spiders are found in grasslands between April and October. They create a large pale brown urn shaped egg sack up to 25mm across and sometimes with dark

vertical bands. The sac is attached to a grass stem so these beautiful arachnids can only thrive where there are no grazers nor where the grass is mown or cut for hay. This wonderful photograph was taken by Martin Short.

**Sarah Ronan August 2022**

## HAMBLEDEN

### Commemorative Bench



With monies raised from our Jubilee Celebrations, a commemorative bench has been installed in Hambleden. (Thanks Paul) and also to our Sponsors.

**Pat Eldridge and Mavis Tuddenham**



### Race for Life

On a Very Hot Sunday in July, I completed 5km in Race for Life in 45mins! I would like to say a Huge Thank You to all my Sponsors. Thank you once again.

**Pat Eldridge**

Continued on page 11

*For the perfect relationship...*



Savills Henley  
01491 843 000

[savills.co.uk](http://savills.co.uk)

don't rely on luck, rely on



## Graham Blake soft furnishing

- Loose Covers • Curtains •
- Re-Upholstery • Tracks and Poles •

TEN YEAR GUARANTEE

For personal, helpful service, please call

Tel: 01844 261769 • Mob: 0780 1182 400

grahamblake123@btconnect.com

www.grahamblake.com

## Midway Chimney Sweeps and Linings

*Chimney Sweeping and Boiler Cleaning*

Member of National Association of Chimney Sweeps

Recommended by Coal, S.F.A.S. and Gas Board

ESTABLISHED OVER 30 YEARS

TELEPHONE: HIGH WYCOMBE (01494) 564321

Mobile 07850 196616

## G M PAGE FURNITURE RESTORATION

**ALL ASPECTS OF FURNITURE RESTORATION  
UNDERTAKEN, BOTH ANTIQUE AND MODERN**

DINING TABLES REFINISHED  
FRENCH POLISHING AND MODERN FINISHES  
RE-UPHOLSTERY  
CANE AND RUSH WORK  
SPECIALIST VENEER REPAIRS  
DESKS RE-LEATHERED

INSURANCE WORK UNDERTAKEN

TELEPHONE: 01494 511234  
MOBILE: 07754533128  
EMAIL: [page1830@aol.com](mailto:page1830@aol.com)  
WEBSITE: [gmpagerestoration.co.uk](http://gmpagerestoration.co.uk)



**EST. 1988**

## Natural Sculptures seen in woods above Hambleden



*photos Mardi Wilkins*

## Preparations For Harvest Festival at Hambleden, 11am, Sunday 18th September



For 35 years David Emmett from Rockwell End Farm has gone to great trouble, in the early years with his wife Gill, to grow the traditional long strawed wheat for our Harvest Festival Ceremony

in the church. We have enjoyed this, and are very grateful to David. Sadly for us, David and his family are moving away at the end of the summer.

Isobel Bowden of Parmoor Park Farm has stepped into the breach! She has kindly said that we can cut enough of her modern-day wheat with shorter, but very adequate straw, to make the bundles that we need. Thank you, Isobel! And thank you David, we wish you well.

In the photo you will see the Hambleden reapers, James, Linda and Charlie, cutting the wheat before the arrival of the Combine Harvester.

Put Hambleden Harvest Festival in your diary!

## **Jill Steward**

## **Ernest Boddy**



No, this is not a name from fiction - but novelists have missed a trick.

Through a blacked-out window just shattered by a bomb, Ernest Boddy peered in from the street: "Soon 'ave you decent!" And he did: rubble was cleared and glass replaced. Then cupboards



were built. *Handyman* soon became *Handyman/Valet* and, later, *Handyman/Valet/Nanny*. The flat cap may have sat uneasily among the grey uniforms with prams but they would never stick a dummy in Malt and Cod Liver Oil and they couldn't mend a tricycle.

When in Skirmett, he spent his evenings at The Kings Arms (*The Frog*) in Skirmett and slept in the garage. He liked cucumber in vinegar, did the pools and rolled his own. While he worked, he sang *Carolina Brown (Pride of China Town)* and *Lily of Laguna*. He polished shoes and cars to a high sheen. He insisted that when painting and decorating the most important thing (not, as it turned out, to be found in a squat red and blue tin) was elbow grease.

He led a life free from family ties, which he kept vague, in Bourne End. He was often "hired out". Everyone called him "Boddy" but found themselves droppin' their Gs. Once his leg came down through the ceiling above a dinner party.

When he went AWOL furious employers chased him and his mate Duffy down Kilburn streets, hurdling the low walls between front gardens. He had a poetic turn of phrase, saying of one pursuer "Eyes like coals 'e 'ad, eyes like coals".

*Continued on page 17*

# Absolutely Fabulous

CARPET, RUGS, UPHOLSTERY & STONE FLOOR CLEANING

EXTENDING THE LIFE OF YOUR CARPETS, RUGS, UPHOLSTERY & STONE FLOORS

**The most thorough cleaning you've ever seen... or it's FREE.**

For Absolutely Fabulous cleaning of your carpets, upholstery, rugs or stone floors, give us a call today **01491 540005**



We have our own dedicated rug wash facility  
**Free collection and delivery of all rugs.**



All floor tiles and grout cleaned, full restoration of  
all natural stone floors (incl. marble floor polishing).



"Excellent time keeping, very courteous, excellent workmanship" ★★★★★

"Honest, friendly, efficient and reliable" ★★★★★

"Thorough, prompt, friendly, knowledgeable" ★★★★★

"I would definitely recommend this company to all my friends and family." ★★★★★

[www.abfab.uk.com](http://www.abfab.uk.com)



**Holiday Villa to Let**  
[www.corfubeachhouse.co.uk](http://www.corfubeachhouse.co.uk)

# Church Services and Events

[www.hamblenden-valley-churches.org.uk](http://www.hamblenden-valley-churches.org.uk)

## From The Registers

### Holy Baptism

July 31	Joey Heller	Medmenham
---------	-------------	-----------

### Holy Matrimony

July 16	Matthew Baddeley and Emma Gutteridge	Hambleden
July 23	Robert Morgan and Rosalie Heller	Hambleden
July 30	Thomas Ellis and Una Cho	Hambleden
Aug 5	Charles Chell and Hannah Carder	Hambleden
Aug 6	Rory Webb and Natalie Hudson	Hambleden
Aug 13	Simon Farmilo and Florence Brewer	Hambleden

### Rest in Peace

July 27	Michael Gilbey	Memorial Service and Burial, Hambleden
Aug 12	James and May Keep	Burial of Ashes, Frieth



## Hamblenden Valley Prayer Group

We have formed a contemplative listening and confidential prayer group, forming a circle round the valley with God at the centre. If you would like prayer please send a request to the email below:

[hamblendenvalleyprayergroup@gmail.com](mailto:hamblendenvalleyprayergroup@gmail.com)



**Healthy Ovens**  
HEALTHY, HAPPY OVENS IN A JIFFY  
[www.healthyovens.co.uk](http://www.healthyovens.co.uk)

**Professional Oven Cleaning Services**  
**A CLEAN OVEN IS A HAPPY OVEN!**

**Healthy, Happy Ovens In A Jiffy**  
**Get Your Oven Cleaned TODAY!**

 **01491 714012**  
 **info@healthyovens.co.uk**



# CALENDAR FOR SEPTEMBER 2022

## Pattern of Worship September 2022

Please see below for Sunday services. There will also be Zoom services at 9:30am and the 10.15am midweek Holy Communion at Turville on Wednesdays. Please refer to our website for the most up-to-date information or contact Jenny Neagle on [hambledenvalleyadmin@gmail.com](mailto:hambledenvalleyadmin@gmail.com) (07769 599616).

[www.hambleden-valley-churches.org.uk](http://www.hambleden-valley-churches.org.uk)

## Sunday Services

	Fawley	Fingest	Frieth	Hambleden	Medmenham	Turville	Zoom
28th August	11am Holy Communion	6pm Evensong	9am Holy Communion/Zoom	11am Holy Communion		9.30am Holy Communion	9am
4th Sept				10am Group Service			
11th Sept	11am Holy Communion	9am Holy Communion	3pm Wild Church, off Parmoor Lane	11am Holy Communion			9.30am
18th Sept			9am Holy Communion/Zoom	8am BCP Holy Communion 11am Harvest Festival			9am
25th Sept	11am Harvest Festival	6pm Evensong	9am Holy Communion/Zoom	11am Holy Communion		9.30am Holy Communion	9am
Sat 1st Oct						3pm Animal Blessing	
2nd Oct		6pm Harvest Festival	3pm Harvest Festival			10am Group Service - Harvest	

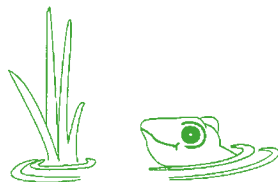
# The Frog at Skirmett, Henley-on-Thames

(Closed Sunday Evening — November to May)

Non-smoking Restaurant with an unusual selection of New English, French and Mediterranean style food.

Food is served for LUNCH and DINNER 7 days a week, May to November

Family room for children. En-suite accommodation. 36 seat function room



**Tel: 01491 638996 Fax: 01491 638045**

Gerrards Cross  
38 Oak End Way  
Tel: 01753 891892

Slough Slough  
273 Farnham Road  
Tel: 01753 535556

High Wycombe  
891 London Road  
Tel: 01494 472572

Marlow  
21 -23 Little Marlow Road  
Tel: 01628 898866

Beaconsfield  
32 Gregories Road  
Tel: 01494 685000

Traditional, Alternative & Green Funerals  
Pre -Payment Plans ~ Stonemasonry ~ Floristry



6 Generations of Service in the Community  
24 Hour Service

## ARNOLD FUNERAL SERVICE INDEPENDENT FAMILY FUNERAL DIRECTORS



## COAT & TAILS

All breeds of Dogs and Cats • Long Coats a speciality  
Collection or home service by arrangement

MAIDENHEAD-MARLOW-HENLEY  
PROFESSIONAL & CARING  
With 35 Years' Experience  
Clipping/Hand Stripping

Rotten Row Farm • Hambleden  
Henley-on-Thames • Oxon  
Tel: 01491 636140

[www.coatandtails-Hambleden.co.uk](http://www.coatandtails-Hambleden.co.uk)

## Whatever you want to store...

...for whatever reason - house sale and purchase not coinciding, travelling, house building work, paperwork overload or even "de-cluttering" to sell your house more quickly - we offer a friendly and flexible local service.

With competitive rates, secure storage and hassle free 24/7 access, contact us now!



**01189 404163** [www.barn-store.co.uk](http://www.barn-store.co.uk)

He understood his employers' foibles. Referring to one in Mill End: "Lovely woman, Mrs DeeBroo, lovely woman - but you gotta know 'er".

The photos are stills from a very old cine film showing him herding some cheerful piglets up Fingest Lane and posing with the farmer.

**Caroline Davis**

### FRIETH

#### Frieth School

Having now reached the end of the school term, I can honestly say I've had the most wonderful first year at Frieth. As I said to our parents at the Summer Queen Celebration, I look forward to seeing our wonderful pupils here every day.

What a magical event Summer Queen was! As someone who has never seen it before, I can now see why it is such a unique occasion; just one of many things that makes Frieth a special place. The children looked exquisite in their outfits and the performances were fantastic. I hope anyone who popped along enjoyed it as much as I did.



Towards the end of term, our Year 6 children experienced a terrific week away

at River Dart Country Park down in Devon. They participated in a range of activities, all of which tested their ability to work as a team, to fend for themselves, to embrace challenge and reach new heights! They did an excellent job and we were proud of them all.



Finally, I would like to acknowledge our fantastic parent community and thank them for their positivity and kind words throughout the year.

**Martin Gosling**  
**Headteacher**

### FINGEST

#### Fingest Past

**Schooling (2)** – In 1906 the rector of the Parish of Fingest the Revd. Henry Joscelyn retired. During the period following his retirement, 1906 to 1909, he exchanged a series of letters with the new incumbent the Revd. John Stratton Davis. The following is a transcription of part of a letter Henry Joscelyn wrote to John Stratton Davis regarding the Revd. Francis Edmonds charity (£15 per year to assist in educating and clothing six deserving

## TURVILLE AND NORTHEND

boys and girls of Fingest; see Fingest Past - Schooling (1) August, 2022).

Chalgrave, West Seabourne-on-Sea, Hants.

Edmund Charity, pages 96 & 97. Blue Book

### Income

In hand

In the Blue Book £1. 3. 10

Mr Bliss' cheque about £14. 0. 0

Total 15. 3. 10

### Expenditure £ s d

Rev. F. L. ----, Vicar of Lane End for 7 children at 25/- 8. 15. 0

Rev. J. E. B. Brine, Vicar of Cadmore 3 children at 25/- 3. 15. 0

Keep for 2 children in Fingest Proper 2. 10. 0

15. 0. 0

This will leave you a small s d balance probably a little more than 3/10

I have spent the money for the Fingest Proper children and you will find the account of the same on pages 98 & 99 of the same book.

s d

In hand when I left 19. 1

To come out of Mr Bliss' cheque for 2 children 2. 10. 0

Total £ 3. 9. 1

N.B. So all this money was only required for 2 Edmond Scholars as they are called. I have sometimes added a third or even a fourth. You will see the names in the Blue Book."

### **Don Boreham**

## TURVILLE AND NORTHEND

### **Northend Concert**



CHROMA chamber ensemble at Northend Village Hall

On 18th September, following on from the fantastic recital with the Edenis String Quartet in May, there'll be another concert in the beautiful setting of Northend Village Hall. For many years I've worked with the award-winning ensemble, CHROMA and they'll be giving two concerts - at midday and 3pm - of music for clarinet,

Continued on page 21



## **Peter the Painter**

T/A Ideal Decorations

### **Interior and Exterior Decoration**

**32 Green Dragon Lane, Flackwell Heath, Bucks HP10 9JZ**

**Telephone: 01628 527865 Mobile: 07976 513652**

**[peterthepainter@live.co.uk](mailto:peterthepainter@live.co.uk)**

# T&S

Tomalin & Son

## A Family Run Independent Funeral Service

24 hours service | Private client parking | Private chapel of rest  
Free home visits | Pre-paid funeral plans | Full written estimate

# Tel: (01491) 573370

[www.tomalins.co.uk](http://www.tomalins.co.uk)    [office@tomalins.co.uk](mailto:office@tomalins.co.uk)  
Anderson House, 38 Reading Road, Henley-On-Thames, RG9 1AG



Golden  
Charter  
Funeral  
Plans

## J. A. BRAKSPEAR PLUMBING & HEATING LTD

TEL/FAX: 01491 575428

E-MAIL: [JOHNBRAKSPEAR@GMAIL.COM](mailto:JOHNBRAKSPEAR@GMAIL.COM)



Registered  
Business

**Bathroom renovations • Boilers Replaced  
Heating system Maintenance and Installation  
Free Estimates • No Job Too Small**



## Skirmett Village Hall

A bright lovely hall with fully equipped kitchen  
in the Hambleden Valley available for  
meetings, workshops classes and parties.

Website: [Skirmettvillagehall.org](http://Skirmettvillagehall.org). For bookings  
Contact Mandy Heller 01491638355

# ▲▲ D. J. Macleod ▲▲

Tree Surgery, Felling, Planting and Hedge Cutting

Fencing and Gates Supplied and Erected

**Quality Firewood for Sale**

Producer and Supplier of Wood Chips

Cedar Cottage, Parmoor, Henley-on-Thames RG9 6NN

Mobile 07850 724023

# 01494 882901

[www.donlogs.com](http://www.donlogs.com)

e-mail: [donlogs@hotmail.com](mailto:donlogs@hotmail.com)



# Danesfield Gardens

Henley Road, Medmenham, Near Marlow, SL7 2EU

Your local nursery for bedding and patio plants for spring and autumn  
Baskets filled, compost, chimney pots and ornaments

Phone: 01628 484509

Betty Ryan  
and Isabel McCrindle



Edward Briscoe MIPW

## LASTING POWERS OF ATTORNEY

£250\* per person

Covers Health & Finance 2 home visits, advice and certification \* OPG charges of £82 per application are extra

### WILLS IN ENGLISH

*Turning your Will into your Deed*

Wills from £140 if you don't have one - Compliant with the IPW code of practice

Bakery Lodge Skirmett RG9 6TD \* Phone: 07962 157843 01491 638075 \* Email: [edward@willsinenglish.com](mailto:edward@willsinenglish.com)



## J & D Mooney

YOUR "CLEAN" RELIABLE QUALITY  
PAINTER & DECORATORS  
— DOMESTIC & COMMERCIAL —  
*Family run business for over 30 years!*

Telephone 0118 934 4230

Mobile: 07961 366535

[darrenjomooney@hotmail.com](mailto:darrenjomooney@hotmail.com)

[henleyschicdecor.co.uk](http://henleyschicdecor.co.uk)

- N.V.Q. Qualified
- Many references available in and around Henley
- No job too small!!!
- Interior and Exterior work done!
- Free Competitive Quotes! — No Obligation
- Prompt and Friendly Service!
- C.I.S. Registered Business
- Full Public Liability Insurance
- Specialist in Rural run down property



# W. J. Webb & Son Ltd.

(Established 1968)



## BUILDERS and DECORATORS CONVERSIONS and GENERAL REPAIRS

Hambleden, Henley-on-Thames

Tel: 01491 571366

e-mail: [wjwebbandson@googlemail.com](mailto:wjwebbandson@googlemail.com)

harp, violin and cello by Ravel, Debussy, Dukas and de Falla as well as playing some tangos by Argentinian composer Astor Piazzola. Tickets are £15 (which includes a post-concert glass of fizz) and can be purchased on the door or reserved by sending an email to: northendconcerts@gmail.com

I hope to see you there!

**Phil Cashian**

## MEDMENHAM

### Harry Gutteridge – Article 4



*Harry Gutteridge  
Sapper 59305 1st  
World War*

We left Harry and family at Medmenham early in 1911. He lived in Abbey Cottages and worked down by the ferry in the old sheds there. I remember it well many years later. As a child I would sit with him there as he smoked his

pipe of ‘thick twist’ tobacco so many his generation smoked.

Medmenham Ferry was, in the early years of the century, a chain ferry for horses, carts and cars. But there was also a grey clinker dinghy in which he rowed foot passengers across the river.

Briefly there was a temporary, military pontoon bridge across the river here before the Great War. Grandad recalled its failure involving near tragedy, after

which it was cleared away. A keen recycler, he salvaged much of the bridge material.



*Medmenham Horseboat (1920-30s)*

Harry’s family had increased again with the arrival of Tom in 1911 and my father Harold in 1914. Harry joined the Royal Engineers during the 1<sup>st</sup> World War as a wheelwright, ‘sapper’ 59305, probably in the signals branch. Stationed at Haines Park in Bedfordshire he was hospitalised with a broken arm in Napsbury Hospital in 1917. 6<sup>th</sup> son Ron arrived in 1916 and the end of hostilities was marked by the arrival of a 7<sup>th</sup> son, Herbert, in 1919.



*Medmenham Ferry Pontoon Bridge  
disaster 1913*

His employer at Medmenham Abbey, Sir Douglas Dawson, was close to the Royal

## FAWLEY

Family. In April 1916, Harry recorded taking the King, Queen, Prince of Wales and Prince Albert (later George 6<sup>th</sup>) across the river when they visited the Abbey.

But after the war things were changing. In 1921, Granny Guttridge died. She was Harry's step grandmother, his grandfather's second wife. She had been helping her daughter Charlotte Sartin with the Post Office.

Harry's children were leaving school, Bob to join the 'Met' in London, other sons to work in the Abbey gardens where there was a large team of gardening staff under head gardener Mr Aird.

The Dawsons left the Abbey in 1920, and the new owner of the Abbey was a world away from the aristocratic Dawsons. A 2<sup>nd</sup> generation immigrant Arthur Bendir, fabulously wealthy owner of Ladbrokes the bookmakers, had scandalised society by his relationship with Margot Erskine, a married woman with whom he had a daughter in 1906. In 1921 Arthur Bendir married Margot and bought the Abbey as a wedding present for her.

The roaring twenties were coming to Medmenham!

### Joe Gutteridge

## FAWLEY

### Fawley Church Pond



Our Fawley Church pond is maintained by the Sargent Charitable Trust which has installed the rustic post and rail fencing as well as the very necessary bollards protecting it from huge lorries trying to negotiate a tight corner. It has a puddled clay bottom which relies on rainwater run-off from the road to fill it. Not too useful in a period of prolonged drought as we have now in July and August, when it is completely dry.

However, it doesn't seem that long ago since the water was up to the road level with ducks swimming on the Church Hill side road!

### Hilary Beck-Burridge



Denning Montessori Nursery and Forest School - Fawley

[www.DenningMontessoriSchool.com](http://www.DenningMontessoriSchool.com) - Tel: Jenny 07982 620710



## The Well at Fawley



Fawley is one of the highest villages in the Chilterns so has one of the deepest wells (about 120m).

Imagine digging it by hand - would the workers have needed piped oxygen? Fawley has no natural water supply, such as a spring or river, so before the 20<sup>th</sup> century, villagers collected water from the roofs of their houses and stored it in underground tanks. The last stand pipe in the village was in about the 1930s and

sited in front of the Old Post Cottage, by the Green between the post box and telephone box.

In 'Gone Rustic', Cecil Roberts, a local author who used to live at The Old Forge, tells of the local Squire's daughter who descended the shaft with some friends and was held to ransom for a round of beer by the workmen she joined at the bottom.

There are similar wells to be found at Gallowstree Common, Kidmore End and the more famous one at Stoke Row, The Maharajah's Well donated to the village by the Maharajah of Benares.

(Taken from the sign attached to the well. If anyone knows more details, please send them to me at [hambledenvalleyeditor@gmail.com](mailto:hambledenvalleyeditor@gmail.com))

**Penny McLeish**



## Turville Northend Village Hall

Large Hall, Committee Room, Kitchen, Private Terrace, Parking.  
Available for: Meetings, Workshops, Parties, Weddings, Classes.

For further information & bookings visit: [www.thevillagehall.co.uk](http://www.thevillagehall.co.uk)  
Turville Northend Village Hall, Northend, Henley-on-Thames, Oxfordshire RG9 6LJ

## ADVERTISEMENTS

**Corfu** — comfortable sea-edge villa in Durrell country to let privately. Between Kassiope and St Stefanos. Direct BA flights from LHR Ter.5. [www.corfubeach-house.co.uk](http://www.corfubeach-house.co.uk) Armstrong 01491 571324

### North Cornwall,

**Harlyn Bay** Padstow 4 miles. Family cottage with garden. Sleeps 6. Quiet lane with footpath leading to huge sandy beach. Excellent surfing, walking, golf. Very reasonable rents. Beck-Burridge 01491 413171.

### Computer Problems?

Local help in fixing problems, selecting systems and personal tuition including email/ internet. Contact Matt on 01491 575998 or 07821 592928.

### Mulberry Flooring.

Specialists in wood floor restoration. Please call for free quote 01494 535348.

**Rock, North Cornwall.** Old cottage by the beach, newly refurbished, sleeps 8. Available for holiday lets. Contact Mandy Heller on 01491 638355 or [johnheller@poyonnattscottage.com](mailto:johnheller@poyonnattscottage.com)

**Salcombe, South Devon.** Three bedroom cottage, recent refurb, stunning estuary views, quiet & close to town centre, sleeps six, easy access beaches/walks, holiday lets throughout year, 01491 577344

**The Pet Feeders** - We look after your pets when you can't. Local firm, insured/CRB checked. [www.thepetfeeders.com](http://www.thepetfeeders.com). Mobile: 0753 100 7419. Email: [info@thepetfeeders.com](mailto:info@thepetfeeders.com)

**Valencia** Large Luxury Family Villa with Pool and Tennis Court. 15 mins from the City Centre, 10 mins from the Airport. Sleeps 14 comfortably, 6 bedrooms / 4 bathrooms. Visit [www.homeaway.co.uk/p1029900](http://www.homeaway.co.uk/p1029900) to see our reviews. Contact Virginia or Andy Coombes for more information on 01491639419/ 07860847256

**Snowdonian Cottage.** Cosy and comfortable traditional 3 bed stone cottages sleeps 6, wood burner and wi-fi, in coastal village, Llwyngwrl on the Welsh Coastal Path. An ideal base to enjoy and explore 'the most dramatic and alluring region in Wales'. Beaches, mountains, River Mawdach and Dyfi

Estuaries, lakes and so much more. Dog Friendly. Contact Euan McCrindle 07713 952495 / 01628 475644 or email [euancmccrindle@hotmail.com](mailto:euancmccrindle@hotmail.com) for more information and detail.

**Music Teacher!** - Qualified musician offering great value Piano and Vocal lessons. 5 Years Experience, Fun and engaging lessons for all ages and abilities. Contact Sasha Steventon (BMus) on 07740 289467 or [bluemusic@outlook.com](mailto:bluemusic@outlook.com) [www.bluemusic.co.uk](http://www.bluemusic.co.uk)

**Isle of Mull.** The Bothy sleeps 4, available for weekly holiday lets, and The Studio sleeps 2, available for 2-5 nights. An ideal peaceful location for exploring this beautiful island. Wonderful panoramic views, walks, beaches, wildlife. Visit [www.thsmithymull.co.uk](http://www.thsmithymull.co.uk) for more information.

**Dairy Lane Dog Grooming** Hand-stripping, Clipping, Scissoring, Bathing, Nails. Louise McTeague, 4 Dairy Lane, Hambleden, Henley-on-Thames, Oxon RG9 3AS Tel 01491 579442 Member of British Dog Groomers Association and Pet Care Trust



## HAMBLEDEN SPORTS & SOCIAL CLUB



### Have you ever ventured inside the Hambleden Social Club?

**Hambleden Sports and Social Club** is a community organisation providing sporting facilities on the Dene in Hambleden, as well as a Social Club in the village centre. The current sporting sections are cricket, tennis, football and pool.

Take a look at our website at [hambledenssc.co.uk](http://hambledenssc.co.uk) for more information.

The **Social Club** is situated in the centre of Hambleden Village, to the left of the Post Office/Shop. The club is a members club which allows us to provide alcohol and soft drinks at low prices, for consumption by our members and their guests. The Social Club offers fruit machines, pool table, darts, TV, comfortable seating and a friendly atmosphere!

**Membership:-** £25 per year or £13 for OAPs and Students

**Opening hours:-** 8pm - 11pm (Tuesday – Saturday)

You can also hire the Social Club for meetings during the day and functions in the evening. Please contact **Pat Eldridge 01491 576067** for more information.

***We are lucky to have this facility in our wonderful valley, please do pop in and take a look for yourself!***

## Protecting your wealth and loved ones

- Everyone should have a Will, but 2 out of 3 people have not yet made one, and those that **have may not have the correct Will** in place.
- If you own a business or a share of a business, your spouse/partner and children may not necessarily inherit your share.
- An estimated 70,000 people per year have to sell their homes to **pay for care**.
- Effective planning can also protect the **inheritance of future generations** from **divorce or separation** settlements.
- By setting up **lasting powers of attorney** you can rest assured that your finances and personal welfare are in safe hands.

**In association with Countrywide Tax & Trust Corporation Limited, I provide a professional, tailor-made service to help individuals to safeguard assets, regardless of their value and protect their loved ones.**

My decision to get involved in Wills and Estate Planning was a result of personal experience. I learnt first-hand how unpreparedness adds to the stress of dealing with long-term illness and death. Get in touch for advice that can guide you to make informed decisions that suit your needs.

**Visit [www.personalestateplanning.co.uk](http://www.personalestateplanning.co.uk) for further information.**

Judy Bonfanti, FCCA, STEP Affiliate

[judy.bonfanti@hotmail.com](mailto:judy.bonfanti@hotmail.com)

0781 0642 505



# Lawn Master®

professional lawn care

Your lawn, our expertise...  
*perfect!*

SEE RESULTS IN JUST  
**10 DAYS**

For a FREE quotation call  
Tel: 0800 326 5017  
[www.lawnmaster.co.uk](http://www.lawnmaster.co.uk)

Or just text 'lawn' and your postcode to 60777 and we will call you.

     
A Corporate Member      Certificate Number 8302 (2016)

 /LawnMasterUK  
 @LawnMasterUK  
 /LawnMasterTV

## CHURCH AND VILLAGE ACTIVITIES AND CONTACTS

### **Hambleden Valley Group of Churches**

**Priest-in-Charge:** The Revd. Sue Lepp,  
07930 520562, revdsuelepp@gmail.com

**Associate Priest:** The Revd Sue Morton,  
01491 639286, suemorton131@gmail.com

**Director of Music and Choir:**  
Christine Wells BEM, 01491 571588,  
c@wells.vnworks.net

**Group Treasurer:** David Napier, 01491  
574230, david\_napier@btoopenworld.com

**Group Administrator:** Jenny Neagle, 07769  
599616,  
hambledenvalleyoffice@gmail.com

**Weddings and Blessings:** Paul and Lynda  
Marston-Weston 01494 883188  
hambledenvalleyweddings@gmail.com

**Tea Club:** St. Katharine's, Parmoor,  
Currently suspended

**Barney's Toddler Group:** Frieth Village Hall,  
Currently suspended

**Website:**  
www.hambleden-valley-churches.org.uk

### **Fawley (St Mary the Virgin)**

**Churchwarden:** David Napier,  
01491 574230,  
david\_napier@btoopenworld.com

**Clerk to Fawley Parish Meeting and  
Village Hall booking:**  
David Burton - davidburtn83@hotmail.co.uk

### **Fingest (St Bartholomew)**

**Churchwardens:**  
Brian Barnes, 01494 882613,  
brianbarnes346@gmail.com  
Jill Dean, 01491 638678,  
jill@sundawn.uk.com

### **Frieth (St John the Evangelist)**

**Churchwarden:** Judy Hunt, 01494 882227,  
ajh.claypit1@btinternet.com

**Village Hall Bookings:**  
website www.friethvillagehall.org  
email friethvillagehall@gmail.com  
Tel 01494 880737

### **Frieth Natural History Society:**

Alan Gudge, 01494 881464

**Frieth Village Society:** Caroline Walker  
01494 882333

### **Frieth Cricket Club:**

Ben Smiley  
friethcricket@btinternet.com

**Frieth Lunch Club:** meets on last  
Friday of the month at the Yew Tree Pub.  
Judy Hunt, 01494 882227  
ajh.claypit1@btinternet.com

**Pilates:** Mondays at 2pm - 3pm. Wednesdays  
at 2pm - 3pm. Lauren Owen  
www.pilat-ease.co.uk

### **Hambleden (St Mary the Virgin)**

#### **Churchwarden:**

Jill Steward 01491 571320  
jillsteward@hambleden.com

**Bell Ringing:** Fri 7.45pm practice, Helen or  
Karen, hambledenbells@mycomputer.email

**Village Hall Bookings:** Jamie Baker,  
01491 410669, www.hambledenvillagehall.org

#### **Women's Institute:**

Sarah Williams, 07817 120339

**Pilates:** Mondays 11 – 12 Fran Presho,  
07951 019594

**Bridge Club:** Fridays 1.30 – 4.30  
Frances Cugnoni, 01491 576409

**Hambleden Social and Sports Club:** Open  
daily from 8 pm Pat Eldridge,  
01491 576067

**Tennis Club:** Heather Symons,  
01491 577344, heathersymons16@hotmail.com

**Tennis Coaching:** Chris Marshall,  
07801 999230, chrismarshall20@hotmail.com

**Yoga:** Monday 7pm-8.30pm  
Debbie Flavell, 01491 414403,  
debbby@debbbyflavell.com

**Indoor Market:** Hambleden, 2nd Saturday in  
Month (except January) **Circle Dance** Thurs-  
day 7pm – 8.30pm  
Debbie Flavell 01491 414403  
debbby@debbbyflavell.com

## **Medmenham (St Peter and St Paul)**

### **Churchwarden:**

Vacant. Please contact Rev. Sue Lepp, 07930 520562, revsuelepp@gmail.com

**Village Hall Bookings:** Emma Tentori, 07759 014396

### **Uniformed organisations:**

#### **1st Danesfield Scouts, Cubs and**

**Beavers:** leader Nick Currie, enquiries@danefeldscouts.org.uk

### **Medmenham News:**

medmenhamnews@icloud.com

## **Skirmett**

**Village Hall Bookings:** Mandy Heller, 01491 638355 www.skirmettvillagehall.org

**Tai Chi:** Friday 9.30am - 10.30am. Contact: junekingsburytaichi@gmail.com

**Hambleden Valley Garden Club:** Meetings Oct-Mar on first Tuesday each month at Skirmett Village Hall 7.30. Contact Celia Warren, 01491 638691.

## **Turville (St Mary the Virgin)**

### **Church Warden:**

Caroline Sants, 01491 638994 turvillechurchwardens@gmail.com

### **Deputy Churchwarden:**

Vicky Hollier vickyhollier@aol.com

**Bell Ringing:** Wed practice, Rachel Wallace, 01494 883025 rachel@markjwallace.com

### **Pilat-ease Reformer and Matwork Studio.**

Privates & semi-private Pilates classes (weekdays). Lauren Owen www.pilat-ease.co.uk

**Sunday School:** Sara Harman, 01491 639211

**Artists' studios:** Turville Studios open the first Sunday of every month 11am-4pm. Angela Fois turvillestudios@aol.com www.turvillestudios.co.uk

## **Turville Northend**

### **Village Hall Bookings:**

David & Susan Faragher 01491 638960 or 07563 903678, davidfaragher@fastmail.fm smfaragher@fastmail.fm

**Yoga:** Saturday 8.45-9.45am, Tiffany 07785 615583

## **Parish Council Contacts**

**Hambleden:** Parish Clerk Lorna Coldwell 01494 881483, clerk@hambleden.org.uk, www.hambleden.org.uk

**Medmenham:** Parish Clerk Carole Burslem 01494 449215, mpc.clerk@gmail.com

**Turville:** Parish Clerk Lorna Coldwell, 01494 881483, turvilleparishcouncil@gmail.com, www.turvilleparishcouncil.org.uk

**Fawley:** Clerk to Fawley Parish Meeting Mr Ross McDonald, 07769 971252 r.mcdonald2007@yahoo.co.uk

## **Magazine details**

**Editor:** Penny McLeish, 01491 571288, hambledenvalleeditor@gmail.com

**New subscriptions:** Penny McLeish, 01491 571288, penny\_mcleish@hotmail.com

**Advertising Manager:** David Napier, 01491 574230, david\_napier@btopenworld.com

## **Distributors:**

Fawley: Hilary Beck-Burridge, 01491 413171; Fingest: Brian Barnes, 01494 882613; Frieth: Tony Parkins, 01494 882170; Hambleden: Samantha Webb, 01491 414418; Medmenham: Jim Tilbury, 01628 487135; Mill End: Robert Spicer, 01491 577747; Northend: Susie Phillips, 01491639584; Elizabeth Arnott, 01491 638337, Sarah Evans, 01491 639240; Pheasants Hill: Kate Hussey, 01491 576913; Skirmett: Bessie Webb, 01491 638574; Southend: Valmai Pickett 01491 638523; Turville: Christine Massey, 01491 638679; Woodend: Helen Balkwell, 01628 471403.  
**Postal Distributor:** Stephen Sidders, 01491 639271 stephensidders@sky.com



# ROWLANDSCAPES

## CREATIVE LANDSCAPE GARDENING

- Patios & paths • Brickwork • Planting & hedging
- Fencing • Driveways • Wildflower meadows
- Lawns • Garden maintenance • Tree surgery
- Woodland management • Agricultural fencing

**Telephone:** 01844 351919 **Mobile:** 07718 257104

**Email:** rowlandscapes@googlemail.com **Website:** www.rowlandscapes.com

Telephone  
01491 574644



Established  
1906

FAMILY RUN INDEPENDENT MEMORIAL MASONS

36 READING ROAD, HENLEY ON THAMES, RG9 1AG

[www.etsheppard.co.uk](http://www.etsheppard.co.uk) [info@etsheppard.co.uk](mailto:info@etsheppard.co.uk)

Private Car Parking

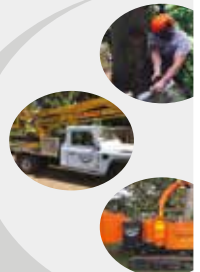
City & Guilds  
NPTC

# TWIGGER TREES



## TOTAL TREE CARE and FOREST MANAGEMENT

- Arboricultural tree climbing
- Dangerous tree removal
- Woodland thinning
- Directional winch felling
- Building site tree clearance
- Eco friendly material disposal
- NPTC qualified and Fully insured
- Competitive pricing with free quotations
- 24/7 EMERGENCY CALL OUT



**T** 07951 274 259 **E** [troy@twiggertrees.co.uk](mailto:troy@twiggertrees.co.uk)

# Peter Freebody & Co

BOATBUILDERS OF THE THAMES EST<sup>®</sup> OVER 300 YEARS



BOATBUILDERS • RESTORERS • BROKERS

TELEPHONE: 01628 824382 WWW.PETERFREEBODY.COM  
THAMES BOATHOUSES, MILL LANE, HURLEY, BERKSHIRE, SL6 5ND



## Your local experts

If you are thinking of selling your home, or would like some advice on the current market in the Hambleden Valley, please contact the Henley office.

Nick Warner  
Office Head, Partner  
nick.warner@knightfrank.com

Matt Davies  
Partner  
matt.davies@knightfrank.com

Knight Frank Henley  
20 Thameside, Henley-on-Thames  
RG9 2LJ, United Kingdom  
01491 818416  
henley@knightfrank.com

[knightfrank.co.uk](http://knightfrank.co.uk)



Advice you  
can trust,  
experience you  
can depend on.

Local people, looking after Local people.

Tel: 01491 411066

[sales@timpeers.com](mailto:sales@timpeers.com) | [lettings@timpeers.com](mailto:lettings@timpeers.com)

Tim Peers Estate Agents | 19 Duke Street  
Henley-on-Thames | Oxfordshire | RG9 1UR



[www.timpeers.com](http://www.timpeers.com)